

## Qualitative filter paper

### 2. General-purpose qualitative filter paper

These general-purpose filters have a high wet strengthened.

They are made of high-purity cotton linters and other virgin fibers. These filter papers have either fast or very fast filtration rates, and are particularly useful in filtering coarse precipitates or relatively straightforward substances.

#### **DME93 GRADE - Very fast filtration**

Smooth Grade DME93 is a general-purpose filter paper for qualitative analysis.

This wet strengthened paper is used for general filtration and sample preparation for food, sugar processing plants, hospitals, educational and research centres, colleges, universities and labs (with a very high usage and less critical analysis), etc.

#### **DXF55 GRADE - Very fast filtration**

General-purpose filter paper, smooth and similar to DME93 with less weight.

#### **DXF13 GRADE - Extra-fast filtration. Thick**

High particle retention and extremely high loading capacity.

Preferably used for filtration of gelatine, resin solutions and other viscous liquids, such as syrups, oils, essences and fats.

The folded format enables bigger volumes to be dealt at atmospheric pressures.

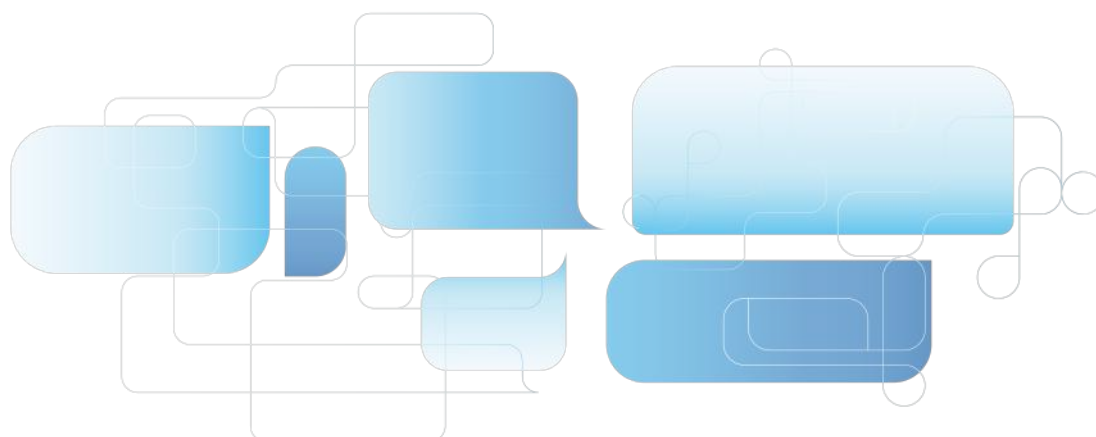
#### **DME91 GRADE - Very fast filtration. Crêped**

Crêped surface filter paper with a very fast flow rate.

For general laboratory use in less-critical analyses.

Used around the world in laboratories to assay sugar cane or beet. The fruit is mashed and further analyzed according to the aluminium sulphur method.

Grade	Applications
<b>DME93</b>	General filtration and sample preparation in different kind of laboratories General filtration and sample preparation in food and sugar processing plants
<b>DXF55</b>	General-purpose filtration
<b>DXF13</b>	Filtration of gelatines, resin solutions and other viscous liquids such as syrups, dense oils, essences and fats
<b>DME91</b>	Determination of sucrose in the sugar cane or beet



# Disc and Sheet Membranes

## Technical Specifications

GVS	Filtration Speed	Weight (g/m <sup>2</sup> )	Thickness (μm)	Retention Range (μm)	Ash Content (%)
DME93	Very Fast	80	170	43-48	<0.1
DXF55	Very Fast	65	145	6-9	<0.1
DXF13	Extra-Fast/Thick	160	470	60-68	<0.1
DME91	Very Fast/Crêped	65	160	34-42	<0.1

## Ordering information

Diameter(mm)	DME93	DXF55	DXF13	DME91
100 Circles/Box				
42.5	FP042DME93QALC01	-	-	FP042DME91QALC01
47	FP047DME93QALC01	-	-	FP047DME91QALC01
55	FP055DME93QALC01	-	-	FP055DME91QALC01
70	FP070DME93QALC01	-	-	FP070DME91QALC01
90	FP090DME93QALC01	-	-	FP090DME91QALC01
110	FP110DME93QALC01	FP110DXF55CREC01	-	FP110DME91QALC01
125	FP125DME93QALC01	FP125DXF55CREC01	-	FP125DME91QALC01
130	-	FP130DXF55CREC01	-	-
150	FP150DME93QALC01	FP150DXF55CREC01	-	FP150DME91QALC01
185	FP185DME93QALC01	FP185DXF55CREC01	-	FP185DME91QALC01
200	-	FP200DXF55CREC01	-	-
240	FP240DME93QALC01	FP240DXF55CREC01	FP240DXF13QALC0F	FP240DME91QALC01
250	-	FP250DXF55CREC01	-	-
270	-	FP270DXF55CREC01	-	-
300	-	FP300DXF55CREC01	-	-
320	FP320DME93QALC01	FP320DXF55CREC01	-	FP320DME91QALC01

Note: for folded format or other sizes packaging, please contact local representatives.

## Equivalence Table

GVS	Filtration Speed	Equivalent 1	Equivalent 2	Equivalent 3	Equivalent 4
DME93	Very fast	93	860	617	4b
DXF55	Very fast	-	-	-	3m/N
DXF13	Extra-fast/Thick	-	3144L	-	-
DME91	Very fast/Crêped	91	0856	-	601/N

