

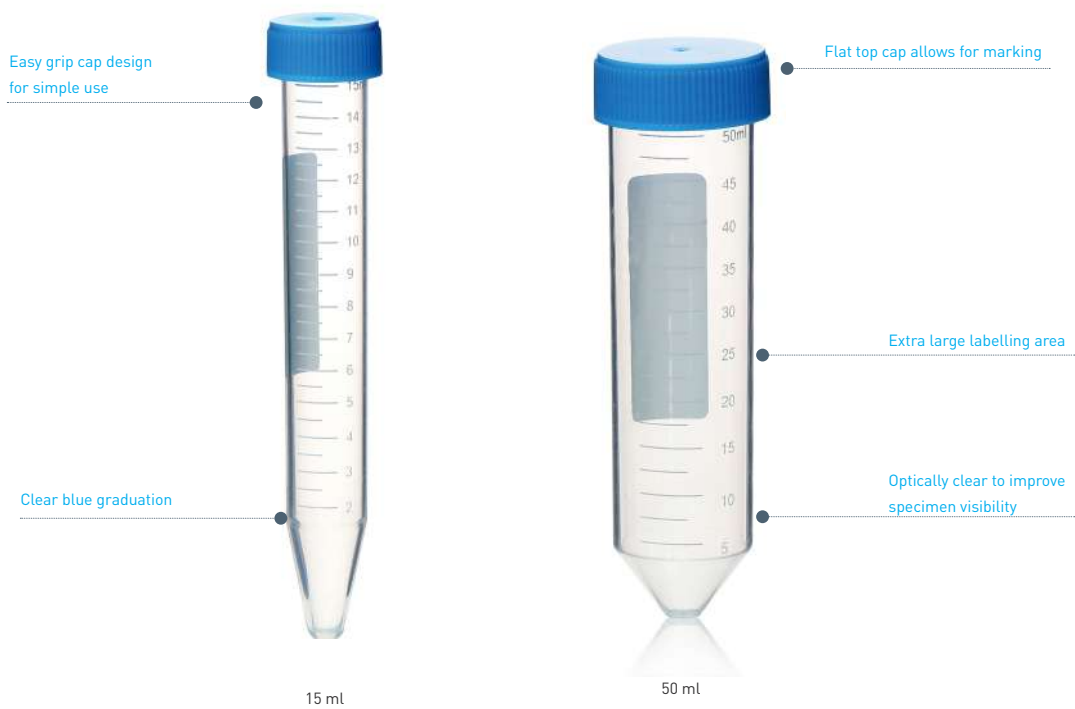
Centrifuge Tube



Intended for daily preparation, centrifugation, transportation, storage of solid and liquid specimens or reagents.

Features

- Consistent biological and physical properties, High transparent, medical grade PP material with flat caps for marking.
- RCF rating up to 12,000 xg.
- Easy-to-read printed graduations and a large white frosted area for labelling.
- Leak-proof.
- Packed in convenient durable racks or reusable Zip-lock bags.



15 ml DIM. 17x120 mm, Printed graduation range from 1.5 to 15 ml, interval at 0.5 ml

Product Code	Sterile	Packing
CELCUCG4610X1921S	Gamma	25 pcs/rack, 500 pcs/carton
CELCUCG4610X1922S	Gamma	50 pcs/zip-lock bag, 500 pcs/carton
CELCUCG4610X1923NS	Non sterile	50 pcs/zip-lock bag, 500 pcs/carton
CELCUCG4610X1924S	E.O.	1 pc/pack, 50 pcs/box, 500 pcs/carton

50 ml DIM. 30x115 mm, Printed graduation range from 5 to 47.5 ml, interval at 2.5 ml

Product Code	Sterile	Packing
CELCUCG4610X1940S	Gamma	25 pcs/rack, 300 pcs/carton
CELCUCG4610X1941S	Gamma	25 pcs/zip-lock bag, 500 pcs/carton
CELCUCG4610X1942NS	Non sterile	25 pcs/zip-lock bag, 500 pcs/carton
CELCUCG4610X1943S	E.O.	1 pc/pack, 50 pcs/box, 500 pcs/carton



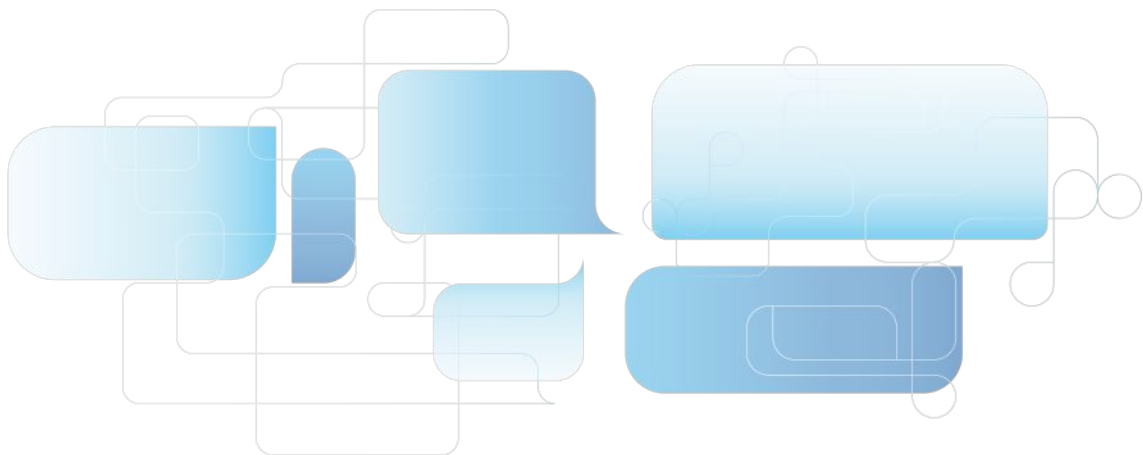
Zip-lock bag

50 ml Self-standing, DIM. 30x117 mm, Printed graduation range from 5 to 47.5 ml, interval at 2.5 ml

Product Code	Sterile	Packing
CELCUCG4610X1981S	Gamma	25pcs/zip-lock bag,500pcs/carton
CELCUCG4610X1982NS	Non sterile	25pcs/zip-lock bag,500pcs/carton
CELCUCG4610X1983NS2	Non sterile	50pcs/bag,500pcs/carton
CELCUCG4610X1984S02	E.O.	1pc/pack,50pcs/box,500pcs/carton

50 ml Self-standing, DIM. 30x107 mm, Green cap, Printed graduation range from 5 to 50 ml, interval at 5 ml

Product Code	Sterile	Packing
CELCUCG4610X1940S	Gamma	25 pcs/rack, 300 pcs/carton
CELCUCG4610X1941S	Gamma	25 pcs/zip-lock bag, 500 pcs/carton
CELCUCG4610X1942NS	Non sterile	25 pcs/zip-lock bag, 500 pcs/carton
CELCUCG4610X1943S	E.O.	1 pc/pack, 50 pcs/box, 500 pcs/carton



Metal-Free Centrifuge Tubes

The metal-free centrifuge tubes are made of transparent polypropylene (PP). They have been specially treated to ensure that more than 30 kinds of trace metal elements that can interfere with experiments are kept at levels of less than 1ppb (ICP-MS method). They are ideal for a variety of environmental tests such as water analysis, and other applications where samples may be contaminated by heavy metals in centrifuge tubes.



Features

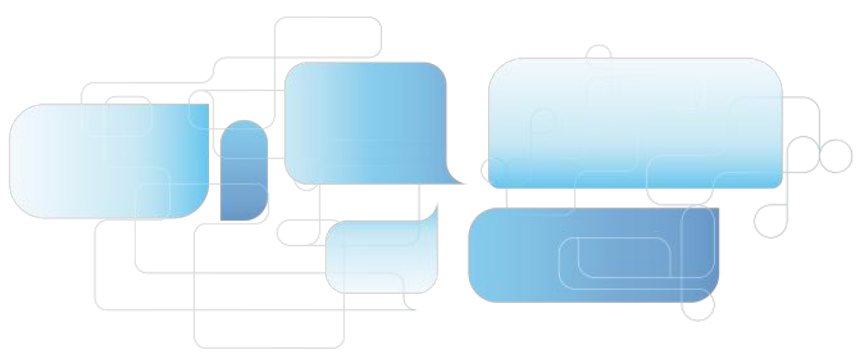
- Specification: 15 mL 50 mL
- Cap Type: Flat
- Bottom Type: Conical
- Packaging: Re-sealable Bag Paper Rack Bulk

Materials

- Tube Body: Polypropylene (PP),
- Tube Cap: High-density polyethylene (HDPE), conforming to USP Class VI standards

Ordering information

Product Code	Capacity (mL)	Bottom	Sterile	Maximum RCF (xg)	Package	Qty. Per Bag (Rack, Bulk)	Qty. Per Case
CELCUJGMFCT0150A	15	Conical	Y	12,500	Re-sealable bag	25	500
CELCUJGMFCT1150A	15	Conical	Y	12,500	Paper rack	50	500
CELCUJGMFCT2150A	15	Conical	Y	12,500	Bulk	500	500
CELCUJGMFCT0500A	50	Conical	Y	12,500	Re-sealable bag	25	500
CELCUJGMFCT1500A	50	Conical	Y	12,500	Paper rack	25	500
CELCUJGMFCT2500A	50	Conical	Y	12,500	Bulk	500	500



15 ml Centrifuge Tubes with Puncture Hole

These products are made of high-quality transparent polymer polypropylene (PP); the cap features a butyl rubber stopper for connecting to a syringe.



Features

- Specification: 15 mL
- Bottom Type: Conical
- Materials: Tube body: Polypropylene (PP), Tube cover: High-density polyethylene (HDPE), conforming to USP Class VI standards

Ordering information

Product Number	Volume (mL)	Bottom	Sterile	Max Rotational Speed (×g)	Description	Package	Qty. Per Bag	Qty. Per Case
CELCUJG013150BDA	15	Conical	Y	12500	Cap: 100/bag Tube: 25/bag	Re-sealable bag	Cap:100 Tube:25	Cap:500 Tube:500

