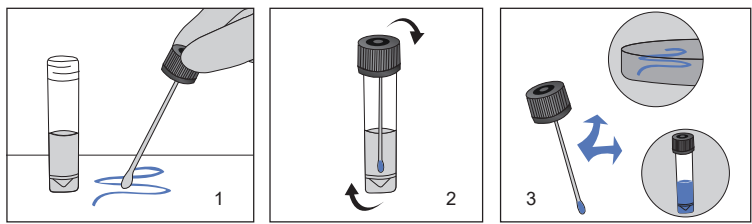


Environmental Surface Collection

Effective sampling of surfaces requires moisture, either already present on the surface to be sampled or via moistened swabs, sponges, wipes, agar surfaces, or membrane filters. GVS provides dilution fluids and rinse fluids include various buffers or general-purpose broth media, for environmental sampling applied in the food, pharmaceutical, biotechnology and cosmetic industries.

Available in 10mL fill volumes, with high-quality foam swab. The swab can be securely attached to the cap and makes a convenient “handle” for great control when sampling.

Convenient Use



- 1.Pre-moistening the tip of swab withbroth and then collecting sample by rubbing.
- 2.Returning the swab head to the broth after swabbing each area.
- 3.Shaking the tube vigorously, then plating the sample into the appropriate media and culturing for analysis.



Note: This product is For Laboratory Use only. It is not intended for use in the diagnosis of disease or other conditions.  
Packing: 50tubes/rack/inner box, 8x50tubes/case

Neutralizing solution

Neutralizing solution is recommended for detection of microorganisms found on dairy and food equipment disinfected with chlorine or quaternary ammonium compounds.The medium usually contains lecithin, polysorbate 80, and sodium thiosulphate, which is used for neutralizing antibacterial or anti-microbial cleansing agents on surfaces in order to paint a clear picture of any bacteria present.

Neutralizing Solution (PBS)

Product Code	Tube	VOL.	Swab
ESCKC2118X1601A	10ml	10ml	1 separate regular foam swab
ESCKC2118X1651A	10ml	10ml	1 regular foam swab attached cap in tube

Neutralizing Solution (Saline Solution)

Product Code	Tube	VOL.	Swab
ESCKC2118X1602A	10ml	10ml	1 separate regular foam swab
ESCKC2118X1652A	10ml	10ml	1 regular foam swab attached cap in tube

Buffered Peptone Water

Buffered Peptone Water is a pre-enriched nonselective buffered solution. It allows for the repair of damaged cells and facilitates the recovery of target bacteria in samples for detection of salmonella in food and dairy plants.

Product Code	Tube	VOL.	Swab
ESCKC2118X1603A	10ml	10ml	1 separate regular foam swab
ESCKC2118X1653A	10ml	10ml	1 regular foam swab attached cap in tube



## Lethen Broth

Lethen Broth is recommended for use in qualitative procedures for testing quaternary ammonium compounds for antimicrobial activity. It is a growth medium supplied with neutralizing reagent, such as Lecithin neutralizes quaternary ammonium compounds and polysorbate 80 neutralizes phenolic disinfectants, hexachlorophene, and formalin.

Product Code	TUBE	VOL.	SWAB
ESCKC2118X1604A	10ml	10ml	1 separate regular foam swab
ESCKC2118X1654A	10ml	10ml	1 regular foam swab attached cap in tube

## Butterfield's Solution

Butterfield's Solution is a liquid medium recommended for use in qualitative procedure as a diluent in microbial limit testing of pharmaceutical products and in food testing. It was developed to provide a standardized medium for the preparation of sample dilutions, which eliminates the variations in pH associated with the use of distilled water.

Product Code	Tube	VOL.	Swab
ESCKC2118X1605A	10ml	10ml	1 separate regular foam swab
ESCKC2118X1655A	10ml	10ml	1 regular foam swab attached cap in tube

## D/E Neutralizing Broth

D/E Neutralizing Broth is a liquid medium recommended for use in qualitative procedures for environmental sampling where neutralization of the chemical is important to determine its bactericidal or bacteriostatic activity. This medium will neutralize a broad spectrum of antiseptic and disinfectant chemicals, including mercurial, iodine and chlorine preparations, quaternary ammonium compounds, phenolics, formaldehyde and glutaraldehyde. Growth is indicated by a color change from purple to yellow, and / or cloudiness.

Product Code	Tube	VOL.	Swab
ESCKC2118X1606A	10ml	10ml	1 separate regular foam swab
ESCKC2118X1656A	10ml	10ml	1 regular foam swab attached cap in tube

## Neutralizing Buffered Peptone Water

Neutralizing Buffered Peptone Water is recommended for use in the recovery of injured *Salmonella* species from industrial samples prior to selective enrichment and isolation, such as poultry rinses and food samples. It contains neutralizing agents to reduce the inhibitory effects of carryover from antimicrobial interventions.

Product Code	Tube	VOL.	Swab
ESCKC2118X1607A	10ml	10ml	1 separate regular foam swab
ESCKC2118X1657A	10ml	10ml	1 regular foam swab attached cap in tube

