

Centrifuge Filters - Centrex™



GVS centrifuge filters, Centrex, has various type of membranes and make able the end users to do a larger sample preparation, with a considerable reduction of contamination risk. Thanks to the GVS knowledge in filtration, using Centrex you can reduce the risk of cross contamination.

Characteristics

- Centrifugal filter units with various types of membrane filter
- Rapid and simple preparation of a large number of samples
- Ideal for automated systems and high-speed batch filtration with robots
- Considerably reduced contamination risk when working with radioactive biologically hazardous material
- Cross contamination avoided
- Receiver Tubes 1.5 or 5 mL
- Housing Material Polypropylene

Typical Applications

- 0.45 µm cellulose acetate membrane for the rapid elution of agarose gels
- Nylon 66 and cellulose acetate membranes for the removal of particles and microorganisms from HPLC samples
- Sample preparation for quality control
- Cellulose acetate and nitrocellulose membrane for rapid clearing and filtration of aqueous solutions

Ordering information

Membrane	Pore Size (µm)	Color	1.5 mL Sterile	1.5 mL non-Sterile	5 mL Sterile	5 mL non-Sterile
			50/pk	250/pk	50/pk	250/pk
Nylon 66	0.2	Brown	10467003	-	10467015	10467010
Nylon 66	0.45	Tan	10467007	10467002	10467021	10467012
Cellulose Acetate	0.2	Blue	10467004	10467009	10467013	-
Cellulose Acetate	0.45	White	10467006	10467011	10467017	-
Cellulose Acetate	0.8	Green	10467008	-	-	-
Nitrocellulose	0.2	Pink	10467001	-	-	-
Nitrocellulose	0.45	Rust	10467005	-	10467019	-

Centrifugal Filters



Description

Centrifugal Filters, With 50mL conical tube, PES membrane, Non-sterile.

Purpose

For the centrifugal concentration and purification of biological samples.

Materials

Cap/Sealing gasket: PE (Polyethylene) Color: White

Centrifuge tube: PP (Polypropylene)

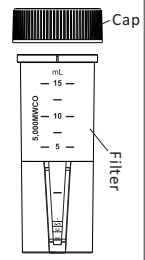
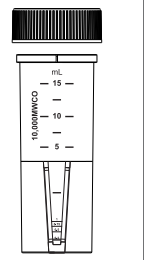
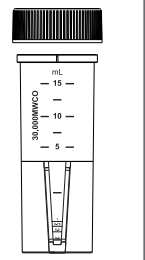
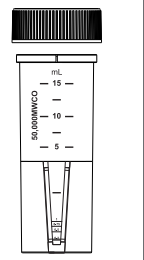
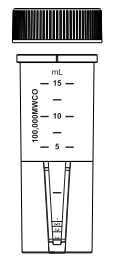
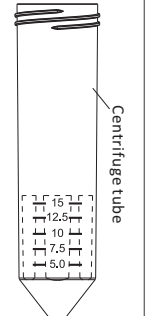
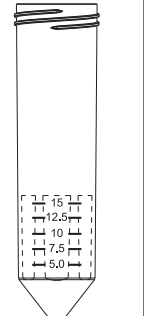
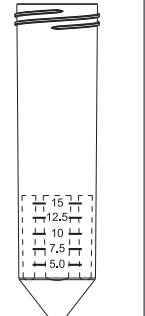
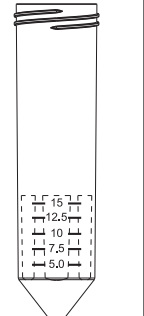
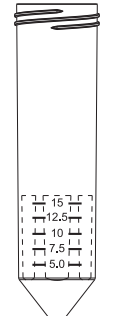
Filter: Filter slice (PE/Polyethylene)

Filter tube (MBS/Methyl methacrylate-Butadiene-Styrene);

Membrane: PES (Polyethersulfone)

Features

- Operating temperature range: 0°C - 40°C
- Available in multiple pore sizes with the following defined Molecular Weight Cut-Offs (MWCO): 5, 10, 30, 50 and 100 KD
- Maximum Sample Volume: 15.0 mL (Swinging bucket), 12.0 mL (Fixed angle rotor)
- Final Concentrate Volume: 200 μ L
- Fits centrifuges that accept standard 50 mL conical tubes
- Maximum Centrifugal Force: Swinging bucket rotor (3,000 x g), Fixed angle rotor (4,000 x g)
- Active membrane area: 9.7 cm²
- Provides high recoveries more than 80%
- The vertical design and available membrane surface area provide fast sample processing
- Features deadstop to prevent samples from spinning to dryness
- Manufactured in a class 100,000 room environment
- Manufactured under ISO13485 and ISO9001 quality management system

5 KD	10 KD	30 KD	50 KD	100 KD
				
				

Dimensions(Unit:mm)

Filter device in tube (capped)

Length: 119.5 mm Diameter: 33.7 mm

Filter device

Length: 72.5mm Diameter: 29.3 mm

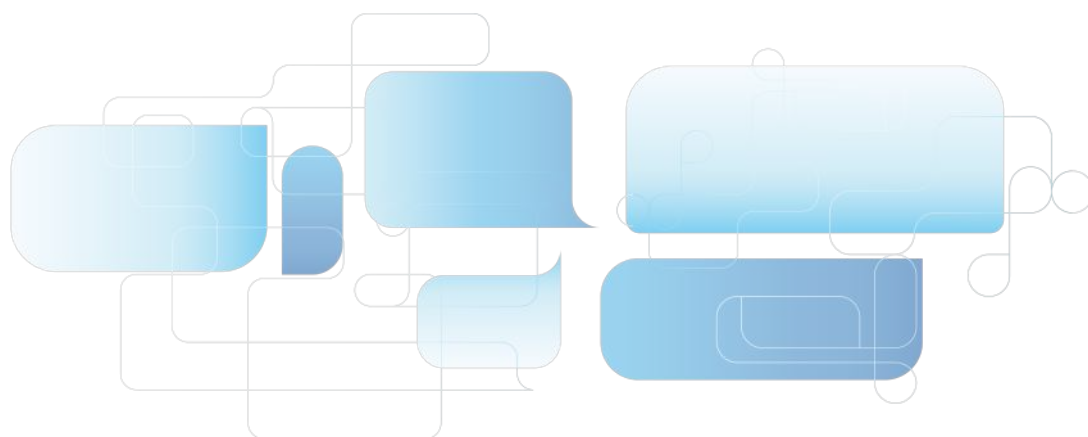
Sample Preparation

The membrane is not compatible with the following

- Acetic Acid ($\geq 25\%$)
- Acetonitrile ($\geq 30\%$)
- Aliphatic & aromatic esters
- Amines
- Ammonium hydroxide ($\geq 5\%$) Aromatic & chlorinated hydrocarbons Butyl acetate ($\geq 40\%$)
- Dimethyl acetamide (DMAC) ($\geq 30\%$)
- Ethers
- Hydrochloric acid (≥ 0.5 N at 50°C)
- Isopropyl Alcohol ($\geq 25\%$)
- Ketone
- Methylene chloride ($\geq 1\%$)
- Methyl ethyl ketone ($\geq 1\%$)
- Phosphoric acid (≥ 1 N)
- Sodium deoxycholate ($\geq 5\%$)
- Sodium hydroxide (≥ 0.5 N at 50°C) Sodium hypochlorite ($\geq 0.04\%$)
- Tetrahydrofuran ($\geq 5\%$)
- Toluene ($\geq 1\%$)

Ordering information

Product Code	MWCO	Sterilization	Quantity/Box	Quantity/Case
CEF50W005KD08120	5KD	No	8	96
CEF50W005KD24040	5KD	No	24	96
CEF50W010KD08120	10KD	No	8	96
CEF50W010KD24040	10KD	No	24	96
CEF50W030KD08120	30KD	No	8	96
CEF50W030KD24040	30KD	No	24	96
CEF50W050KD08120	50KD	No	8	96
CEF50W050KD24040	50KD	No	24	96
CEF50W100KD08120	100KD	No	8	96
CEF50W100KD24040	100KD	No	24	96



Centrifugal Filters



Description

Centrifugal Filters, With 15mL conical tube, PES membrane, Non-sterile

Purpose

For the centrifugal concentration and purification of biological samples

Materials

Cap/Sealing gasket: PE (Polyethylene) Color: White
Centrifuge tube: PP (Polypropylene)
Filter: MBS (Methyl methacrylate-Butadiene-Styrene)
Membrane: PES (Polyethersulfone)

Features

- Operating temperature range: 0°C - 40°C
- Available in multiple pore sizes with the following defined Molecular Weight Cut-Offs (MWCO): 5, 10, 30, 50 and 100 KD
- Maximum Sample Volume: 5.0 mL
- Final Concentrate Volume: 40-100 µL
- Fits centrifuges that accept standard 15 mL conical tubes
- Maximum Centrifugal Force: Swinging bucket rotor (3,000 x g), Fixed angle rotor (7,500 x g for 5, 10 KD; 5,000 x g for 30, 50, 100 KD)
- Active membrane area: 3.5 cm²
- Provides high recoveries more than 90%
- The vertical design and available membrane surface area provide fast sample processing
- Features deadstop to prevent samples from spinning to dryness
- Manufactured in a class 100,000 room environment
- Manufactured under ISO13485 and ISO9001 quality management system

5 KD	10 KD	30 KD	50 KD	100 KD

Dimensions(Unit:mm)

Filter device in tube (capped)

Length: 123.4 mm Diameter: 22mm

Filter device

Length: 68mm Diameter: 17.1 mm

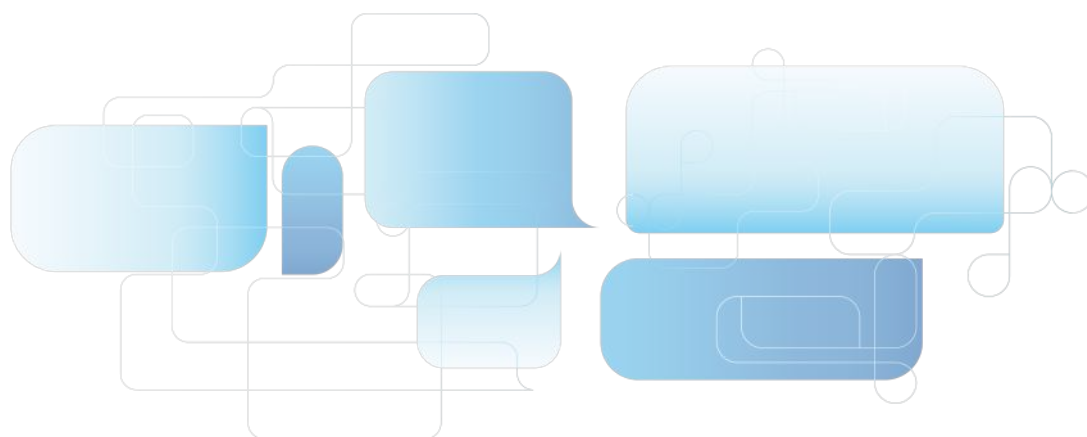
Sample Preparation

The membrane is not compatible with the following

- Acetic Acid ($\geq 25\%$)
- Acetonitrile ($\geq 30\%$)
- Aliphatic & aromatic esters
- Amines
- Ammonium hydroxide ($\geq 5\%$)
- Aromatic & chlorinated hydrocarbons
- Butyl acetate ($\geq 40\%$)
- Dimethyl acetamide (DMAC) ($\geq 30\%$)
- Ethers
- Hydrochloric acid (≥ 0.5 N at 50°C)
- Isopropyl Alcohol ($\geq 25\%$)
- Ketone
- Methylene chloride ($\geq 1\%$)
- Methyl ethyl ketone ($\geq 1\%$)
- Phosphoric acid (≥ 1 N)
- Sodium deoxycholate ($\geq 5\%$)
- Sodium hydroxide (≥ 0.5 N at 50°C)
- Sodium hypochlorite ($\geq 0.04\%$)
- Tetrahydrofuran ($\geq 5\%$)
- Toluene ($\geq 1\%$)

Ordering information

Product Code	MWCO	Sterilization	Quantity/Box	Quantity/Case
CEF15W005KD24040	5KD	No	24	96
CEF15W010KD24040	10KD	No	24	96
CEF15W030KD24040	30KD	No	24	96
CEF15W050KD24040	50KD	No	24	96
CEF15W100KD24040	100KD	No	24	96



Centrifugal Filters



Description

Centrifugal Filters, With 2.0mL micro centrifuge tube, PES membrane, Non-sterile

Purpose

For the centrifugal concentration and purification of biological samples

Materials

Micro centrifuge tube: PP (Polypropylene)
Filter: MBS (Methyl methacrylate-Butadiene-Styrene)
Membrane: PES (Polyethersulfone)

Features

- Operating temperature range: 0°C - 40°C
- Available in multiple pore sizes with the following defined Molecular Weight Cut-Offs (MWCO): 5, 10, 30, 50 and 100 KD Maximum
- Sample Volume: 500 μ L
- Final Concentrate Volume: 20 - 50 μ L
- Fits centrifuges that accept standard 2.0 mL conical tubes
- Maximum Centrifugal Force: Fixed angle rotor (7,500 x g)
- Active membrane area: 0.65 cm²
- Provides high recoveries more than 80%
- The vertical design and available membrane surface area provide fast sample processing
- Features deadstop to prevent samples from spinning to dryness
- Manufactured in a class 100,000 room environment
- Manufactured under ISO13485 and ISO9001 quality management system

Dimensions(Unit:mm)

Filter device in tube (capped)

Length: 48.1mm Diameter: 12.9mm

Filter device

Length: 30mm Diameter: 12.6mm

3 KD	5 KD	10 KD	30 KD	50 KD	100 KD

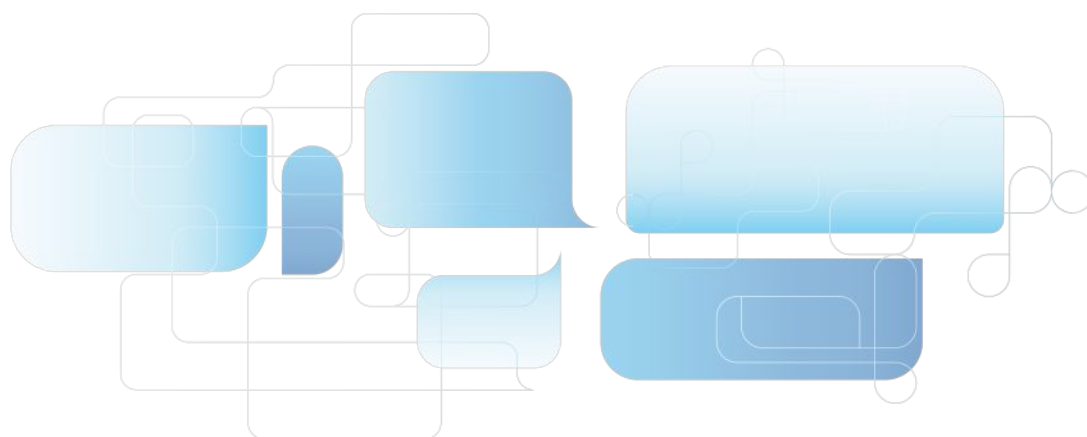
Sample Preparation

The membrane is not compatible with the following

- Acetic Acid ($\geq 25\%$)
- Acetonitrile ($\geq 30\%$)
- Aliphatic & aromatic esters
- Amines
- Ammonium hydroxide ($\geq 5\%$)
- Aromatic & chlorinated hydrocarbons
- Butyl acetate ($\geq 40\%$)
- Dimethyl acetamide (DMAC) ($\geq 30\%$)
- Ethers
- Hydrochloric acid (≥ 0.5 N at 50°C)
- Isopropyl Alcohol ($\geq 25\%$)
- Ketone
- Methylene chloride ($\geq 1\%$)
- Methyl ethyl ketone ($\geq 1\%$)
- Phosphoric acid (≥ 1 N)
- Sodium deoxycholate ($\geq 5\%$)
- Sodium hydroxide (≥ 0.5 N at 50°C)
- Sodium hypochlorite ($\geq 0.04\%$)
- Tetrahydrofuran ($\geq 5\%$)
- Toluene ($\geq 1\%$)

Ordering information

Product Code	MWCO	Sterilization	Quantity/Box	Quantity/Case
CEF02W005KD25120	5KD	No	25	300
CEF02W010KD25120	10KD	No	25	300
CEF02W030KD25120	30KD	No	25	300
CEF02W050KD25120	50KD	No	25	300
CEF02W100KD25120	100KD	No	25	300



Centrifugal Filters

Features

- Particularly designed for standard benchtop micro centrifuges
- Filter bacteria, particles and cells to prepare HPLC samples, and remove DNA from agarose or acrylamide gels



Ordering information

Product Code	Description	Qty.
MITBYCAH022A	2.0 mL Centrifugal Filters, hydrophilic CA, 0.22 µm	50 Sets/PK
MITBYPVDF022A	2.0 mL Centrifugal Filters, organic PVDF, 0.22 µm	50 Sets/PK
MITBZCAH022A	15 mL Centrifugal Filters, hydrophilic CA, 0.22 µm	50 Sets/PK
MITBZPVDF022A	15 mL Centrifugal Filters, organic PVDF, 0.22 µm	50 Sets/PK
MITBWCAH022A	50 mL Centrifugal Filters, hydrophilic CA, 0.22 µm	50 Sets/PK
MITBWPVDF022A	50 mL Centrifugal Filters, organic PVDF, 0.22 µm	50 Sets/PK
MITBYCAH045A	2.0 mL Centrifugal Filters, hydrophilic CA, 0.45 µm	50 Sets/PK
MITBYPVDF045A	2.0 mL Centrifugal Filters, organic PVDF, 0.45 µm	50 Sets/PK
MITBZCAH045A	15 mL Centrifugal Filters, hydrophilic CA, 0.45 µm	50 Sets/PK
MITBZPVDF045A	15 mL Centrifugal Filters, organic PVDF, 0.45 µm	50 Sets/PK
MITBWCAH045A	50 mL Centrifugal Filters, hydrophilic CA, 0.45 µm	50 Sets/PK
MITBWPVDF045A	50 mL Centrifugal Filters, organic PVDF, 0.45 µm	50 Sets/PK
MITBYMCE022A	2mL Centrifugal Filters, MCE, 0.22µm	50 Sets/PK
MITBYMCE045A	2mL Centrifugal Filters, MCE, 0.45µm	50 Sets/PK
MITBYNY022A	2mL Centrifugal Filters, Nylon, 0.22µm	50 Sets/PK
MITBYNY045A	2mL Centrifugal Filters, Nylon, 0.45µm	50 Sets/PK
MITBYPESH022A	2mL Centrifugal Filters, Hydrophilic PES, 0.22µm	50 Sets/PK
MITBYPTFE022A	2mL Centrifugal Filters, PTFE, 0.22µm	50 Sets/PK
MITBYPTFE045A	2mL Centrifugal Filters, PTFE, 0.45µm	50 Sets/PK
MITBYPTFEH022A	2mL Centrifugal Filters, Hydrophilic PTFE, 0.22µm	50 Sets/PK
MITBYPTFEH045A	2mL Centrifugal Filters, Hydrophilic PTFE, 0.45µm	50 Sets/PK
MITBYPVDFH022A	2mL Centrifugal Filters, Hydrophilic PVDF, 0.22µm	50 Sets/PK
MITBYPVDFH045A	2mL Centrifugal Filters, Hydrophilic PVDF, 0.45µm	50 Sets/PK
MITBYCAH022SA	2mL Centrifugal Filters, Hydrophilic CA, 0.22µm, sterile	50 Sets/PK
MITBYMCE022SA	2mL Centrifugal Filters, MCE, 0.22µm, sterile	50 Sets/PK
MITBYNY022SA	2mL Centrifugal Filters, Nylon, 0.22µm, sterile	50 Sets/PK
MITBYNY045SA	2mL Centrifugal Filters, Nylon, 0.45µm, sterile	50 Sets/PK
MITBYPVDF022SA	2mL Centrifugal Filters, PVDF, 0.22µm, sterile	50 Sets/PK
MITBYPTFEH022SA	2mL Centrifugal Filters, Hydrophilic PTFE, 0.22µm, sterile	50 Sets/PK
MITBYPTFEH045SA	2mL Centrifugal Filters, Hydrophilic PTFE, 0.45µm, sterile	50 Sets/PK
MITBZPESH022A	15mL Centrifugal Filters, Hydrophilic PES, 0.22µm	50 Sets/PK
MITBZPVDFH022A	15mL Centrifugal Filters, Hydrophilic PVDF, 0.22µm	50 Sets/PK
MITBZPVDFH045A	15mL Centrifugal Filters, Hydrophilic PVDF, 0.45µm	50 Sets/PK
MITBZCAH022SA	15mL Centrifugal Filters, Hydrophilic CA, 0.22µm, sterile	50 Sets/PK
MITBZPVDF022SA	15mL Centrifugal Filters, PVDF, 0.22µm, sterile	50 Sets/PK
MITBWMCE045A	50mL Centrifugal Filters, MCE, 0.45µm	50 Sets/PK
MITBWNL045A	50mL Centrifugal Filters, Nylon, 0.45µm	50 Sets/PK
MITBWPEH022A	50mL Centrifugal Filters, Hydrophilic PES, 0.22µm	50 Sets/PK
MITBWPTFEH022A	50mL Centrifugal Filters, Hydrophilic PTFE, 0.45µm	50 Sets/PK
MITBWPVDFH022A	50mL Centrifugal Filters, Hydrophilic PVDF, 0.22µm	50 Sets/PK
MITBWPVDFH045A	50mL Centrifugal Filters, Hydrophilic PVDF, 0.45µm	50 Sets/PK
MITBWPVDF022SA	50mL Centrifugal Filters, PVDF, 0.22µm, sterile	50 Sets/PK

Note: Please contact us for more specifications.