



# The GVS Group

In over 45 years of history, GVS has evolved from a supplier of components for the healthcare sector to a global group that produces highly technological diversified filtration solutions.

## Wide range of products and custom design expertise

GVS produces a wide range of filter materials, filters and off-the-shelf components in all its divisions, enabling its customers to reduce the design time for new product launches.

All the GVS divisions work in highly regulated environments and the Group therefore operates with extremely high-quality standards. Thanks to its research and development centres located all over the world, GVS is also able to offer an extremely efficient and personalized service to meet its customers' needs: from product conception and design to testing and mass production.

## Dynamic and flexible structure

GVS has developed a streamlined, dynamic and technologically advanced structure that has made it possible to achieve constant and balanced growth. The Group currently employs a total of 4869 people who work in automated assembly departments, in lines for the production and processing of filter membranes and in class 10,000 and 100,000 cleanrooms.

## Global growth

The GVS Group has always paid great attention to research, development and innovation of its products and processes and has shown a strong trend towards development in global markets since its foundation.

In addition to the corporate headquarters in Bologna, GVS currently has 19 plants in Italy, United Kingdom, Brazil, United States, China, Mexico, Romania e Puerto Rico, and 29 commercial offices located all over the world. GVS has always adopted a "glocal" approach: it operates locally in contact with its customers, but relies on the strength of a global network.

For more information, visit [www.gvs.com](http://www.gvs.com)



<b>Cell Culture Units .....</b>	<b>1</b>
Multi-layers Cell factory .....	2
Accessories of Cell Factory .....	4
Roller Bottle.....	5
High Efficiency Erlenmeyer Flask.....	6
Accessories of High Efficiency E-Flask .....	7
Conical Erlenmeyer Flask .....	8
Closed Sampling System .....	9
Baffled Erlenmeyer Flask.....	10
Cell Culture Flask.....	11
Multi-layer Cell Culture Flasks .....	13
Cell and Tissue Culture Products .....	14
Poly-D-Lysine-coated Products.....	16
Ultra-low Adsorption Surface.....	17
Mixing flask.....	19
Multi-well Cell Culture Plates.....	21
Cell Culture Dish.....	22
Glass Botton Dishes.....	23
Micro Centrifuge Tube .....	24
Centrifuge Tube .....	28
Tissue Culture Plate Inserts .....	32
Cell Strainer.....	34
Cell Scrapers .....	37
Cell Spreaders .....	38
Serological Pipette.....	39

Flake Microcarrier .....	41
Spherical Microcarrier.....	42
Square Media Bottle .....	43
Closed Sampling System .....	45
Carboy bottle.....	46
<b>General Labware.....</b>	<b>47</b>
Cryogenic Tube .....	48
Screw Cap Micro Tubes.....	50
Transport Tube.....	51
PCR Consumables Series .....	53
Cuvettes .....	57
Centrifuge Tube Stands .....	58
Freezing Box .....	59
Cryo Vial Rack.....	59
Cell Freezing Container .....	60
Cryogenic Storage Box .....	61
Ice Bucket .....	61
Freezing Box, Carboard .....	62
Box, with Exchange Holes.....	62
Centrifuge Tubes Rack .....	63
Plastic Pasteur Pipette .....	65
Collection Plates.....	72
Silicone Sealing Mats.....	73
Reagent Reservoirs .....	73
Sterile Sample Bags.....	74

# **CelluNova**

## **Cell Culture Units**

## Multi-layers Cell Factory

Multi-layers cell factory is the adherent cells' ideal choice for industrial mass production, laboratory operations, and large-scale cell cultures. Compared with other brands, GVS cell factory has good performance in culture.

- Polystyrene (PS) material meet USP VI medical grade. Combined with heat treatment process of injection molding, the toughness product is not easy to be damaged while transferring.
- Meanwhile, the product has undergone a three-level sealing test before delivery to ensure airtightness.
- The production processes in Class-C workshop to comply with ISO13485 by using professional automatic production line.
- With the perfect quality management system, each batch of products has been tested to ensure the consistency and stability of product performance between different batches.



## Multi-layers Cell Factory

- Double wild-mouth design improves the speed of filling and harvesting liquid, with hardly bubbles, Also conducive for gas exchange and high-density cell culture.
- Equipped with quick-fit seal cap (patented product), it can switch between airtight and breathable state in conventional environment (greenhouse) to meet the needs of dissolved oxygen and exhaust in different

culture stages of cells and viruses.

- The cell-factory is equipped with a complete set of sealed pipeline system, which can be connected with the liquid inlet and receiving system pipeline, and the liquid input and output are carried out by peristaltic pumps or pressure systems.

### Ordering information

TC treated seal cap							
Product Code	Layer	Culture area (cm <sup>2</sup> )	Length (mm)	Width (mm)	Height (mm)	pcs/pack	pcs/case
CELCUFG010001S	1	635	335	205.5	48	1	8
CELCUFG010002S	2	1270	335	205.5	65	1	8
CELCUFG010005S	5	3175	335	205.5	116	1	6
CELCUFG010010S	10	6350	335	205.5	201	1	4
CELCUFG010040S	40	25400	335	205.5	711	1	2

TC treated vent cap							
Product Code	Layer	Culture area (cm <sup>2</sup> )	Length (mm)	Width (mm)	Height (mm)	pcs/pack	pcs/case
CELCUFG011001S	1	635	335	205.5	48	1	8
CELCUFG011002S	2	1270	335	205.5	65	1	8
CELCUFG011005S	5	3175	335	205.5	116	1	6
CELCUFG011010S	10	6350	335	205.5	201	1	4
CELCUFG011040S	40	25400	335	205.5	711	1	2

Non-TC treated seal cap							
Product Code	Layer	Culture area (cm <sup>2</sup> )	Length (mm)	Width (mm)	Height (mm)	pcs/pack	pcs/case
CELCUFG012001S	1	-	335	205.5	48	1	8
CELCUFG012002S	2	-	335	205.5	65	1	8
CELCUFG012005S	5	-	335	205.5	116	1	6
CELCUFG012010S	10	-	335	205.5	201	1	4
CELCUFG012040S	40	-	335	205.5	711	1	2

Non-TC treated Vent cap							
Product Code	Layer	Culture area (cm <sup>2</sup> )	Length (mm)	Width (mm)	Height (mm)	pcs/pack	pcs/case
CELCUFG013001S	1	-	335	205.5	48	1	8
CELCUFG013002S	2	-	335	205.5	65	1	8
CELCUFG013005S	5	-	335	205.5	116	1	6
CELCUFG013010S	10	-	335	205.5	201	1	4
CELCUFG013040S	40	-	335	205.5	711	1	2



## Accessories of Cell Factory



<b>Product Code</b>	CELCUFGA0C1003S	CELCUFGA0C2004S	CELCUFGA0C0005S	CELCUFGA0C0006S
<b>Name</b>	Seal cap	Vent cap	Liquid transfer cap	Small mouth transfer cap
<b>Material</b>	pp	pp	pp	pp
<b>Irradiation</b>	Yes	Yes	Yes	Yes
<b>Package</b>	1 pcs/pack	1 pcs/pack	2 pcs/pack	2 pcs/pack



<b>Product Code</b>	CELCUFGA0C2007S	CELCUFGA0C2004S	CELCUFGA0C0005S	CELCUFGA0C0006S
<b>Name</b>	Plug	Big mouth airtransfer cap kit	Large mouth liquid transfer kit	Big mouth tee kit
<b>Irradiation</b>	Yes			
<b>Package</b>	2 pcs/pack	1 set/pack	1 set/pack	1 set/pack



<b>Product Code</b>	CELCUFGA010060S	CELCUFGA010120S	CELCUFGA010140S
<b>Name</b>	Small mouth air transfer cap kit	Small mouth liquid transfer cap kit	Small mouth tee kit
<b>Package</b>	2 pcs/pack	1 set/pack	1 set/pack



## Roller Bottle

Roller Bottle is a kind of disposable container which can meet the requirements of large-scale production of cells and tissues in both experimental and industrial production, and is widely used in the culture of animal and plant cells, bacteria, viruses and so on.

**Material:** polystyrene (PS) ,which meet USP VI medical grade.

- Vacuum plasma surface treatment technology, enhance cell adhesion ability, can also be coated with collagen on the inner surface according to customer requirements.
- cGMP standard production, each batch passes the performance test, perfect quality system from the source to ensure product quality and consistency.
- Sterile, no endotoxin, no heat source, no cytotoxicity.
- Injection, pull and blow molding process, the product bottle mouth is smooth and round, the contact sealing with the cap is better, and the product residue is less.
- 5L cell bottle adopts two-stage design to increase the contact area. The contact area between the roller bottle and the rotating bottle machine adopts the frosted structure to increase the friction coefficient of the roller bottle and reduce the sliding phenomenon.



### Ordering information

TC treated						
Product Code	Size	Culture area (ml)	Cap	Sterile	pcs/pack	pcs/case
CELCUFG023002S	2 (roller bottle-Rib type)	1700	Seal cap	Yes	2	40
CELCUFG022002S	2	850	Seal cap	Yes	2	40
CELCUFG022005S	5	1750	Seal cap	Yes	1	20

Non-TC treated						
Product Code	Size	Culture area (ml)	Cap	Sterile	pcs/pack	pcs/case
CELCUFG020002S	2	25%	Seal cap	Yes	2	40
CELCUFG020005S	5	25%	Seal cap	Yes	1	20

## High Efficiency Erlenmeyer Flask



**Material:** USPVI PETG material or Bisphenol A-free PC material.

**Specification:** 3L, 5L.

**Applications:** Widely used in microbiology, cell biology and other fields, can be used with large capacity culture shaker, mainly suitable for suspension cell culture.

### Features

- Adopts imported injection, pull and blow molding process.
- According to cGMP standard production, no direct contact, product consistency is good.
- The breathable film area of shaker cap is larger than that of similar products, increasing the breathable capacity, suitable for high-density cell culture, the working volume can be filled to 60%-80% of the total volume, and the cell yield is higher.
- The bottle neck designed with a natural arc, and the handle is designed in accordance with the ergonomic design, which is convenient to take the bottle and transfer the liquid.
- Equipped with 0.2 $\mu$ m barrier breathable membrane, optional liquid transfer cap, or customized bottle cap suitable for liquid transfer according to customer process requirements.
- The product has passed sterility testing, endotoxin testing, DNase free, RNase free.

### Ordering information

PC vent cap products						
Product Code	Spec	Height (mm)	Neck diameter (mm)	Bottom diameter (mm)	Working Volume (L)	pcs/case
CELCUFG043003S	3 L	245	70	163	1.12L-1.96L	12
CELCUFG043005S	5 L	281	90	230.26	2L-3.5L	4

## Accessories Of High Efficiency E-Flask



### Ordering Information of Efficient Transfer Cap

Product Code	Description	Min package	pcs/case
CELCUFGA010370S	Transfer cap (Silicone tube, needleless sampler)	1 set/pack	10
CELCUFGA010390S	Transfer cap (Silicone tube, needle sampler)	1 set/pack	10
CELCUFGA010410S	Transfer cap (Silicone tube, no sampling pipeline)	1 set/pack	10
CELCUFGA010430S	Transfer cap (Hot melt tube, needleless sampler)	1 set/pack	10
CELCUFGA010450S	Transfer cap (Hot melt tube, needle sampler)	1 set/pack	10
CELCUFGA010470S	Transfer cap (Hot melt tube, no sampling pipeline)	1 set/pack	10

### Ordering Information of Bi-Directional Transfer Cap

Product Code	Description	Min package	pcs/case
CELCUFGA010490S	Two-way transfer cap (Silicone tube)	1 pcs/pack	10
CELCUFGA010510S	Two-way transfer cap (Hot melt tube)	1 pcs/pack	10

### Ordering Information of Inverted Transfer Cap

Product Code	Description	Min package	pcs/case
CELCUFGA010530S	Inverted transfer cap (Silicone tube)	1pcs/pack	10
CELCUFGA010550S	Inverted transfer cap (Hot melt tube)	1pcs/pack	10

## Conical Erlenmeyer Flask



**Material:** USP VI PETG material or Bisphenol A-free PC material.

**Specification:** 125ml, 250ml, 500ml, 1000ml

**Application:** It is suitable for cell lines with high oxygen requirements. It is an economical cell culture tool that can be used to cultivate bacteria, fungi, animal and plant cells in suspension culture media, and can also be used for the preparation, mixing and storage of medium.

### Features

- According to c-GMP standard production, no personal contact, great consistency.
- The bottle cap using high-strength HDPE material and is designed with a PTFE hydrophobic and breathable membrane. After contact with liquid, it will not affect the sealing and ventilation effect of the breathable membrane.
- The scale is clear and accurate, which is convenient for observing the medium capacity.
- Aseptic packaging.

### Ordering information

PETG flask with vent cap						
Product Code	Spec	Height (mm)	Neck diameter (mm)	Bottom diameter (mm)	Working Volume (L)	pcs/case
CELCUFG031125S	125 ml	115.8	29.4	66	30	24
CELCUFG031250S	250 ml	140.8	39	83	60	12
CELCUFG031500S	500 ml	178.8	39	101	125	12
CELCUFG031001S	1000 ml	216.8	39	127	500	12

PETG flask with seal cap						
Product Code	Spec	Height (mm)	Neck diameter (mm)	Bottom diameter (mm)	Working Volume (L)	pcs/case
CELCUFG030125S	125 ml	115.8	29.4	66	30	24
CELCUFG030250S	250 ml	140.8	39	83	60	12
CELCUFG030500S	500 ml	178.8	39	101	125	12
CELCUFG030001S	1000 ml	216.8	39	127	500	12

PC flask with vent cap						
Product Code	Spec	Height (mm)	Neck diameter (mm)	Bottom diameter (mm)	Working Volume (L)	pcs/case
CELCUFG033125S	125 ml	115.8	29.4	66	30	24
CELCUFG033250S	250 ml	140.8	39	83	60	12
CELCUFG033500S	500 ml	178.8	39	101	125	12
CELCUFG033001S	1000 ml	216.8	39	127	500	12

PC flask with seal cap						
Product Code	Spec	Height (mm)	Neck diameter (mm)	Bottom diameter (mm)	Working Volume (L)	pcs/case
CELCUFG032125S	125 ml	115.8	29.4	66	30	24
CELCUFG032250S	250 ml	140.8	39	83	60	12
CELCUFG032500S	500 ml	178.8	39	101	125	12
CELCUFG032001S	1000 ml	216.8	39	127	500	12

## Closed Sampling System

- Equipped with hot melt tube or silicone tube.
- Equipped with MPC fitting or Luer fitting.
- A broad range of tubes brands can be chosen, length and diameter can be customized.
- Liquid transfer tube IN 1/4", OD 7/16



### Bottle with Two Ports Tubing

Product Code	Volume	pcs/pack	pcs/case	Sterile	Material
CELCUFG036250S	250	1	12	Irradiation sterilization	PC
CELCUFG036500S	500	1	12	Irradiation sterilization	PC
CELCUFG036001S	1000	1	12	Irradiation sterilization	PC



### Bottle with Three Ports Tubing

Product Code	Volume	pcs/pack	pcs/case	Sterile	Material
CELCUFG037250S	250	1	12	Irradiation sterilization	PC
CELCUFG037500S	500	1	12	Irradiation sterilization	PC
CELCUFG037001S	1000	1	12	Irradiation sterilization	PC

## Baffled Erlenmeyer Flask



**Material:** PC, comply with USP VI standard.

**Specification:** 125 ml, 250 ml, 500 ml, 1000 ml.

**Application:** Designed with baffles to increase fluid shear stress, reduce viscosity from cell-free DNA and cell debris. Provide effective agitation for more efficient aeration to increased oxygenation and mixing.

### Features

- According to c-GMP standard production, no personal contact, great consistency.
- The bottle cap using high-strength HDPE material and is designed with a PTFE hydrophobic and breathable membrane. After contact with liquid, it will not affect the sealing and ventilation effect of the breathable membrane.
- The scale is clear and accurate, which is convenient for observing the medium capacity.
- Aseptic packaging.

### Ordering information

PC Flask with Seal Cap							
Product Code	Spec	Height (mm)	Neck diameter (mm)	Bottom diameter (mm)	Working Volume (L)	pcs/pack	pcs/case
CELCUFG034125S	125 ml	115.8	29.4	66	30	1	24
CELCUFG034250S	250 ml	140.8	39	83	60	1	12
CELCUFG034500S	500 ml	178.8	39	101	125	1	12
CELCUFG034001S	1000 ml	216.8	39	127	500	1	12

PC Flask with Vent Cap							
Product Code	Spec	Height (mm)	Neck diameter (mm)	Bottom diameter (mm)	Working Volume (L)	pcs/pack	pcs/case
CELCUFG035125S	125 ml	115.8	29.4	66	30	1	24
CELCUFG035250S	250 ml	140.8	39	83	60	1	12
CELCUFG035500S	500 ml	178.8	39	101	125	1	12
CELCUFG035001S	1000 ml	216.8	39	127	500	1	12

## Cell Culture Flask



- According to different surface treatment processes, cell culture flasks can be divided into hydrophilic cell culture flask and hydrophobic cell culture flask.
- Under the same environment, the clone formation rate and growth generation of cells cultured in the cell culture flasks have reached the index of similar international products.
- High quality polystyrene (PS) materials, USP VI medical grade.
- Plasma surface treatment can maximize adhesion of cells. Culturing for 48h, Vero cell growing condition is good as international famous culture flask.
- Innovative angled neck design provides good pipette and cell scraper access.
- The whole production is in the C-class purification

workshop. According to ISO13485 quality system management and the use of automatic equipment production, no direct contact with personnel, good product consistency, and small differences between batches.

- Sterile, DNase-free, RNase-free, endotoxin content < 0.1 EU/mL.
- According to different culture requirements, there are vent cap and seal cap optional.
- Upgrade the flask angle and bottom arc design to easily obtain a complete growth surface and make subsequent operations easier.





## Cell Culture Flask

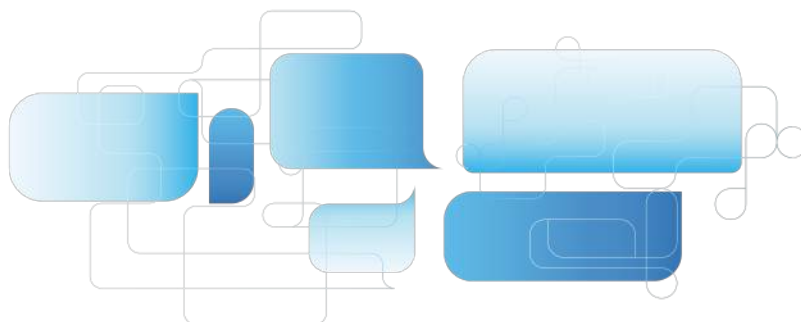
### Ordering information

TC Treated Flask with Seal Cap					
Product Code	Size	Culture area [cm <sup>2</sup> ]	Cap Type	pcs/pack	pcs/case
CELCUFG006025S	25 cm <sup>2</sup>	25	Seal cap	10	200
CELCUFG006075S	75 cm <sup>2</sup>	75	Seal cap	5	100
CELCUFG006175S	175 cm <sup>2</sup>	175	Seal cap	5	40
CELCUFG006225S	225 cm <sup>2</sup>	225	Seal cap	5	25

TC Treated Flask with Vent Cap					
Product Code	Size	Culture area [cm <sup>2</sup> ]	Cap Type	pcs/pack	pcs/case
CELCUFG004025S	25 cm <sup>2</sup>	25	Vent cap	10	200
CELCUFG004075S	75 cm <sup>2</sup>	75	Vent cap	5	100
CELCUFG004175S	175 cm <sup>2</sup>	175	Vent cap	5	40
CELCUFG004225S	225 cm <sup>2</sup>	225	Vent cap	5	25

Non-TC Treated Flask with Seal Cap					
Product Code	Size	Culture area [cm <sup>2</sup> ]	Cap Type	pcs/pack	pcs/case
CELCUFG007025S	25 cm <sup>2</sup>	-	Seal cap	10	200
CELCUFG007075S	75 cm <sup>2</sup>	-	Seal cap	5	100
CELCUFG007175S	175 cm <sup>2</sup>	-	Seal cap	5	40
CELCUFG007225S	225 cm <sup>2</sup>	-	Seal cap	5	25

Non-TC Treated Flask with Vent Cap					
Product Code	Size	Culture area [cm <sup>2</sup> ]	Cap Type	pcs/pack	pcs/case
CELCUFG005025S	25 cm <sup>2</sup>	-	Vent cap	10	200
CELCUFG005075S	75 cm <sup>2</sup>	-	Vent cap	5	100
CELCUFG005175S	175 cm <sup>2</sup>	-	Vent cap	5	40
CELCUFG005225S	225 cm <sup>2</sup>	-	Vent cap	5	25



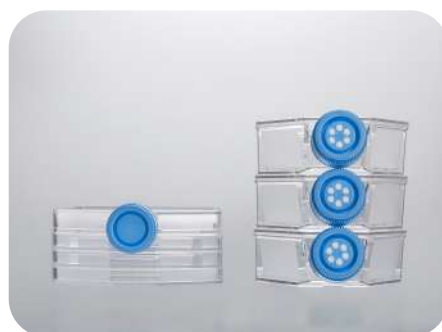
## Multi-layer Cell Culture Flasks

Multi-layer cell culture flasks 3-layers and 5-layers are available, which providing 525 cm<sup>2</sup> and 875 cm<sup>2</sup> cell growth surface area respectively, they are equivalent to 3 and 5 times the surface area of the T-175 culture flask. The higher-capacity design make cell culture faster, easier, and more efficient.

- Cap Type: Plug Seal Vent
- Surface: TC treated
- Flask Body: Polystyrene (PS)
- Flask Cap: High-density Polyethylene (HDPE)
- Filter Membrane: Polytetrafluoroethylene (PTFE)
- Conforming to USP Class VI standards



Five-layer flasks comparison



Three-layer flasks comparison



Vent Cap



Plug Seal Cap

### Feature

- The medium can be evenly distributed across each layer, providing a consistent culture environment for uniform cell growth
- The surface treatment of each layer is uniform and stable, effectively guaranteeing large-scale cell cultures
- Cells and reagents can be mixed directly in the flask, with no leakage or splash between layers, saving time and reducing the risk of contamination
- Suitable for 10mL serological pipets to liquid aspiration/replenishment or cells harvesting directly in the flask
- Every flask is printed lot No. for quality traceability
- Sterilized by irradiation, SAL 10<sup>-6</sup>
- DNase/RNase free, Non-pyrogenic, Non-cytotoxic

### Ordering information

Product Number	Layer	Surface	Cell Growth Area(cm <sup>2</sup> )	Type of Cap	Sterile	Qty Per Bag/Case
CELCUJGTCF011525S	3	TC treated	525	Plug Seal	Y	2/12
CELCUJGTCF012525S	3		525	Vent	Y	2/12
CELCUJGTCF011875S	5		875	Plug Seal	Y	1/8
CELCUJGTCF012875S	5		875	Vent	Y	1/8

## Cell and Tissue Culture Products

GVS superhydrophilic cell culture product series is created by introducing polar groups onto their surfaces. This forms a durable and stable superhydrophilic surface that facilitates good adherent growth of various types of cells under different culture conditions, thereby improving cell yield. The treated surface also eliminates the need for unstable, time-consuming, and costly biological coating.

- Cell and Tissue Culture Flasks: T12.5 T25 T75 T182 T225 T300
- Cap Style: Plug Seal Vent
- Cell and Tissue Culture Plates: 6-well 12-well 24-well 48-well 96-well
- Cell and Tissue Culture Dishes: 35 mm 60 mm 70 mm 90 mm 100 mm 150 mm
- Materials: Flask/Plate/Dish Body: Polystyrene (PS), Flask Cap: High-density Polyethylene (HDPE), Filter Membrane: Polytetrafluoroethylene (PTFE), conforming to USP Class VI standards

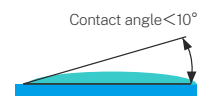
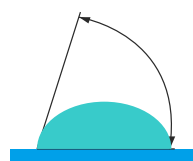
### Feature

- Unique superhydrophilic surface treatment technology provides better adherence for cells, promoting rapid cell growth and increasing yields.
- This ensures continuous and uniform cell adherence, and can be used for adherent cultures of primary cells, neuronal cells, stem cells and other fastidious cells that have more stringent requirements for the hydrophilicity of the culture surface.
- Cells can adapt quickly to a serum-free or low-serum culture environment, meeting the needs of experiments that require the elimination of interference by serum components or that require reduced serum levels, thus reducing the cost of cell culture.

Water droplets on ordinary surfaces are relatively full

Super hydrophilic

Contact angle  $<60^\circ$



### Ordering information of Tissue Culture Flasks

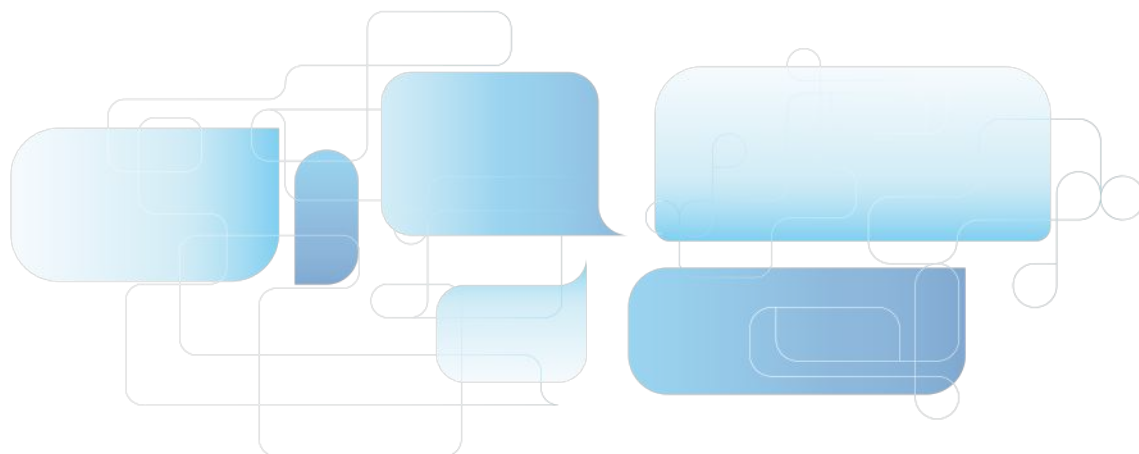
Product Number	Volume(mL)	Surface Type	Working Volume(mL)	Cap Style	Sterile	Qty. Per Pack	Qty. Per Case
CELCUJGF011025A	25	Surface Treated	12.5	Plug Seal	Y	10	200
CELCUJGF012025A	25		12.5	Vent	Y	10	200
CELCUJGF011050A	50		25	Plug Seal	Y	10	200
CELCUJGF012050A	50		25	Vent	Y	10	200
CELCUJGF011250A	250		75	Plug Seal	Y	5	100
CELCUJGF012250A	250		75	Vent	Y	5	100
CELCUJGF011600A	600		182	Plug Seal	Y	5	40
CELCUJGF012600A	600		182	Vent	Y	5	40
CELCUJGF111600A	600		182	Plug Seal	Y	5	40
CELCUJGF112600A	600		182	Vent	Y	5	40
CELCUJGF011850A	850		300	Plug Seal	Y	3	18
CELCUJGF012850A	850		300	Vent	Y	3	18

## Ordering information of Tissue Culture Plates

Product Number	Well Qty	Surface Type	Cell Growth Area(cm <sup>2</sup> )	Qty. Per Box	Qty. Per Case
CELCUJGP011006A	6	Surface Treated	9.6	1	100
CELCUJGP011012A	12		3.85	1	100
CELCUJGP011024A	24		1.93	1	100
CELCUJGP011048A	48		0.84	1	100
CELCUJGP011096A	96		0.33	1	100
CELCUJGP012096A	96U		0.58	1	100

## Ordering information of Cell and Tissue Culture Dishes

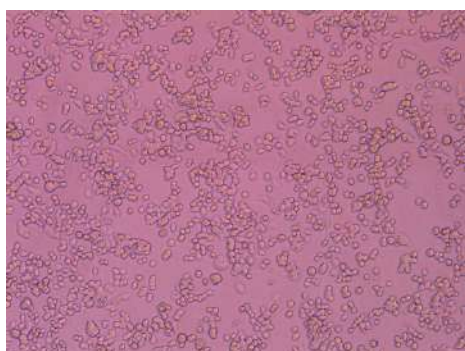
Product Number	Diameter(mm)	Surface Type	Cell Growth Area(cm <sup>2</sup> )	Sterile	Qty. Per Box	Qty. Per Case
CELCUJGD010035A	35	Surface Treated	8.5	Y	10	240
CELCUJGD010060A	60		21.2	Y	10	240
CELCUJGD010070A	70		36.3	Y	10	240
CELCUJGD010090A	90		55	Y	10	240
CELCUJGD010100A	100		60.8	Y	10	240
CELCUJGD010150A	150		143	Y	5	80



## Poly-D-Lysine-coated Products

Poly-D-Lysine serves as a positively charged extracellular matrix, fostering nonspecific cell attachment. Upon application to solid-phase culture surfaces, it heightens the electrostatic interaction between negatively charged ions on the cell membrane surface and positively charged ions on the culture surface. This enhancement bolsters cell attachment rates in serum-free or low-serum culture settings and reinforces the absorption of serum proteins and extracellular matrix proteins onto the culture surface.

GVS Poly-D-Lysine-coated Products are available in a variety of forms, including culture plates and dishes. The product surface is pre-coated with Poly-D-lysine, which facilitates the attachment growth, proliferation and differentiation of cells that are difficult to culture, such as neurons, glial cells and transfected cell lines.



Inoculate PC-12 cells onto a poly-D-lysine-coated 24-well cell culture plate at a density of  $5 \times 10^5$  cells/well. After 24 hours, observe under a microscope: The cell morphology appears normal, exhibiting an attachment rate surpassing 90% and the viability of attachment cells exceeding 95%.

### Specification:

- Poly-D-Lysine-coated culture plates (6-well, 12-well and 24-well)
- Poly-D-Lysine-coated culture dishes (35 mm, 60 mm and 90 mm)

### Features

- Utilizing premium poly-D-lysine characterized by a molecular weight ranging from 75 to 150 kDa, boasting high viscosity and robust cell attachment properties
- Enhance the attachment, growth, and specialization of challenging cell types, such as neurons, in culture
- Synthetic poly-D-lysine aims to prevent the stimulation of biological activity resulting from the introduction of natural polymers, impurity proteins, and similar factors
- Following validation through diverse cell culture tests, the attachment rate of cells surpasses 90%, with the viability of attachment cells exceeding 95%
- We offer a range of pre-coated poly-D-lysine product forms ready for use, catering to diverse testing requirements of our customers
- Lot number of each package bag is printed to ensure quality traceability
- Sterilized by irradiation, SAL10-6, DNase/RNase-free, and non-pyrogenic

### Ordering information

Product Number	Product Name	Specification	Surface	Sterile	Qty./Bag	Qty./Case
CELCUJGP040006A	Culture plate	6-well	Poly-D-lysine Coated	Y	1	60
CELCUJGP040012A	Culture plate	12-well	Poly-D-lysine Coated	Y	1	60
CELCUJGP040024A	Culture plate	24-well	Poly-D-lysine Coated	Y	1	60
CELCUJGD040035A	Culture dish	35mm	Poly-D-lysine Coated	Y	5	80
CELCUJGD040060A	Culture dish	60mm	Poly-D-lysine Coated	Y	5	80
CELCUJGD040090A	Culture dish	90mm	Poly-D-lysine Coated	Y	5	80

## Ultra-low Adsorption Surface

Enable cell spheroid culture in a rapid, consistent, and highly reproducible manner

Compared with the traditional two-dimensional (2D) culture model, the three-dimensional (3D) spheroid model can better simulate the three-dimensional cell networks, cell-matrix, and cell-cell interactions. Therefore, the 3D spheroid model is of great significance for drug screening, in vitro tumor research, and the exploration of stem cell differentiation and sorting.

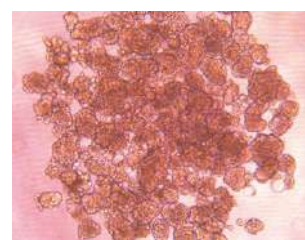
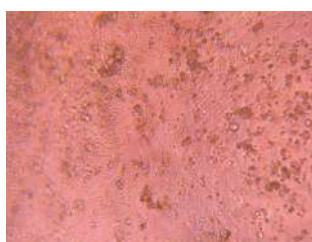
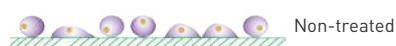
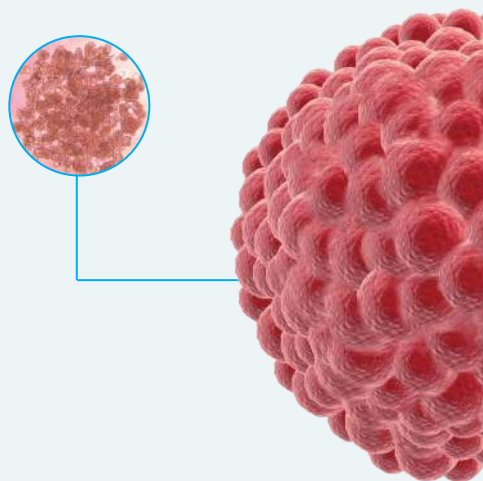
Ultra-low Adsorption Surface of GVS is designed for spheroids (e.g. 3D tumor spheroid) and organoid cultures, providing a variety of product forms such as culture plates, culture dishes, and culture flasks. After the surface of the product is subjected to special gel treatment, the product has extremely strong anti-protein adsorption and anti-cell attachment, and there is almost no cell attachment on the surface, which is conducive to the suspension growth of cells and enables cell spheroid culture in a rapid, consistent, and reproducible manner.



- Specification: Ultra-low adsorption cell and tissue culture plates (6 wells; 96 wells, flat bottom; 96 wells, U bottom)  
Ultra-low adsorption culture dishes (60 mm; 100 mm)  
Ultra-low adsorption culture flask T75
- Material: Polystyrene (PS), Flask cap: High-density polyethylene (HDPE), conforming to USP Class VI standards

### Features

- The Ultra-low Adsorption Surface has a covalently bonded hydrogel layer with extremely strong anti-protein adsorption and anti-cell attachment, which can effectively inhibit cell attachment and minimize protein adsorption, enzyme activation, and cell activation
- The surface is non-cytotoxic, biologically inert and non-degradable
- The coating on the surface is firm and convenient for daily experimental operation
- It has been verified by different cell culture tests that there is almost no cell attachment on the surface and enables cell spheroid culture in a rapid, reproducible, consistent, and reliable manner
- Provide a variety of Ultra-low Adsorption Surface to meet different experimental needs of customers
- Each package bag is printed with lot No. for quality traceability
- Sterilized by irradiation, SAL  $10^{-6}$ , DNase/RNase-free, non-pyrogenic, and non-cytotoxic



Cell Growth Status of MCF-7 Cells on Day 6 of untreated surface product (Left) and GVS Ultra-low Adsorption Surface (Right)

### Application

- Construction of 3D Tumor Spheroids and Embryoid Bodies
- Formation of Neurospheres
- Screening of Suspended Cells
- Studies on Stem Cells
- Studies on Cancer Cell
- .....

## Cell culture tests of different surface products GVS has better cell spheroid-forming performance

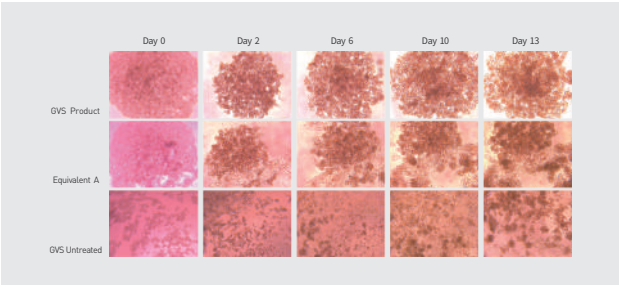


Figure1:Sphere-formation Assay

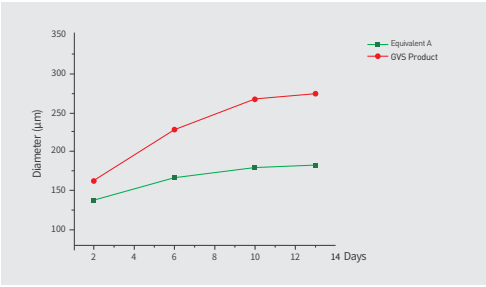


Figure 2: Cell Diameter Measurement after Spheroid-forming Culture

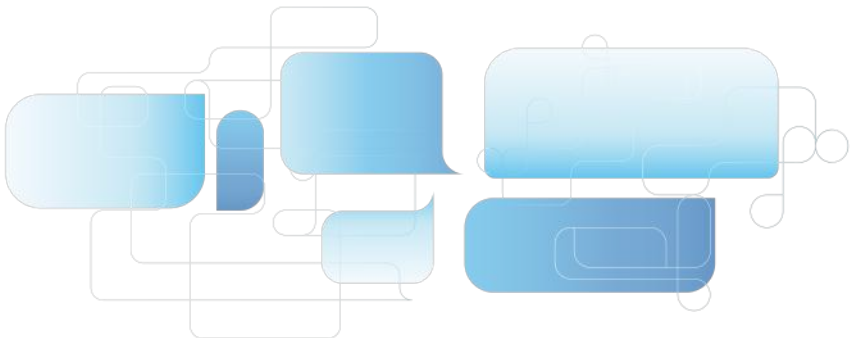
**Figure 1:** MCF-7 cells were seeded in U-bottom 96-well culture plates of different products at a seeding density of 5000 cells/well, and the growth status of the cells was observed regularly.

**Figure 2:** After the 13th day of cell culture, each well of each plate was photographed using a fluorescence microscope, and the length of the spheroid diameter was measured.

The results showed that compared with the similar imported products, the growth status of cells cultured on the surface of GVS was significantly better and the spheroid size was also larger when the cell culture time was not more than 13 days.

### Ordering information

Product Number	Product Name	Specification	Surface Type	Sterile	Qty. Per Bag/Case
CELCUJGP030006A	Culture plate	6-well	Ultra-low adsorption	Y	1/60
CELCUJGP030096A	Culture plate	96-well (flat bottom)	Ultra-low adsorption	Y	1/60
CELCUJGP130096A	Culture plate	96-well (U bottom)	Ultra-low adsorption	Y	1/60
CELCUJGD030060A	Culture dish	60 mm	Ultra-low adsorption	Y	5/80
CELCUJGD030100A	Culture dish	100mm	Ultra-low adsorption	Y	5/80
CELCUJGF030250A	Culture flask	T75 (250 mL, vent)	Ultra-low adsorption	Y	1/60





## Mixing culture flask for biological culture



### Features

- With magnetic coupling, suitable for culture in suspension cells or microcarriers
- Height adjustable blade and aseptic design, the mixing part is all in the flask
- Wide Mouth design facilitates gas exchange
- The borosilicate glass meets the USP I and ASTM E 438I standards, Class A requirements
- Autoclavable

Product code	Vlolume(ml)	Dia. x Height (mm)	Center neck	Side neck	MPQ
CELCUWG3023125A	125	65 x 155	51-400	33-430	1 pc
CELCUWG3023250A	250	85 x 175	51-400	33-430	1 pc
CELCUWG3023500A	500	110 x 190	100-400	45mm	1 pc
CELCUWG3023103A	1000	130 x 250	100-400	45mm	1 pc
CELCUWG3023303A	3000	178 x 341	100-400	45mm	1 pc

## Mixing culture flask for Microcarrier



### Features

- With simple and flexible coupling, suitable for culture in microcarriers
- Thanks to glass ball, it provides a very gentle mixing effect, reduces shear stress and protects cells
- Wide Mouth design facilitates gas exchange
- The borosilicate glass meets the USP I and ASTM E 438I standards, Class A requirements
- Autoclavable

Product code	Vlume(ml)	Dia. x Height (mm)	Center neck	Side neck	MPQ
CELCUWG3023225A	125	65 x 155	51-400	33-430	1 pc
CELCUWG3023350A	250	85 x 175	51-400	33-430	1 pc
CELCUWG3023600A	500	110 x 190	100-400	45mm	1 pc
CELCUWG3023203A	1000	130 x 250	100-400	45mm	1 pc
CELCUWG3023403A	3000	178 x 341	100-400	45mm	1 pc

## Accessories and spare parts

### Stirring kit with PTFE paddle blades



Product code	Description	Suitable for
CELCUWG3023126A	Lid for 125ml Glass culture flask, glass shaft, magnetic coupling and magnetic paddle blades	125ml Glass culture flask
CELCUWG3023251A	Lid for 250ml Glass culture flask, glass shaft, magnetic coupling and magnetic paddle blades	250ml Glass culture flask
CELCUWG3023501A	Lid for 500ml Glass culture flask, glass shaft, magnetic coupling and magnetic paddle blades	500ml Glass culture flask
CELCUWG3023104A	Lid for 1000ml Glass culture flask, glass shaft, magnetic coupling and magnetic paddle blades	1000ml Glass culture flask
CELCUWG3023304A	Lid for 3000ml Glass culture flask, glass shaft, magnetic coupling and magnetic paddle blades	3000ml Glass culture flask

### Stirring kit with glass ball impeller



Product code	Description	Suitable for
CELCUWG3023226A	Lid for 125ml Glass culture flask, glass ball impeller and connecting tube	125ml Glass culture flask
CELCUWG3023351A	Lid for 250ml Glass culture flask, glass ball impeller and connecting tube	250ml Glass culture flask
CELCUWG3023601A	Lid for 500ml Glass culture flask, glass ball impeller and connecting tube	500ml Glass culture flask
CELCUWG3023204A	Lid for 1000ml Glass culture flask, glass ball impeller and connecting tube	1000ml Glass culture flask
CELCUWG3023404A	Lid for 3000ml Glass culture flask, glass ball impeller and connecting tube	3000ml Glass culture flask

### Glass culture flask



Product code	Description	Suitable for
CELCUWG3023127A	125ml glass Glass culture flask with three necks, 1pc	125ml Glass culture flask
CELCUWG3023252A	250ml glass Glass culture flask with three necks, 1pc	250ml Glass culture flask
CELCUWG3023502A	500ml glass Glass culture flask with three necks, 1pc	500ml Glass culture flask
CELCUWG3023105A	1000ml glass Glass culture flask with three necks, 1pc	1000ml Glass culture flask
CELCUWG3023305A	3000ml glass Glass culture flask with three necks, 1pc	3000ml Glass culture flask

## Multi-Well Cell Culture Plates



- High quality polystyrene (PS) raw material, conforming to USP VI medical grade, excellent optical and chemical properties to ensure product stability and easy microscopic observation.
- Vacuum plasma surface treatment and uniform well to ensure well consistency.
- Cellular biocompatible (ISO:10993), sterile and endotoxin free.
- The lid well design ensure the gas exchange, reduce the risks of cross-contamination and evaporation.
- Alphanumeric marked wells, easy for identification.

### Ordering information

Product Code	Spec	Single Well Surface Area (cm <sup>2</sup> )	Recommended Operating Volume (ml/well)	pcs/case	Treat Method	Packing
CELCUFG060006S	6 wells	9.5	1.900-2.900	50	TC	Box
CELCUFG060012S	12 wells	3.8	0.760-1.140	50	TC	Box
CELCUFG060024S	24 wells	1.9	0.380-0.570	50	TC	Box
CELCUFG060048S	48 wells	0.95	0.190-0.285	50	TC	Box
CELCUFG060096S	96 wells	0.32	0.100-0.200	50	TC	Box
CELCUFG061006S	6 wells	9.5	1.900-2.900	50	Non-TC	Box
CELCUFG061012S	12 wells	3.8	0.760-1.140	50	Non-TC	Box
CELCUFG061024S	24 wells	1.9	0.380-0.570	50	Non-TC	Box
CELCUFG061048S	48 wells	0.95	0.190-0.285	50	Non-TC	Box
CELCUFG061096S	96 wells	0.32	0.100-0.200	50	Non-TC	Box

## Cell Culture Dish

Cell culture dishes are made from polystyrene (PS) materials and are suitable for laboratory inoculation, marking, weighing, separation and treatment of tissue or cells.



### Features

- Uniform thickness, no distortion for excellent observation.
- Easy to grip with gear ring design, reduce contamination risk.
- The ring protrusion on the cover is closely combined with the bottom to facilitate storage and reduce medium volatilization.
- Open petri dish lids with regular protrusions are available.
- Vacuum plasma surface treatment for ideal adhesive performance.
- No pyrogen, endotoxin free, no cytotoxic.
- Sterile by Gamma irradiation, SAL<10<sup>-6</sup>.

### Ordering information

TC treatment				
Product Code	Size (mm)	Min Package	Sales package	pcs/case
CELCUFG070060S	60	10pcs/pack	50packs/case	500
CELCUFG070100S	100	10pcs/pack	30packs/case	300
CELCUFG070150S	150	5pcs/pack	20packs/case	100

TC treatment				
Product Code	Size (mm)	Min Package	Sales package	pcs/case
CELCUFG071060S	60	10pcs/pack	50packs/case	500
CELCUFG071100S	100	10pcs/pack	30packs/case	300
CELCUFG071150S	150	5pcs/pack	20packs/case	100

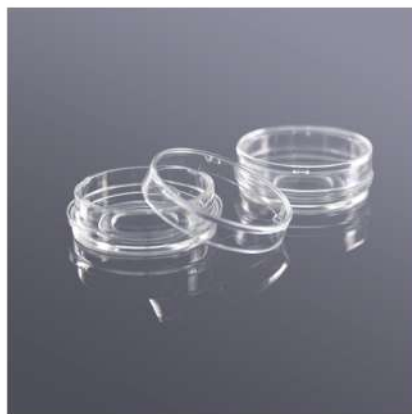
## Glass Bottom Dishes

GVS 35mm Glass Bottom Dishes offer the flexibility to convert your culture device into an imaging device. This allows a smooth transition from cell culture to cell analysis with the same seeding density, media volume, and culture conditions. The Dishes combine the convenience of a standard 35 mm cell culture dish with the imaging benefits of cover glass to provide the optimum optical characteristics required for high-magnification microscopy and confocal image analysis.

### Application and Features

- Glass bottom thickness: 0.16-0.19mm
- TC Treated
- Working volume: 3ml
- PS material, the bottom glass is made of borosilicate glass material, medical grade glue bonding
- No cytotoxicity, no pyrogen, no endotoxin
- Sterile.

Used in confocal laser microscopy, fluorescence microscopy, phase contrast microscopy, live cell imaging, differential interference contrast, fluorescence in situ hybridization (FISH) and other cell culture observation experiments



### Ordering information

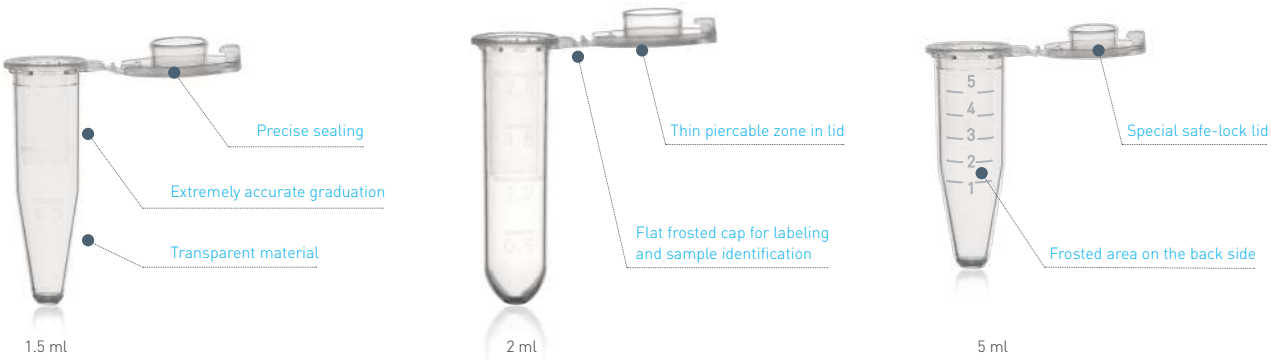
Product Code	Description
CELCUCG2314X0151A	15mm glass bottom cell culture dish, PS material dish with 0.16-0.19mm cover glass, TC treated, sterile.
CELCUCG2314X0152A	20mm glass bottom cell culture dish, PS material dish with 0.16-0.19mm cover glass, TC treated, sterile.

# Micro-Centrifuge Tube With Safe-Lock Cap

Made of high quality of transparent PP material, the new special design of safe lid can be fitted tightly with the rim of tube, and avoid accidental cap opening during centrifugation and thermal stress, especially applicable for expensive or hazardous samples, etc. The thin membrane lid can be pierced, suitable for the toxic biological substances without generating aerosols.

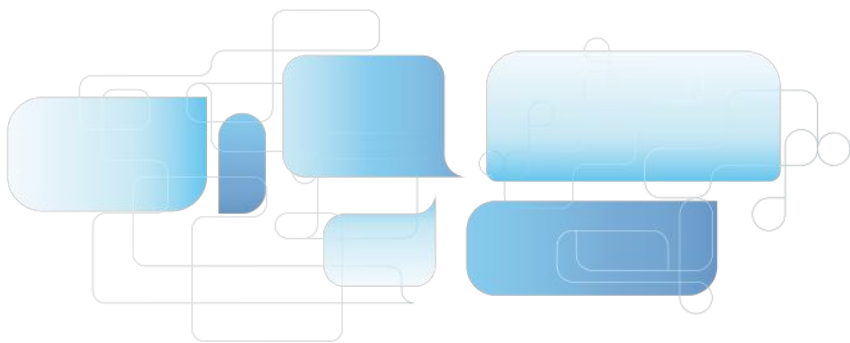
Features

- Open and close conveniently with one hand; Special safe-lock cap, tight-fitting lid provides a precise and safety sealing.
- Thin membrane lid can be pierced by a syringe; Accurate molded graduation for volume estimation.
- Flat lid and large frosted area on tube for easy sample identification.
- Withstand centrifugation up to 15000 xg (1.5 ml & 2 ml)/25000 xg (5 ml); Guaranteed functionality between -86°C to 121°C.



Ordering Information of Inverted Transfer Cap

Product Code	Description	Packing
CELCUCG4610X1910S	1.5 ml, Neutral, conical bottom, molded graduation from 0.5-1.5 ml, sterile	500 pcs/zip-lock bag, 5,000 pcs/carton
CELCUCG4610X1911S	2.0 ml, Neutral, round bottom, molded graduation from 0.5-2.0 ml, sterile	500 pcs/zip-lock bag, 5,000 pcs/carton
CELCUCG4610X1908S	5 ml, Neutral, conical bottom, molded graduation from 1-5 ml, sterile	200 pcs/zip-lock bag, 2,000 pcs/carton



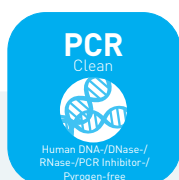
## Low Binding Microcentrifuge Tubes

Minimal valuable samples loss

Gene therapy and vaccine production often involve various types of purification for proteins, DNA, and other substances. Since nonspecific binding to plastic containers will lead to the loss of valuable samples, the purification processes often depend on high-quality plastic products for sample processing and storage. The smaller the sample volume is, the more important it becomes to reduce the binding between the sample and the container used.

The low binding microcentrifuge tubes of GVS is optimized for protein and DNA analytics. These tubes are made using a unique high-purity polypropylene polymer material that does not require any surface coating, such as siliconization. Strict quality control is implemented in accordance with ISO9001 and ISO13485. The stable quality ensuring significantly reduces binding between samples and plastic surface, minimizing sample loss and achieving a maximum recovery rate of your precious samples and more accurate analysis results.

- **Material:** Polypropylene (PP), conforming to USP Class VI standards
- **Capacity:** 0.5 mL, 1.5 mL and 2.0 mL

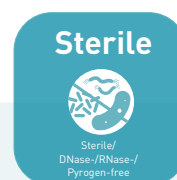


### Cleanliness Test Standard for GVS PCR

GVS offers top quality consumables that have successfully passed the PCR clean test. These consumables are specifically designed for nucleic acid-related test operations, including nucleic acid extraction, purification, PCR, qPCR, and more.

The products passing PCR clean test meet the following standards:

- |                     |                             |
|---------------------|-----------------------------|
| √Human DNA-free     | √DNase/RNase-free           |
| √PCR inhibitor-free | √Non-pyrogenic/No endotoxin |



### Standard for Sterility Quality Test

To minimize the influence of consumable contamination and adhere to strict analysis standards, GVS has implemented stringent sterility quality test standards. These standards encompass the production conditions, ensuring high cleanliness, as well as sterilization processes. This comprehensive approach strikes for optimal sterility levels, satisfies the most demanding analysis requirements.

The products passing sterility quality test meet the following standards:

- |                     |                             |                   |
|---------------------|-----------------------------|-------------------|
| √Sterile            | √Human DNA-free             | √DNase/RNase-free |
| √PCR inhibitor-free | √Non-pyrogenic/No endotoxin |                   |

### Quality Assurance

The sterility level meets the requirements of ISO11137, SAL < 10<sup>-6</sup>; pyrogen/endotoxin < 0.03 EU/mL; Human DNA < 0.03 pg/μL; DNase < 1×10<sup>-6</sup> Kunitz units; RNase < 1×10<sup>-9</sup> Kunitz units; PCR inhibitor ≤ 2 cycle offsets.

### Applications

- Preparation and storage of proteins, peptides, or antibodies
- Storage of virus to prevent viral titer reduction
- Storage of cell suspension
- Enzyme catalysis test
- DNA and RNA sample preparation and storage



## Features

### 1. Selected special raw materials

- Made of special high-purity polypropylene (PP) polymer with stable product performance
- High-transparency PP tube body for easy capacity and scale observation
- Working temperature range: -80°C~121°C (no deformation after autoclaving with open lid)

### 2. Excellent low protein/low nucleic acid binding

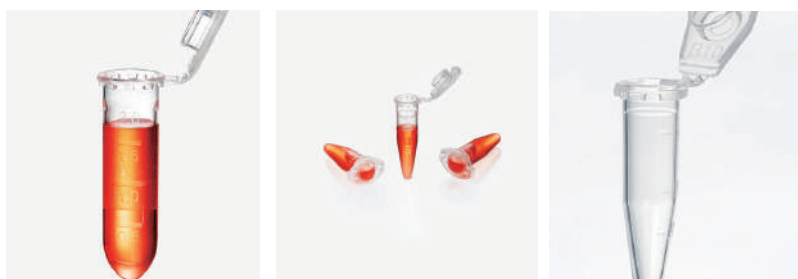
- Special materials can effectively reduce the nonspecific binding of protein/nucleic acid to the tube surface.
- No surface coating (e.g., silicification) on the tube wall can reduce sample binding and interference to samples.
- Samples of different proteins and nucleic acids can be ensured to the maximum recovery, with a recovery rate over 90%.

### 3. Ingenious design

- Lid lock prevents accidental opening of cap and evaporation of samples during long-term storage, and ensures operating safety.
- Smooth and transparent tube body with clear graduation, designed with a frosted writing area, makes it convenient for recording.
- Resealable bag packing (50 per bag) to reduce the risk of contamination.

### 4. Rigorous performance test

- The product has been tested for 18 items, including tightness, folding resistance of flipped cap, centrifugal force, solvent resistance, extractable and accelerated aging, which shows stable performance.
- The maximum centrifugal force for 1.5 mL, 2 mL is RCF 25,000 xg; the maximum centrifugal force for 0.5 mL is RCF 30,000 xg.
- Available in sterilized or non-sterilized, sterilized by irradiation, SAL 10<sup>-6</sup>
- DNase/RNase-free, Non-pyrogenic, human DNA-free, PCR inhibitor-free

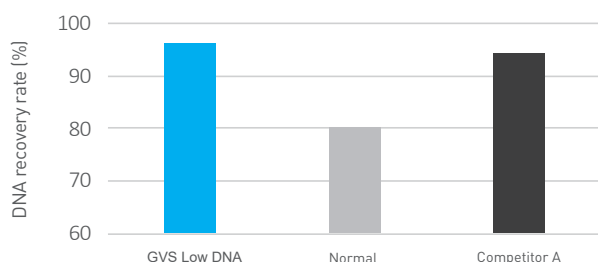


#### Note:

1. This product is not recommended for long-term sample storage for samples containing benzene, benzyl alcohol, or chloroform solvents.
2. Re-autoclaving of sterilized low binding microcentrifuge tubes may result in yellowing of the materials but does not affect the usage for the products.
3. The package can be removed and opened for autoclaving sterilization for one time. Repeated autoclaving sterilization is not recommended.

## Comparison Test Results of Typical Nucleic Acid Recovery

### Low DNA Microcentrifuge Tube - Minimal nucleic acid samples loss

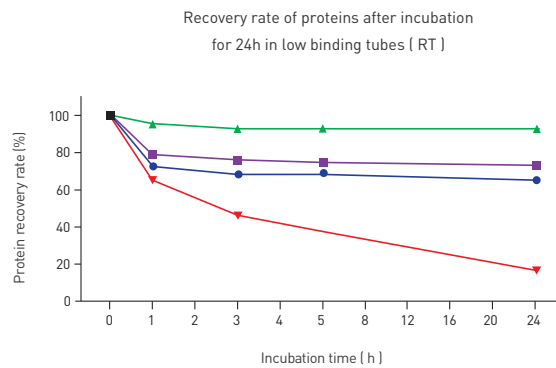
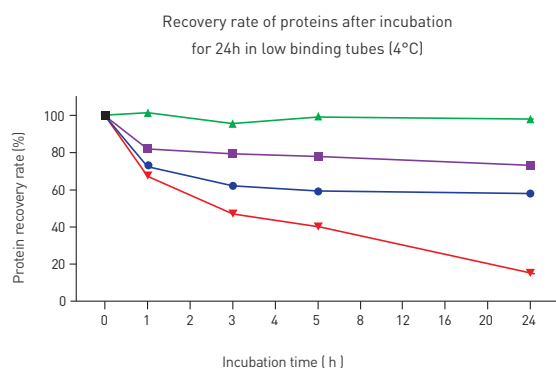


Microcentrifuge tubes from different suppliers are used, with 10 in a group, to fill an equal volume of 150 µL (0.1 ng/µL) of DNA solution diluted with DNA diluent, and incubated at 37°C for 24 h. The DNA recovery rate was determined by real-time PCR technology.

The Low DNA microcentrifuge tube of GVS has a high recovery rate for nucleic acid samples and can minimize the loss of nucleic acid samples.

## Comparison Test Results of Typical Protein Recovery

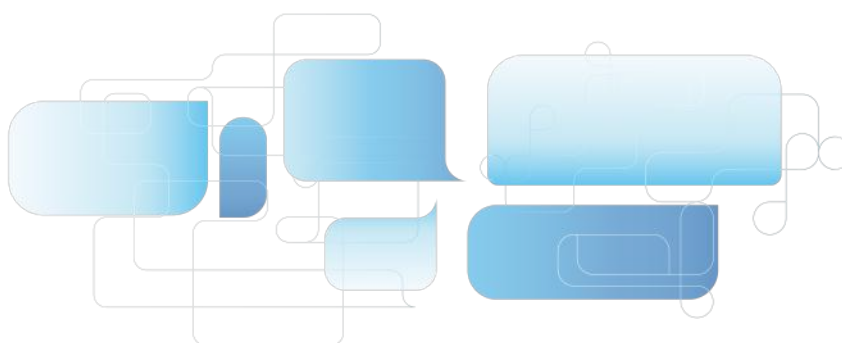
### Low Protein Microcentrifuge Tubes - Minimal protein samples loss



Microcentrifuge tubes from different suppliers are used to fill an equal volume of 1 µg/mL FITC-IgG protein solution, and stored in the dark at room temperature and 4°C. Measure the fluorescence values at 1 h, 3 h, 5 h, and 24 h, and calculate the average recovery rate (n = 6). The Low Protein microcentrifuge tube of GVS has a higher recovery rate for protein samples and can minimize the loss of protein samples.

## Ordering information

Product Number	Low Binding	Capacity(mL)	Maximum RCF (xg)	Sterile	Qty. Per Bag/Case
CELCUJGLP0005N	Protein	0.5	30,000	No	50/400
CELCUJGLP1005S	DNA	0.5	30,000	No	50/1200
CELCUJGLP0015N	Protein	1.5	25,000	No	50/400
CELCUJGLP1015S	DNA	1.5	25,000	No	50/1000
CELCUJGLP0020N	Protein	2.0	25,000	No	50/400
CELCUJGLP1020S	DNA	2.0	25,000	No	50/1000
CELCUJGLD0005N	Protein	0.5	30,000	Yes	50/400
CELCUJGLD1005S	DNA	0.5	30,000	Yes	50/1200
CELCUJGLD0015N	Protein	1.5	25,000	Yes	50/400
CELCUJGLD1015S	DNA	1.5	25,000	Yes	50/1000
CELCUJGLD0020N	Protein	2.0	25,000	Yes	50/400
CELCUJGLD1020S	DNA	2.0	25,000	Yes	50/1000



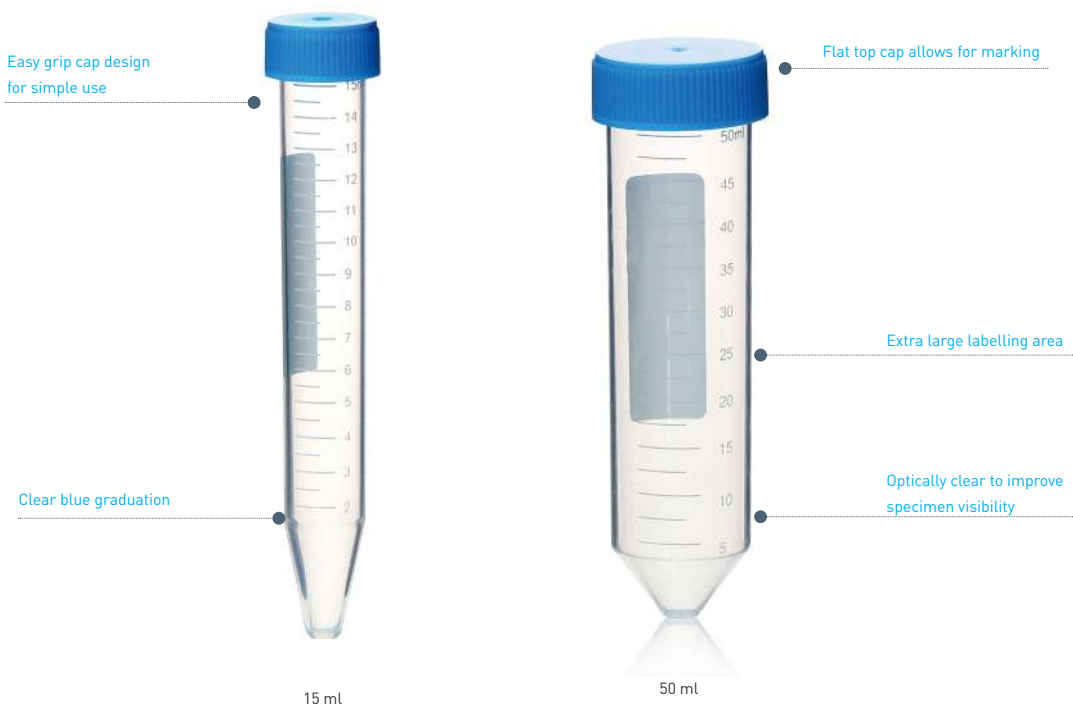
Centrifuge Tube



Intended for daily preparation, centrifugation, transportation, storage of solid and liquid specimens or reagents.

Features

- Consistent biological and physical properties, High transparent, medical grade PP material with flat caps for marking.
- RCF rating up to 12,000 xg.
- Easy-to-read printed graduations and a large white frosted area for labelling.
- Leak-proof.
- Packed in convenient durable racks or reusable Zip-lock bags.



**15 ml** DIM. 17x120 mm, Printed graduation range from 1.5 to 15 ml, interval at 0.5 ml

Product Code	Sterile	Packing
CELCUCG4610X1921S	Gamma	25 pcs/rack, 500 pcs/carton
CELCUCG4610X1922S	Gamma	50 pcs/zip-lock bag, 500 pcs/carton
CELCUCG4610X1923NS	Non sterile	50 pcs/zip-lock bag, 500 pcs/carton
CELCUCG4610X1924S	E.O.	1 pc/pack, 50 pcs/box, 500 pcs/carton

**50 ml** DIM. 30x115 mm, Printed graduation range from 5 to 47.5 ml, interval at 2.5 ml

Product Code	Sterile	Packing
CELCUCG4610X1940S	Gamma	25 pcs/rack, 300 pcs/carton
CELCUCG4610X1941S	Gamma	25 pcs/zip-lock bag, 500 pcs/carton
CELCUCG4610X1942NS	Non sterile	25 pcs/zip-lock bag, 500 pcs/carton
CELCUCG4610X1943S	E.O.	1 pc/pack, 50 pcs/box, 500 pcs/carton



Zip-lock bag

## 50 ml

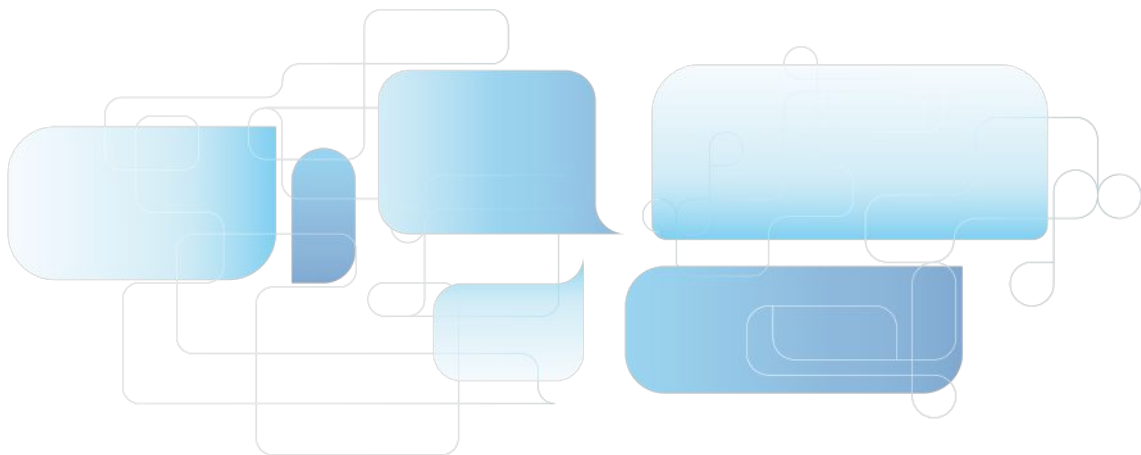
Self-standing, DIM. 30x117 mm, Printed graduation range from 5 to 47.5 ml, interval at 2.5 ml

Product Code	Sterile	Packing
CELCUCG4610X1981S	Gamma	25pcs/zip-lock bag,500pcs/carton
CELCUCG4610X1982NS	Non sterile	25pcs/zip-lock bag,500pcs/carton
CELCUCG4610X1983NS2	Non sterile	50pcs/bag,500pcs/carton
CELCUCG4610X1984S02	E.O.	1pc/pack,50pcs/box,500pcs/carton

## 50 ml

Self-standing, DIM. 30x107 mm, Green cap, Printed graduation range from 5 to 50 ml, interval at 5 ml

Product Code	Sterile	Packing
CELCUCG4610X1940S	Gamma	25 pcs/rack, 300 pcs/carton
CELCUCG4610X1941S	Gamma	25 pcs/zip-lock bag, 500 pcs/carton
CELCUCG4610X1942NS	Non sterile	25 pcs/zip-lock bag, 500 pcs/carton
CELCUCG4610X1943S	E.O.	1 pc/pack, 50 pcs/box, 500 pcs/carton



Metal-Free Centrifuge Tubes

The metal-free centrifuge tubes are made of transparent polypropylene (PP). They have been specially treated to ensure that more than 30 kinds of trace metal elements that can interfere with experiments are kept at levels of less than 1ppb (ICP-MS method). They are ideal for a variety of environmental tests such as water analysis, and other applications where samples may be contaminated by heavy metals in centrifuge tubes.



Features

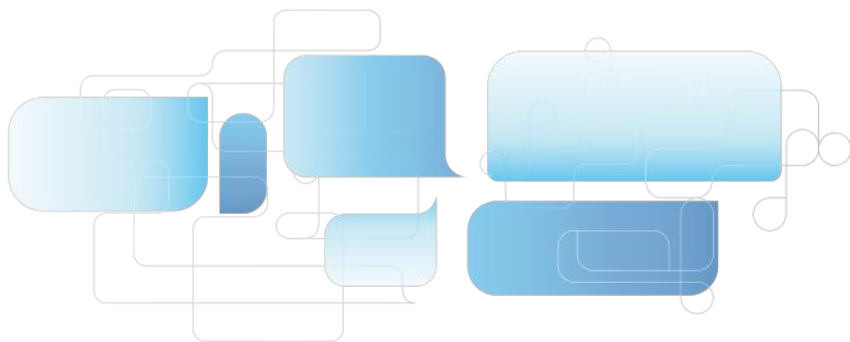
- Specification: 15 mL 50 mL
- Cap Type: Flat
- Bottom Type: Conical
- Packaging: Re-sealable Bag Paper Rack Bulk

Materials

- Tube Body: Polypropylene (PP),
- Tube Cap: High-density polyethylene (HDPE), conforming to USP Class VI standards

Ordering information

Product Code	Capacity (mL)	Bottom	Sterile	Maximum RCF (×g)	Package	Qty. Per Bag (Rack, Bulk)	Qty. Per Case
CELCUJGMFCT0150A	15	Conical	Y	12,500	Re-sealable bag	25	500
CELCUJGMFCT1150A	15	Conical	Y	12,500	Paper rack	50	500
CELCUJGMFCT2150A	15	Conical	Y	12,500	Bulk	500	500
CELCUJGMFCT0500A	50	Conical	Y	12,500	Re-sealable bag	25	500
CELCUJGMFCT1500A	50	Conical	Y	12,500	Paper rack	25	500
CELCUJGMFCT2500A	50	Conical	Y	12,500	Bulk	500	500



## 15 ml Centrifuge Tubes with Puncture Hole

These products are made of high-quality transparent polymer polypropylene (PP); the cap features a butyl rubber stopper for connecting to a syringe.



### Features

- Specification: 15 mL
- Bottom Type: Conical
- Materials: Tube body: Polypropylene (PP), Tube cover: High-density polyethylene (HDPE), conforming to USP Class VI standards

### Ordering information

Product Number	Volume (mL)	Bottom	Sterile	Max Rotational Speed (×g)	Description	Package	Qty. Per Bag	Qty. Per Case
CELCUJG013150BDA	15	Conical	Y	12500	Cap: 100/bag Tube: 25/bag	Re-sealable bag	Cap:100 Tube:25	Cap:500 Tube:500



## CellWell Tissue Culture Plate Inserts

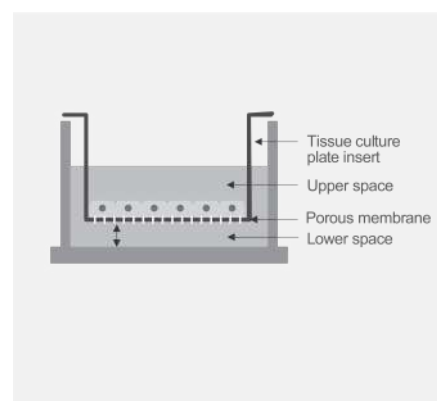
Tissue culture plate inserts are extensively used in a variety of cell tests, including co-culture tests, chemotaxis tests, and cell migration tests. With the membrane technology, cells that grow *in vitro* are more similar to those growing *in vivo* in terms of morphology and function. They are also used for studying cell functions such as cellular transport, absorption and secretion.

- Membrane Pore Size: 0.1  $\mu\text{m}$  0.4  $\mu\text{m}$  3.0  $\mu\text{m}$  5.0  $\mu\text{m}$  8.0  $\mu\text{m}$  12.0  $\mu\text{m}$
- Specification: 6-well 12-well 24-well
- Materials: Membrane: Polycarbonate(PC)/Polyethylene terephthalate(PET),
- Main Body: Polystyrene (GPPS), conforming to USP Class VI standards



### Features

- Excellent transmittance of the PET membrane, facilitating observation by microscope; Compared to the PET membrane, cell adhesion is stronger on the PC membrane and its higher pore density enables easier exchange of transmembrane substances
- 3 configurations of cell culture plate inserts and a variety of membrane pore sizes are available to meet a variety of different experimental requirements
- Innovative nested edge design facilitates sample addition
- Special central suspension design protects monolayer cells while preventing cell culture medium loss
- Excellent chemical compatibility of the membrane makes it compatible with most staining and fixed reagents
- Sterilized by irradiation, SAL 10-6
- DNase/RNase-free, non-pyrogenic and non-cytotoxic





## Chemical Compatibility

The PC membrane and PET membrane are suitable for histological fixatives such as methanol and formaldehyde, and also tolerate alcohol, amines, lipids, ethers, ketones and petroleum solvents (such as halogenated hydrocarbon and DMSO). In particular, the PET membrane has very good chemical applicability. However, strong acid ic and alkaline solutions are not recommended.

## Pore Density

The PET membrane and PC membrane have a rated pore density. In comparison, the PET membrane has a lower bore density than the PC membrane but is superior in terms of its optical performance.

The central suspension design of our tissue culture plate inserts leaves a certain distance between the nest and the bottom, so that the monolayer cells will not be destroyed when the nest is moved away, and culture medium loss via capillary action between the nested wall and pore wall can be prevented.

## Ordering information

### Polycarbonate (PC) MembraneTissue Culture Plate Inserts

Product Code	Well	Pore Size(μm)	Growth Area for Insert Membrane (cm²)	Sterile	Qty. Per Box	Qty. Per Case
CELCUJG000006A	6	0.1	4.67	Y	6	24
CELCUJG001006A	6	0.4	4.67	Y	6	24
CELCUJG005006A	6	1.0	4.67	Y	6	24
CELCUJG002006A	6	3.0	4.67	Y	6	24
CELCUJG003006A	6	8.0	4.67	Y	6	24
CELCUJG100006A	6	12.0	4.67	Y	6	24
CELCUJG000012A	12	0.1	1.12	Y	12	48
CELCUJG001012A	12	0.4	1.12	Y	12	48
CELCUJG005012A	12	1.0	1.12	Y	12	48
CELCUJG002012A	12	3.0	1.12	Y	12	48
CELCUJG003012A	12	8.0	1.12	Y	12	48
CELCUJG100012A	12	12.0	1.12	Y	12	48
CELCUJG000024A	24	0.1	0.33	Y	12	48
CELCUJG001024A	24	0.4	0.33	Y	12	48
CELCUJG005024A	24	1.0	0.33	Y	12	48
CELCUJG002024A	24	3.0	0.33	Y	12	48
CELCUJG003024A	24	8.0	0.33	Y	12	48
CELCUJG004024A	24	5.0	0.33	Y	12	48
CELCUJG100024A	24	12.0	0.33	Y	12	48

### Polyethylene Terephthalate (PET) MembraneTissue Culture Plate Inserts

Product Code	Well	Pore Size(μm)	Growth Area for Insert Membrane (cm²)	Sterile	Qty. Per Box	Qty. Per Case
CELCUJG017006A	6	0.1	4.67	Y	6	24
CELCUJG016006A	6	0.4	4.67	Y	6	24
CELCUJG018006A	6	1.0	4.67	Y	6	24
CELCUJG019006A	6	3.0	4.67	Y	6	24
CELCUJG020006A	6	8.0	4.67	Y	6	24
CELCUJG017012A	12	0.1	1.12	Y	12	48
CELCUJG016012A	12	0.4	1.12	Y	12	48
CELCUJG018012A	12	1.0	1.12	Y	12	48
CELCUJG019012A	12	3.0	1.12	Y	12	48
CELCUJG020012A	12	8.0	1.12	Y	12	48
CELCUJG017024A	24	0.1	0.33	Y	12	48
CELCUJG016024A	24	0.4	0.33	Y	12	48
CELCUJG018024A	24	1.0	0.33	Y	12	48
CELCUJG019024A	24	3.0	0.33	Y	12	48
CELCUJG020024A	24	8.0	0.33	Y	12	48

### Polycarbonate (PC) Membrane Tissue Culture Plate Inserts

Product Code	Pore Size (μm)	Culture Area (cm²)	Suggested Working Volume (mL)	Qty. Per Plate	Qty. Per Case
CELCUJG021024A	0.4	0.47	1.1	24	96

## Cell Strainer

Compatible for 250mL/225mL Conical Centrifuge Bottles



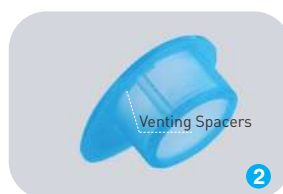
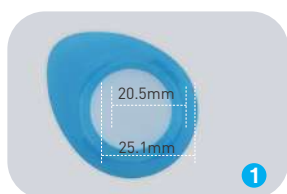
**Pore Size:** 40µm 70µm 100µm

**Color:** Blue White Yellow

**Materials:** Frame: Polypropylene (PP), Bottom: Nylon mesh, conforming to USP Class VI standards

The cell strainer is a sterile sieving device that quickly separates primary culture cells from cell clusters and tissues. It effectively removes cell aggregates or large particles from cell suspensions to ensure accurate subsequent experiments such as flow cytometry and cell sorting.

GVS cell strainers (compatible for 250mL/225mL conical centrifuge bottles) feature an enclosed frame side and a mesh bottom structure, with a mesh diameter of 20.5mm and a bottom frame outer diameter of 25.1mm. These specifications are tailored for GVS 250mL and 225mL conical centrifuge bottles but also compatible with most similar conical bottles on the market. The frame side includes two venting spacers to facilitate ventilation, effectively preventing mesh clogging and liquid overflow.



### Features

- Mesh diameter of 20.5mm and bottom frame outer diameter of 25.1mm, compatible for most of 250mL and 225mL conical centrifuge bottles. **1**
- The strainer's frame side features two venting spacers for enhanced ventilation, effectively preventing mesh clogging and liquid overflow. **2**
- Enclosed frame sides minimize residual samples.
- Extension edge of the strainer frame allows for aseptic operations.
- Frame and edge can be marked in different colors for easy handling and identification.
- The bottom consists of an evenly distributed nylon mesh, ensuring reliable and consistent experiment results.
- Blister packaging features a groove design for easy access. **3**
- Sterilized by irradiation to SAL 10<sup>-6</sup>; DNase/RNase-free, non-pyrogenic, an non-cytotoxic.

### Ordering information

Product Code	Pore Size	Strainer Diameter (mm)	Bottom Outer Diameter (mm)	Color	Sterile	Qty. Per Box	Qty. Per Case
CELCUJG013040A	40µm (330 mesh)	20.5	25.1	Blue	Y	50	200
CELCUJG013070A	70µm (220 mesh)	20.5	25.1	White	Y	50	200
CELCUJG013100A	100µm (150 mesh)	20.5	25.1	Yellow	Y	50	200
CELCUJG014040A	40µm (330 mesh)	20.5	25.1	Blue	Y	50	200
CELCUJG014070A	70µm (220 mesh)	20.5	25.1	White	Y	50	200
CELCUJG014100A	100µm (150 mesh)	20.5	25.1	Yellow	Y	50	200
CELCUJG015040A	40µm (330 mesh)	30.7	35.7	Blue	Y	50	200
CELCUJG015070A	70µm (220 mesh)	30.7	35.7	White	Y	50	200
CELCUJG015100A	100µm (150 mesh)	30.7	35.7	Yellow	Y	50	200
CELCUJG025040A	40µm (330 mesh)	30.7	35.7	Blue	Y	50	200
CELCUJG025070A	70µm (220 mesh)	30.7	35.7	White	Y	50	200
CELCUJG025100A	100µm (150 mesh)	30.7	35.7	Yellow	Y	50	200

## Small Cell Strainer

Compatible with 1.5mL-15mL Centrifuge Tubes, Flow Cytometry Tubes and Culture Tubes



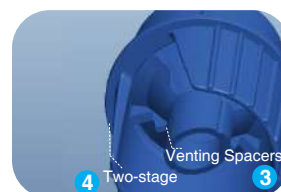
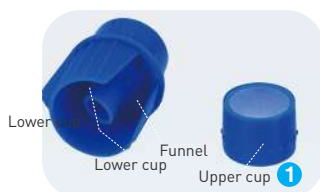
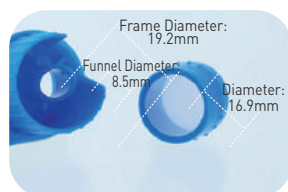
**Pore Size:** 40µm 70µm 100µm

**Color:** Blue White Yellow

**Materials:** Frame: Polypropylene (PP), Bottom Mesh: Nylon, conforming to USP Class VI standards

The cell strainer is a sterile sieving device that quickly separates primary culture cells from cell clusters and tissues. It effectively removes cell aggregates or large particles from cell suspensions to ensure accurate subsequent experiments such as flow cytometry and cell sorting.

GVS small cell strainers feature a split design with separate upper and lower cups, with a mesh diameter of 16.9mm, a lower cup inner diameter of 19.2mm, and a funnel outer diameter of 8.5mm. The upper cup of the small cell strainer is designed for filtration and collection, while the lower cup features a two-stage slot that enhances its compatibility. Additionally, the special venting spacers and air slots in the lower cup effectively prevent mesh clogging and liquid overflow.

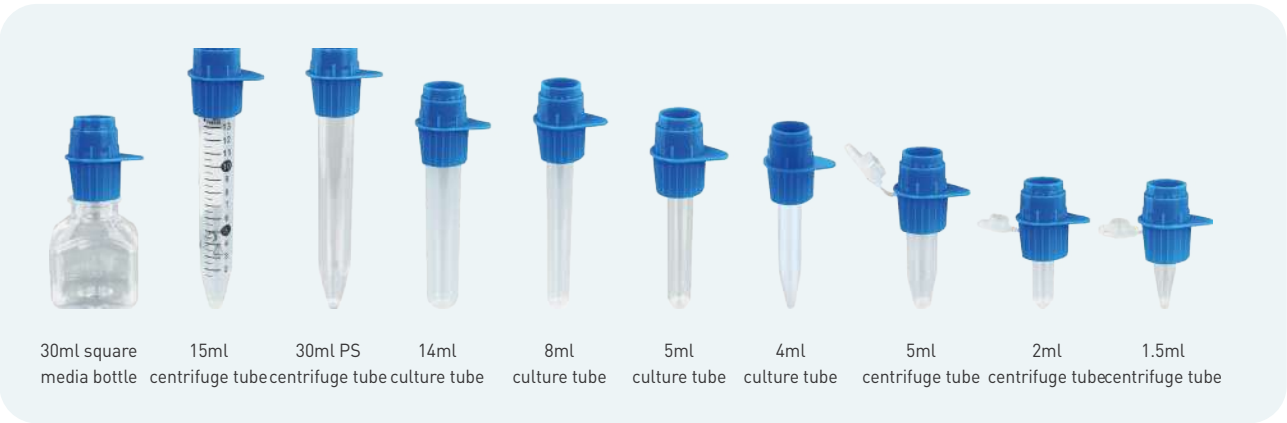


### Features

- Split Design: The innovative split design allows for the inverted collection of residual cells into the upper cup, effectively minimizing sample loss ①
- Special venting spacers ② and air slots ③ in the lower cup prevent mesh clogging and liquid overspill, ensuring smooth filtration
- Wide compatibility: suitable for most centrifuge tubes, flow cytometry tubes, and culture tubes on the market with an inner diameter greater than 9mm and an outer diameter less than 19mm
- Strainers of different pore sizes can be stacked for one-step sequential filtration, enhancing efficiency
- The frame handle supports aseptic operation, reducing the risk of contamination during handling
- Evenly distributed nylon mesh bottom, providing consistent experimental results
- The easy-to-tear individual packaging facilitates sterile operation and prevents contamination
- Sterilized by irradiation to SAL 10<sup>-6</sup>; DNase/RNase-free, non-pyrogenic and non-cytotoxic

# Cell Culture

## Compatible Tubes/Bottles



## Instruction for use

### Filtration




Connect the strainer to a 15mL centrifuge tube and add the cell suspension into the upper cup for filtration.

### Inversion



Invert the upper cup, connect the strainer to another 15mL centrifuge tube, and rinse back any residue on the strainer mesh.

### Stacking



Stack strainers of different mesh sizes for sequential filtration of varying cell sizes. Note that larger mesh pore size are above smaller ones.

## Ordering information

Product Code	Pore Size	Mesh Diameter (mm)	Lower Cup Diameter (mm)	Funnel Diameter (mm)	Upper Cup Capacity (mL)	Color	Sterile	Packaging	Qty. Per Box	Qty. Per Case
CELCUJG016040A	40µm (330 pores)	16.9	19.2	8.5	2.2	Blue	Y	Paper plastic bag	/	50
CELCUJG016070A	70µm (220 pores)	16.9	19.2	8.5	2.2	White	Y	Paper plastic bag	/	50
CELCUJG016100A	100µm (150 pores)	16.9	19.2	8.5	2.2	Yellow	Y	Paper plastic bag	/	50
CELCUJG026040A	40µm (330 pores)	16.9	19.2	8.5	2.2	Blue	Y	Blister packed	50	200
CELCUJG026070A	70µm (220 pores)	16.9	19.2	8.5	2.2	White	Y	Blister packed	50	200
CELCUJG026100A	100µm (150 pores)	16.9	19.2	8.5	2.2	Yellow	Y	Blister packed	50	200

## Cell Scrapers

**Cell Scrapers:** The specially designed cell scraper features a turning function to ensure that an ideal angle is maintained during cell collection, which makes it convenient for manually harvesting adherent cells from culture vessels.

**Rotatable Cell Scrapers:** The blade angle of the cell scraper changes with a slight pressure on the handle using the forefinger, which pushes the handle downward towards the floor of the culture vessel.



### Specification

- Length: 25 cm 39 cm
- Materials: Blade: TPE, Handle: ABS, conforming to USP Class VI standards
- Blade Specification: 2.0 cm 3.0 cm

### Features

- Two blade specifications available: scraper and lifter
- Specially designed to make the process of scraping and collecting cells easier and more effective
- Ultra-thin, flexible swivel blades are easy to use, reducing cell damage
- Easy removal and collection of cells using a scraping or lifting motion
- The 25 cm cell scraper is suitable for T25 and T75 culture flasks, while the 39 cm cell scraper is designed for other culture flasks/spinner bottles with higher capacities
- Individually wrapped
- Sterilized by irradiation, SAL 10<sup>-6</sup>
- DNase/RNase-free, non-pyrogenic and non-cytotoxic

### Ordering information

Product Code	Blade (cm)	Total Length (cm)	Material	Blade Position	Sterile	Qty. Per Bag	Qty. Per Case
CELCUJG011025A	2.0	25	Blade/TPE; Handle/ABS	Scraper	Y	1	100
CELCUJG012025A	2.0	25	Blade/TPE; Handle/ABS	Lifter	Y	1	100
CELCUJG011039A	3.0	39	Blade/TPE; Handle/ABS	Scraper	Y	1	100
CELCUJG012039A	3.0	39	Blade/TPE; Handle/ABS	Lifter	Y	1	100

## Cell Spreaders

Designed for spreading and dispersing liquids onto the surface of an agar plate Made of PP material, autoclavable, Supplied with triangle shaped and T shaped

### PACKING:

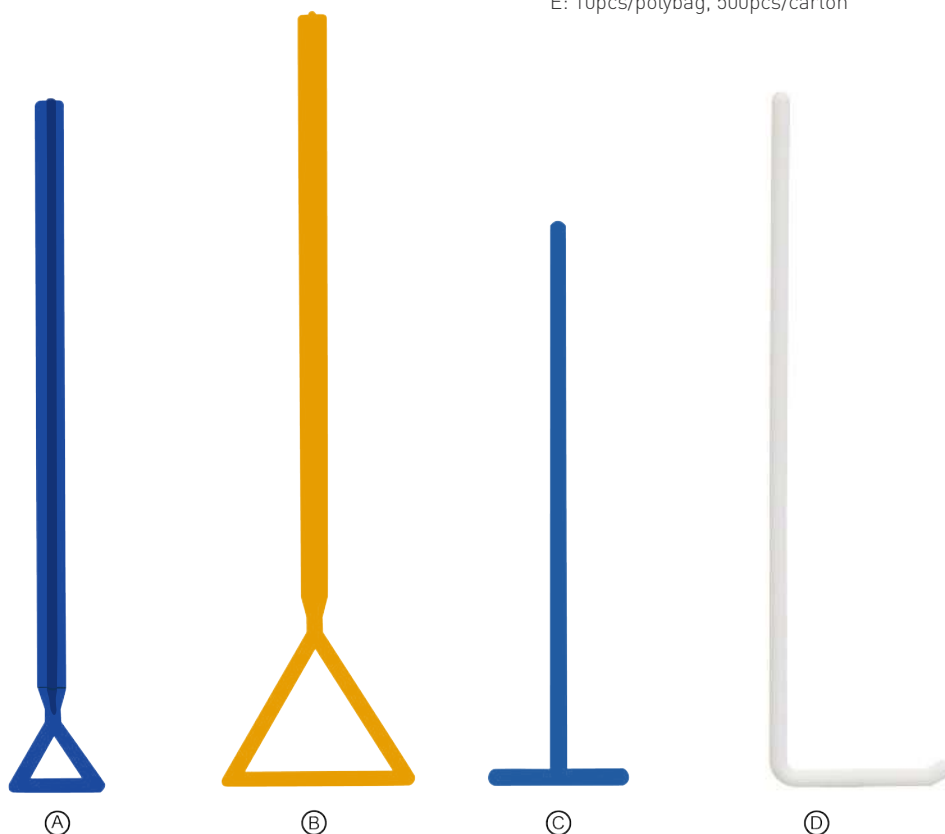
A: Individual Peel Pack, 100pcs/dispenser box, 1,000pcs/carton

B: 10pcs/polybag, 1000pcs/carton

C: 10pcs/polybag, 400pcs/carton

D: Individual Peel Pack, 400pcs/dispenser box, 4,000pcs/carton

E: 10pcs/polybag, 500pcs/carton



### A 215x30mm

Product Code	Sterile	Color	Packing
CELCUCG2400X0001X02A	Gamma	Blue	Type A
CELCUCG2400X0002X02A	-	Blue	Type B

### B 240x60mm

Product Code	Sterile	Color	Packing
CELCUCG2400X0003X17A	Gamma	Yellow	Type A
CELCUCG2400X0004X17A	-	Yellow	Type B

### C T Shape, 140x35mm

Product Code	Sterile	Color	Packing
CELCUCG2400X0005X02A	Gamma	Blue	Type D
CELCUCG2400X0006X02A	-	Blue	Type E

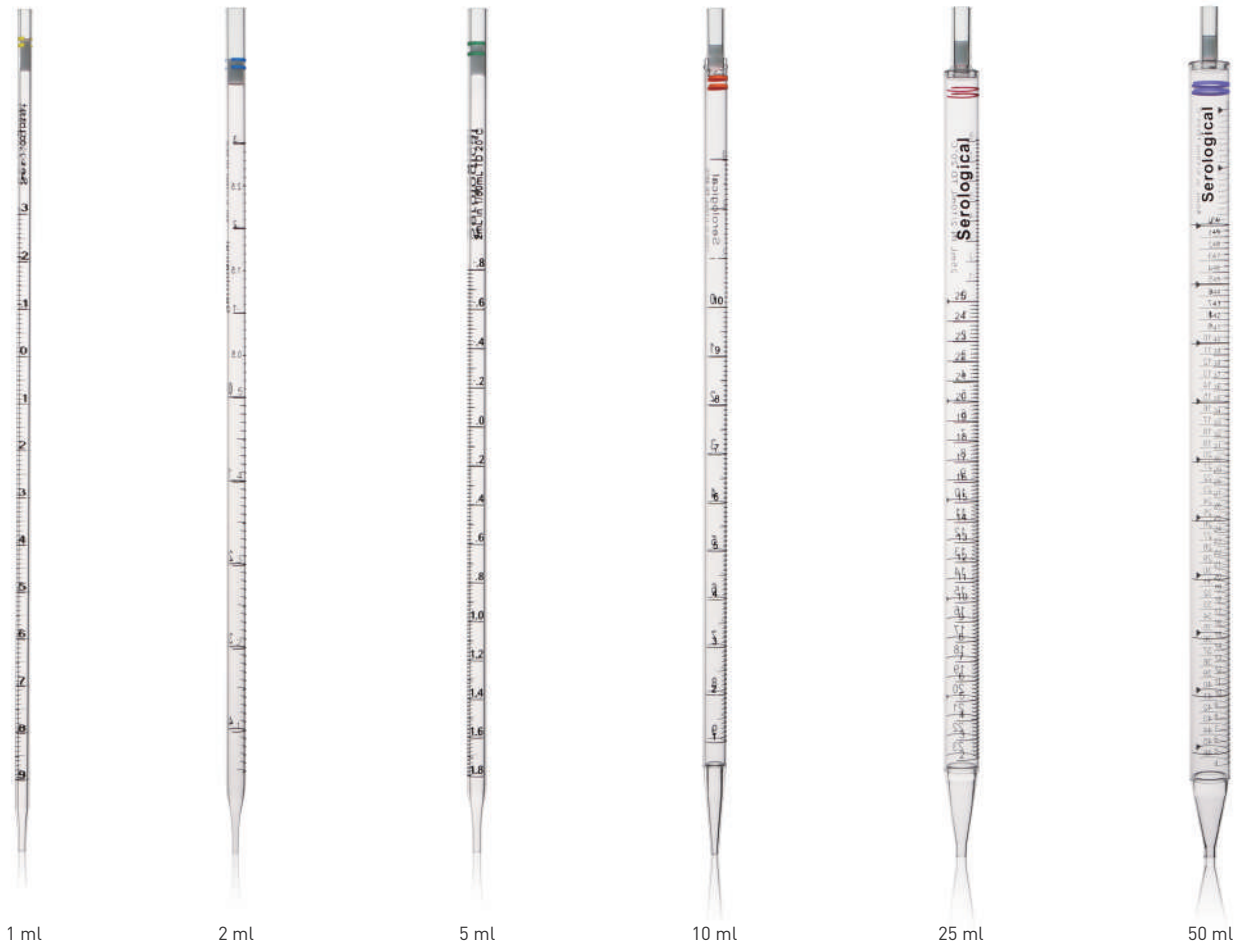
### D L Shape, 149x40mm

Product Code	Sterile	Color	Packing
CELCUCG2400X0011X16A	E.O.	White	Type D

## Serological Pipette, Plastic

Designed for quantitatively transferring and dispensing exact volumes of liquid.

- Biologically inert PS, disposable
- Easy-to-read graduation, color-coded by size for identification
- Sterile and non-sterile are available



### Ordering information

Product Code	Volume (ml)	Increments	Over fill capacity	Band Color	Qty/PK	Qty/Cs
CELCUMG011000101	1ml	1/100	0.2ml	Yellow	50	1000
CELCUMG011000102	2ml	1/100	0.2ml	Green	50	1000
CELCUMG011000103	5ml	1/10	2.5ml	Blue	50	500
CELCUMG011000104	10ml	1/10	3ml	Red	50	500
CELCUMG011000105	25ml	0.2	10ml	Purple	25	250
CELCUMG011000106	50ml	0.5	5ml	Black	20	200

Mini Serological Pipettes

- **Purpose:** Use for liquid transfer
- **Materials:**  
Pipette: GPPS (General polystyrene), compliance with USP Class VI  
Filter: PO (Polyolefin)



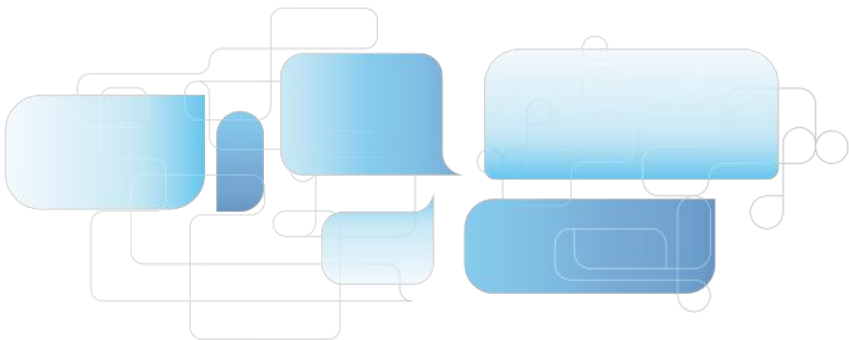
Features

- Temperature: -20°C to +50°C
- Available in individually packed in peel-to-open wrap
- Negative graduations up to -3mL (total volume = 8mL)
- Graduations are calibrated for accurate dispensing to within ±2%
- DNase/RNase free
- Non-pyrogenic
- Sterilized by irradiation SAL10-6 (ISO11137)
- Shelf Life: 3 years after month of production
- Manufactured in a class 100,000 room environment
- Manufactured under ISO13485 and ISO9001 quality management system



Ordering information

Product Code	Volume (ml)	Increments	Over fill capacity	Band Color	Qty/PK	Qty/Cs
CELCUJGMS010105	5ml	1/10	2.5ml	Blue	-	200
CELCUJGMS010205	5ml	1/10	2.5ml	Blue	-	200
CELCUJGMS010210	10ml	2/10	3ml	Orange	-	150
CELCUJGMS010225	25ml	0.2	10ml	Red	-	100





## Flake Microcarrier



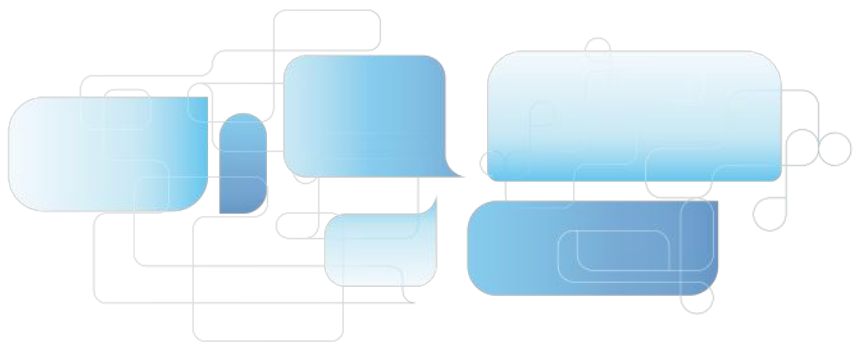
The flake carrier is a highly hydrophilic flake carrier, which uses vacuum plasma surface treatment technology and chemical grafting modification technology to enrich the flake carrier with more hydrophilic groups such as amino, hydroxyl or carboxyl groups, so that the cell adhesion performance of the carrier is stronger, which is not only suitable for subculture of Vero cells, HEK293 cells, CHO cells, BHK21 cells, ST cells, SF9/21 cells, etc., but also for CEF cells, PAM cells and CAR-T cells. Culture of primary cells.

### Features

- Double surface hydrophilic modification technology, treatment strong cell adhesion performance.
- Efficiently and simply isolate cultures and cells, harvest products, and perform perfusion or continuous fed-batch culture.
- Autoclavable.
- Can be used in packed bed bioreactors, single-use bioreactors, culture vessels, shake flasks to provide sufficient surface area for cell growth. - High area/volume ratio, high cell density.
- Multiple tension structures ensure that nutrients in the medium are in full contact with cells, which is conducive to cell growth.

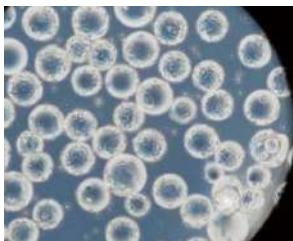
### Ordering information

Product Code	Description	Package	Bottle/case
CELCUFG090050S	Flake Microcarrier	50 g/bottle	40
CELCUFG090250S	Flake Microcarrier	250 g/bottle	20
CELCUFG090500S	Flake Microcarrier	500 g/bottle	10
CELCUFG090001S	Flake Microcarrier	1 kg/bottle	4



## Spherical Microcarrier

The spherical carrier is a spherical microcarrier formed by bonding diethylaminochloroethane on agarose microspheres, which makes cells easy to attach. It is also the most widely used microcarrier for adherent cell suspension culture. , mainly used for the research and development and production of biological products. It is suitable for subculture of Vero cells, HEK293 cells, Mrc-S cells, CHO cells, BHK21 cells, MDCK cells, ST cells, Marc14S cells, SF9/21 cells, etc. It is also suitable for CEF cells, PAM cells, myeloma cells and culture of primary cells such as CAR-T cells.



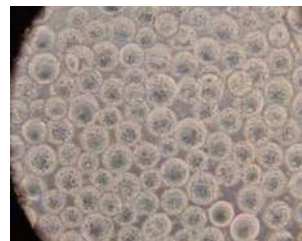
Cells were cultured for 24 h  
(100x)



Cells were cultured for 48 h  
(100x)



Cells were cultured for 72 h  
(100x)



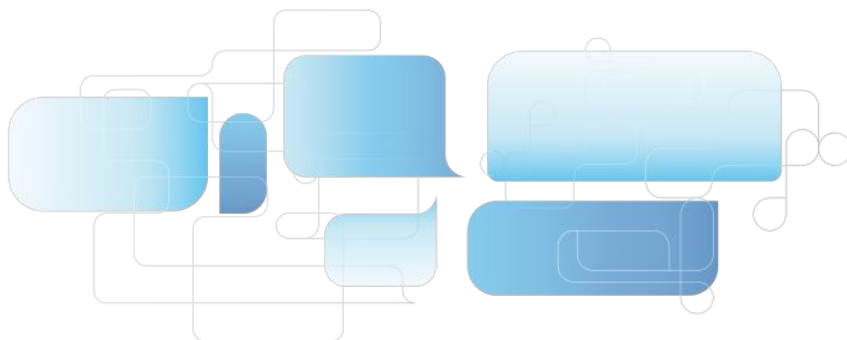
Cells were cultured for 96 h  
(100x)

### Features

- Efficient and simple isolation of cultures and cells, harvesting of products, perfusion or continuous feeding.
- It can be cultured in large-scale stirred bioreactors, single use bioreactors and shake flasks to provide sufficient surface area for cell growth.
- High area/volume ratio, high cell density.
- It is easy to enlarge the cells. The cells can be digested from the carrier and then inoculated into the new carrier, or the new carrier can be directly added to realize the "ball-to-ball" method to expand the culture.

### Ordering information

Product Code	Description	Package	Bottle/case
CELCUFG100050S	Spherical Microcarrier	50 g/bottle	40
CELCUFG100250S	Spherical Microcarrier	250g/bottle	20
CELCUFG100500S	Spherical Microcarrier	500g/bottle	10
CELCUFG100001S	Spherical Microcarrier	1 kg/bottle	4



## Square Media Bottle

### Ultra Clean Versions

Square media bottles have excellent gas barrier properties for storage and sampling of active pharmaceutical ingredients and bulk intermediates, and are also ideal for the preparation and storage of buffers, serum, culture fluids, or long-term storage of pH-sensitive liquids. The bottle is sterile and shatterproof with ergonomic square design, easier to use.



- Made of polyester (PET, PETG) with polypropylene cap.
- It is produced by injection stretch blow molding process, which has stronger gas barrier ability, high gloss of the bottle body, smooth inner and outer walls, the solution does not hang on the wall.
- Light weight, impact resistance, material can withstand -70°C low temperature, chemical resistance, good stability.
- High transparency, and the bottle body has a molded scale, which is convenient for visual observation of the solution volume.
- Cobalt 60 sterilization treatment, no pyrogen, no DNase, no RNase.
- The square ergonomic design is easy to grip and saves space.
- Anti-leakage, the lid and the bottle mouth cooperate more closely, and multiple control to ensure no leakage.

Note: This product does not support high temperature autoclave, only for storage. Can not be used as heating container.

Square Media Bottle

Ordering information

PET						
Product Code	Volume (ml)	Neck diameter (mm)	Height (without cap)	Height (with cap)	pcs/pack	pcs/case
CELCUFG084125S	125	35.4	104	108	24	96
CELCUFG084250S	250	35.4	140	144	56	224
CELCUFG084500S	500	35.4	172.5	176.5	20	80
CELCUFG084010S	1000	35.4	213	217	20	40

PETG						
Product Code	Volume (ml)	Neck diameter (mm)	Height (without cap)	Height (with cap)	pcs/pack	pcs/case
CELCUFG080060S	60	21.5	80.4	82.2	24	192
CELCUFG080125S	125	35.4	104	108	24	96
CELCUFG080250S	250	35.4	140	144	30	60
CELCUFG080500S	500	35.4	172.5	176.5	24	48
CELCUFG080010S	1000	35.4	213	217	12	24



## Closed Sampling System

- Provide thermoplastic tube or silicone tube for customers to choose.
- The acquiescent size of the liquid transfer line is IN 1/4", OD 7/16".
- Provide MPC/Luer connector for customers to choose.
- A variety of pipeline brands are available,the length and diameter of the pipeline can also be customized according to requirements.



### Bottle With Two Ports Tubing

Product Code	Volume	Sterile	Material	pcs/pack	pcs/case
CELCUFG088250S	250	30	60	Irradiation sterilization	PETG
CELCUFG088500S	500	24	48	Irradiation sterilization	PETG
CELCUFG088001S	1000	12	24	Irradiation sterilization	PETG



### Bottle With Three Ports Tubing

Product Code	Volume	Sterile	Material	pcs/pack	pcs/case
CELCUFG089250S	250	30	60	Irradiation sterilization	PETG
CELCUFG089500S	500	24	48	Irradiation sterilization	PETG
CELCUFG089001S	1000	12	24	Irradiation sterilization	PETG

Carboy bottle

The main body of the carboy is made of PC material, which can withstand high temperature processing and low temperature freezing storage, and is an ideal choice for storing sterile liquids, dispensing solutions and culture media.

Features

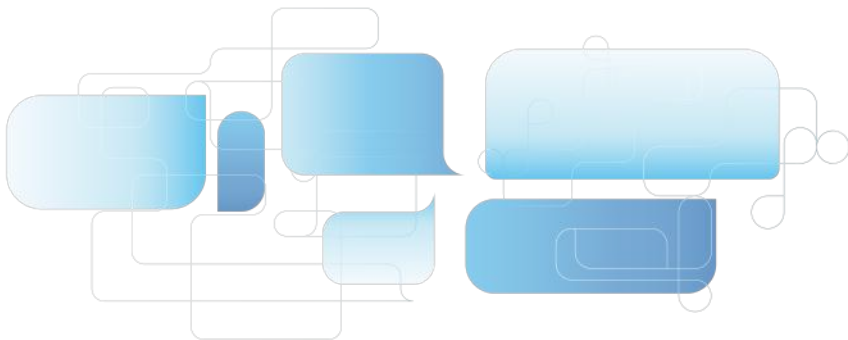
- The bottle body is produced by ISB one step molding process, which has better appearance and overall sealing.
- A variety of liquid conversion caps and sealing caps can be selected. Handle design for easy access.
- Endurance temperature-80~125 degrees.
- Standard size of barrel mouth, which can realize seamless replacement of most liquid storage barrels.
- The carboy body has a molded scale, which is convenient for liquid distribution and use.
- Slim mouth design, the carboy body has high transparency, easy to observe the solution state. Autoclavable.



Large mouth tee cover inner piping configuration Liquid inlet: 200mm IN 3/8 OD 5/8 Platinum vulcanized siliconeTubing,Liquid end:500mm IN 3/8 OD 5/8

Ordering information

Product Number	Volume (L)	Height (mm)	Diameter (mm)	Cap type	Inner diameter of external pipeline(mm)	Pcs/ case
CELCUFG091010S	10	534.23	224	seal cap	-	4
CELCUFG098010S	10	534.23	224	Big mouth two ports cap	6.35	4
CELCUFG099010S	10	534.23	224	Big mouth three ports cap	6.35	4



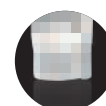
# General Labware

## CryoNOVA Cryogenic Tube

Double injection molding instead of traditional silicone seal ring inserting, to ensure the sealing performance of the cap. Do not use Cryogenic tubes in the liquid phase of liquid nitrogen. These cryogenic tubes are suited for research and general laboratory storage of cell cultures, bacteria and other samples in the vapor phase of liquid nitrogen.

### Features

- Produced from virgin PP material, the cap with a silicone gasket mounted in cap for additional leak-proof assurance
- Large writing areas for more sample information printed graduation for accurate measurement
- Sterilized and certified non-pyrogenic and RNase-free and DNase-free
- Self standing, star shaped and round bottom are available



Type A



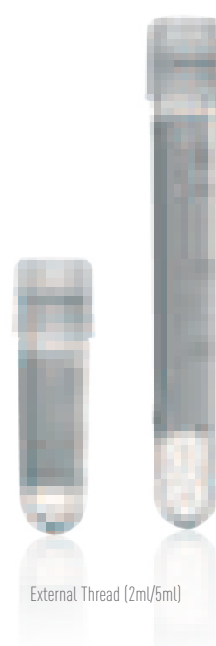
Type B



Type C



External Thread (1ml/2ml/4ml/5ml)

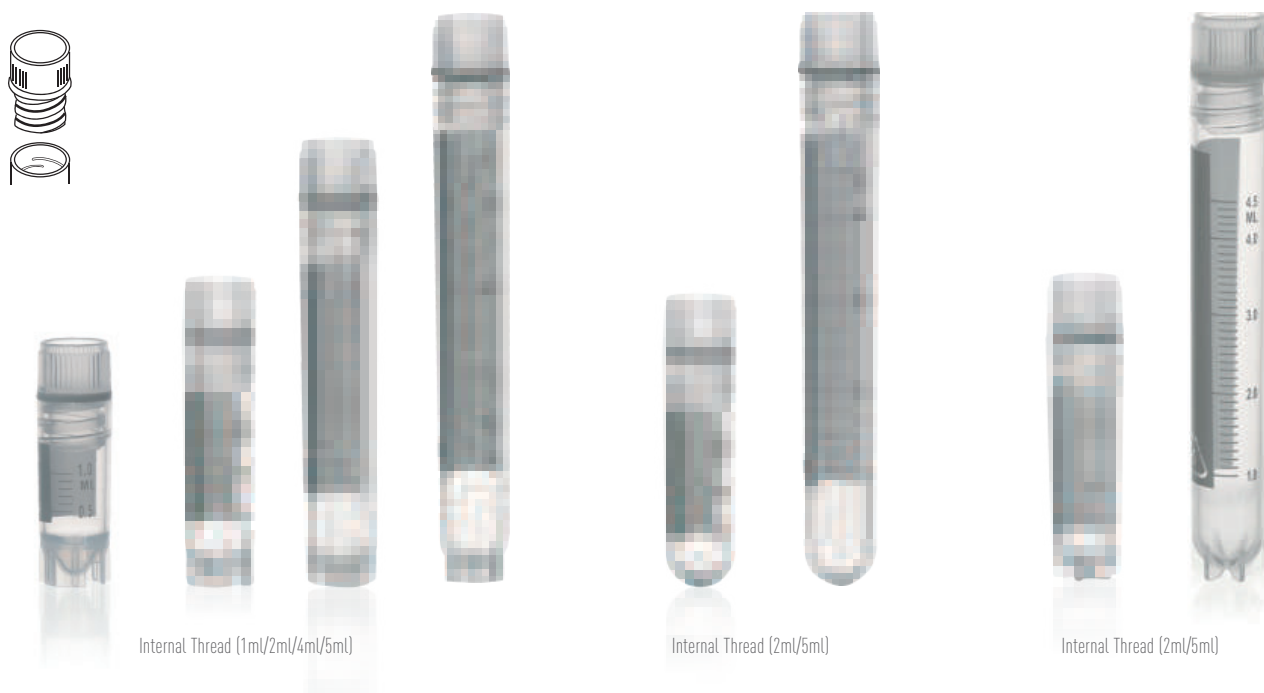


External Thread (2ml/5ml)



External Thread (2ml/5ml)





## CryoNOVA Cryogenic Tube, External Thread, PP Material

External thread type can minimize liquid retention.

Product Code	TYPE	VOL. (mL)	DIM.(H X OD) (mm)	Graduations(mL)	Packing
PLAC4004X1749S	A	1.0	41 x12.4	0.5/1.0	50pcs/zip-lock bag, 500pcs/inner box, 2000pcs/carton
PLAC4004X1725S	A	2.0	48.5 x12.4	0.5/1.0/1.8	50pcs/zip-lock bag, 500pcs/inner box, 2000pcs/carton
PLAC4004X1744S	B	2.0	48.5 x12.4	0.5/1.0/1.8	50pcs/zip-lock bag, 500pcs/inner box, 2000pcs/carton
PLAC4004X1745S	C	2.0	48.5 x12.4	0.5/1.0/1.8	50pcs/zip-lock bag, 500pcs/inner box, 2000pcs/carton
PLAC4004X1754S	A	4.0	70.3 x12.4	1.0/2.0/3.0/3.6	25pcs/zip-lock bag, 250pcs/inner box, 1000pcs/carton
PLAC4004X1726S	A	5.0	91.3 x12.4	1.0/2.0/3.0/4.0/4.5	25pcs/zip-lock bag, 250pcs/inner box, 1000pcs/carton
PLAC4004X1746S	B	5.0	91.3 x12.4	1.0/2.0/3.0/4.0/4.5	25pcs/zip-lock bag, 250pcs/inner box, 1000pcs/carton
PLAC4004X1737S	C	5.0	91.3 x12.4	1.0/2.0/3.0/4.0/4.5	25pcs/zip-lock bag, 250pcs/inner box, 1000pcs/carton

## CryoNOVA Cryogenic Tube, Internal Thread, PP Material

Internal thread type can minimize liquid retention and suit for storage in the vapor phase of liquid nitrogen.

Product Code	TYPE	VOL. (mL)	DIM.(H X OD) (mm)	Graduations (mL)	Packing
PLAC4004X1721S	A	1.0	41 x12.3	0.5/1.0	50pcs/zip-lock bag, 500pcs/inner box, 2000pcs/carton
PLAC4004X1722S	A	2.0	49 x12.3	0.5/1.0/1.8	50pcs/zip-lock bag, 500pcs/inner box, 2000pcs/carton
PLAC4004X1741S	B	2.0	49 x12.3	0.5/1.0/1.8	50pcs/zip-lock bag, 500pcs/inner box, 2000pcs/carton
PLAC4004X1742S	C	2.0	49 x12.3	0.5/1.0/1.8	50pcs/zip-lock bag, 500pcs/inner box, 2000pcs/carton
PLAC4004X1723S	A	4.0	70.3 x12.3	1.0/2.0/3.0/3.6	25pcs/zip-lock bag, 250pcs/inner box, 1000pcs/carton
PLAC4004X1738S	A	5.0	91.3 x12.4	1.0/2.0/3.0/4.0/4.5	25pcs/zip-lock bag, 250pcs/inner box, 1000pcs/carton
PLAC4004X1739S	B	5.0	91.3 x12.4	1.0/2.0/3.0/4.0/4.5	25pcs/zip-lock bag, 250pcs/inner box, 1000pcs/carton
PLAC4004X1740S	C	5.0	91.3 x12.4	1.0/2.0/3.0/4.0/4.5	25pcs/zip-lock bag, 250pcs/inner box, 1000pcs/carton

# Screw Cap Micro Tubes

The secure screw cap with O-ring seal in conjunction with the robust design makes the screw cap micro tube indispensable in your lab. They are ideal for centrifugation, transport, storage, and short-term cold storage.

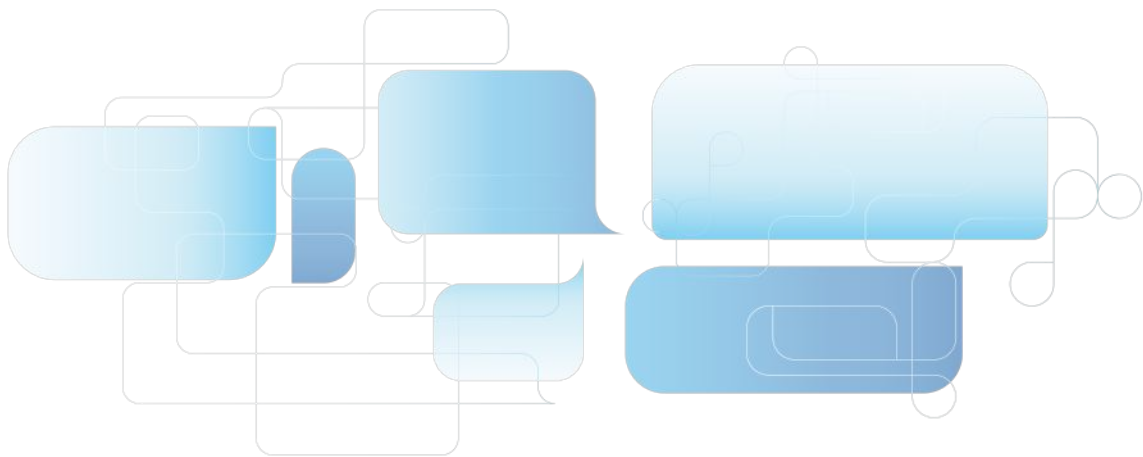
Features

- Made from 100% virgin polypropylene to help ensure maximum clarity for biological-basedwork
- Uniform wall thickness to withstand RCF 12000 xg
- Knurled Cap helps you achieve a firm grip when opening and closing
- Knurls lock tube into specialty racks for single-handed operation
- Screw cap micro tubes are available with the option of multicolored caps, attached or unattached cap

Ordering information

Packing:100pcs/bag, 1000pcs/carton

Product Code	VOL.(ML)	Sterile
PLAC4004X1835S	1.5	Y
PLAC4004X1836S	2	Y



## Transport Tube with Swab Capture Cap



- Tube in polypropylene /Cap in polyethylene
- Transport tubes are designed for the safe storage and transport of biological materials.
- The polyethylene cap feature a swab capture design to ensure the swab can be hold securely inside the cap, making it ideal for specimen collection and protection from contamination.
- The transparent polypropylene tubes allow unobstructed viewing of the sample.
- The tubes are shatter-proof and may be exposed to freezing temperatures.
- The tubes feature a frosted writing surface to make sample identification more convenient.
- Offered in five popular sizes

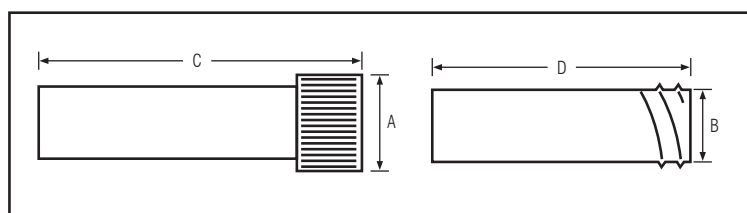


Swab Capture Design



	Product Code	VOL.	DIM(MM)	Graduations	Tube/Cap	Packing
1	PLAC4004X1514NS	5ml	16 x 56.5	Molded graduation	Assembled	100pcs/bag, 1000pcs/carton
	PLAC4004X1515NS	5ml	16 x 56.5	Molded graduation	Separate	100tubes/bag+1,000caps/bag, 1,000tubes+1,000caps/carton
2	PLAC4004X1562NS	5ml	16 x 60	Molded graduation	Assembled	100pcs/bag, 1000pcs/carton
	PLAC4004X1563NS	5ml	16 x 60	Molded graduation	Separate	100tubes/bag+1,000caps/bag, 1,000tubes+1,000caps/carton
3	PLAC4004X1512NS	8ml	16 x 85	Molded graduation	Assembled	100pcs/bag, 1000pcs/carton
	PLAC4004X1513NS	8ml	16 x 85	Molded graduation	Separate	100tubes/bag+1,000caps/bag, 1,000tubes+1,000caps/carton
4	PLAC4004X1579NS	10ml	16 x 94	Molded graduation	Assembled	100pcs/bag, 1000pcs/carton
	PLAC4004X1580NS	10ml	16 x 94	Molded graduation	Separate	100tubes/bag+1,000caps/bag, 1,000tubes+1,000caps/carton
5	PLAC4004X1590NS	10ml	16 x 102	Non graduation	Assembled	100pcs/bag, 1000pcs/carton
	PLAC4004X1592NS	10ml	16 x 102	Non graduation	Separate	100tubes/bag+1,000caps/bag, 1,000tubes+1,000caps/carton
6	PLAC4004X1597NS	7ml	13 x 80	Non graduation	Assembled	100pcs/bag, 1000pcs/carton
	PLAC4004X1596NS	7ml	13 x 80	Non graduation	Separate	100tubes/bag+1,000caps/bag, 1,000tubes+1,000caps/carto

Note: Dimensions for tube only



	A(mm)	B(mm)	C(mm)	D(mm)
1	21	16	58	56.5
2	21	16	62	60
3	21	16	89.5	85
4	21	16	96	94
5	21	16	102	100
6	17	13	80	82

Pre-Filling Transport Tube

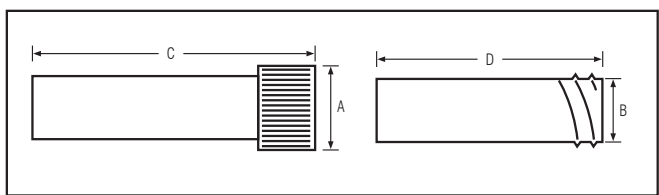
95 kpa

- Tube in polypropylene /Cap in polyethylene
- The standard pre-filling transport tube with the perfect seal is designed for pre-filling of transport liquid medium to preserve the viability of virus or bacteria during transport, as VTM/ UTM, and biological reagent for specimen analysis, and bacteria culture media for viewing growth.
- The transparent polypropylene tubes allow unobstructed viewing of the sample.
- The tubes are shatter-proof and may be exposed to freezing temperatures.
- The tubes are self-standing with conical bottom.
- The tubes can be supplied with a label on request
- Gamma Sterile



	Product Code	VOL.	DIM(MM)	Graduations	Tube/Cap	Packing
1	PLAC4004X1576S	5ml	16 x 56.5	Molded graduation	Separate	100tubes/bag+1,000caps/bag, 1,000tubes+1,000caps/carton
2	PLAC4004X1577S	8ml	16 x 85	Molded graduation	Separate	100tubes/bag+1,000caps/bag, 1,000tubes+1,000caps/carton
3	PLAC4004X1578S	10ml	16 x 94	Molded graduation	Separate	100tubes/bag+1,000caps/bag, 1,000tubes+1,000caps/carton
4	PLAC4004X1593S	12ml	16 x 102	Non graduation	Separate	100tubes/bag+1,000caps/bag, 1,000tubes+1,000caps/carton

Note: Dimensions for tube only



	A(mm)	B(mm)	C(mm)	D(mm)
1	21	16	58	56.5
2	21	16	89.5	85
3	21	16	96	94
4	21	16	102	100

## Premium PCR Consumables Series

### PCR Plates

The PCR plate is the carrier of an amplification reaction system in Polymerase Chain Reaction (PCR) experiments, which is widely used in genetics, biochemistry, immunology, medicine and other fields. The raw materials of the GVS PCR plates conform to USP Class VI standards. The plate surface is flat, firm and not easy to deform. The thin wall design of the tube body features good thermal conductivity and ensures high-efficiency PCR reaction.

- **Specification:** 96-well non-skirted, 96-well semi-skirted, 96-well agree fully skirted
- **Capacity:** 0.2 mL/well
- **Color:** Transparent, white
- **Material:** Polypropylene (PP), conforming to USP Class VI standards



### Features

- Thin tube wall design, uniform thickness, rapid and uniform heat transfer, reliable results and strong repeatability.
- The plate surface is flat and firm, resistant to warping, and remains reliable and non-deformable in automated, high temperature and high pressure (121°C, 20 min) processes, high-speed centrifugation (2000 ×g) and other operations.
- The edge of the wells protrude to prevent cross-contamination and to facilitate sealing, which can effectively reduce the evaporation of samples after sealing.
- Black letter markings to help quickly identify and trace samples when manually adding samples.
- Transparent and white plates are available. The white PCR plate is good for reading low-signal fluorescence values, reduce background fluorescence interference, and are more suitable for qPCR experiments.
- The plate type conforms to SBS/ANSI international standards; high adaptability and compatible with many mainstream brands of PCR/qPCR instruments.
- Each well is tested for 100% leak tightness to ensure safe sample handling.
- Human-derived DNA-free, DNase/RNase-free, pyrogen-free, PCR inhibitor-free, ATP-free.

# General Labware



Thin tube wall design,  
uniform thickness



The edge of the wells is  
protruding to prevent cross-  
contamination and to  
facilitate sealing



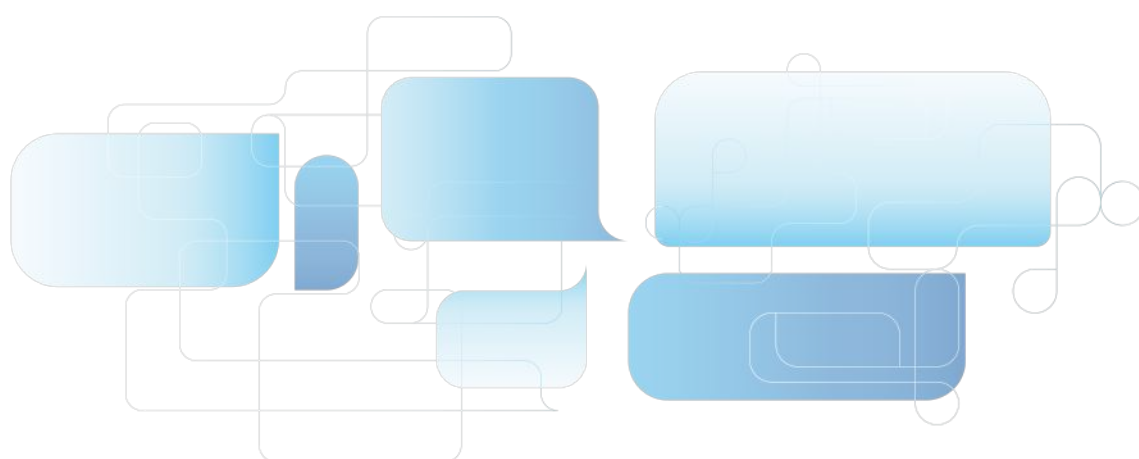
Black letter marking



White PCR plate

## Ordering information

Product Code	Capacity(mL)	Specification(Well)	Skirted	Color	Sterile	Qty.Per Box	Qty. Per Case
PLAJPCRD00096A	0.2	96	Non-skirted	Transparent	N	10	100
PLAJPCRD10096A	0.2	96	Semi-skirted	Transparent	N	10	100
PLAJPCRD20096A	0.2	96	Fully skirted	Transparent	N	10	100
PLAJPCRD01096A	0.2	96	Non-skirted	Transparent	Y	10	100
PLAJPCRD11096A	0.2	96	Semi-skirted	Transparent	Y	10	100
PLAJPCRD21096A	0.2	96	Fully skirted	Transparent	Y	10	100
PLAJPCRE00096A	0.2	96	Non-skirted	White	Y	10	100
PLAJPCRE10096A	0.2	96	Semi-skirted	White	Y	10	100
PLAJPCRE20096A	0.2	96	Fully skirted	White	Y	10	100



## PCR Tubes

The disposable PCR tube of GVS, with a capacity of 0.2 mL, is made of polypropylene (PP) conforming to USP Class VI standards. When used as the carrier of a PCR amplification system, it can repeatedly withstand high and low temperatures. For low-and medium-throughput PCR/qPCR experiments, the disposable PCR tube is an ideal solution.

- **Specification:** 8-tube strip, single-tube
- **Color:** Transparent, white
- **Material:** Polypropylene (PP), conforming to USP Class VI standards



## Features

- Thin tube wall design, uniform thickness, rapid and uniform heat transfer, reliable results and strong repeatability.
- Support high-RCF centrifugation (10000 ×g), autoclave sterilization (121°C, 20 min) and other operations.
- The tube cap fits perfectly with the body, ensuring a strong sealing performance. This effectively reduces the evaporation rate.
- Different markings at the head and end of the joint cap for easy identification of direction.
- Transparent and white tubes are available. The white PCR tube is good for reading low-signal fluorescence values and reduces background fluorescence interference, and is more suitable for qPCR experiments.
- DNase/RNase-free, human-derived DNA-free, PCR inhibitor-free, ATP-free, pyrogen-free.



Thin tube wall design,  
uniform thickness



The tube cap is well matched  
with the body, good sealing



Different marks at the head  
and end of the joint cap for easy  
identification of direction



White PCR tubes

## Ordering information

Product Code	Description	Color	Sterile	Qty. Per Bag	Qty. Per Case
PLAJPCRD10200A	0.2mL PCR Tubes with Flat Cap, Single	Transparent	N	1000	10000
PLAJPCRD20200A	0.2mL PCR Tubes with Flat Cap, 8 Strips	Transparent	N	125	1250
PLAJPCRD11200A	0.2mL PCR Tubes with Flat Cap, Single	Transparent	Y	1000	10000
PLAJPCRD21200A	0.2mL PCR Tubes with Flat Cap, 8 Strips	Transparent	Y	125	1250
PLAJPCRE20200A	0.2mL PCR Tubes with Flat Cap, 8 Strips	White	Y	125	1250
PLAJPCRF20200A	0.2mL PCR Tubes with Flat Cap, 8 Strips	Transparent	N	125	1250
PLAJPCRF21200A	0.2mL PCR Tubes with Flat Cap, 8 Strips	Transparent	Y	125	1250

## PCR Plate Sealing Film

GVS PCR plate sealing film can be used for routine 96-well PCR experiment, qPCR experiment, sample storage, etc.. Two types of common PCR microplate sealers and qPCR microplate sealers are available.



### Common PCR Plate Sealing Film

- **Material:** composed of PP material conforming to USP Class VI standard in the upper layer and medical grade adhesive in the lower layer
- **Thickness of sealing film:** 50  $\mu\text{m}$
- **Temperature tolerance range:** -80°C to 121°C

Economical and easy to use, suitable for mainstream PCR plates; Good sealing, low evaporation, prevents cross-contamination of samples between wells.

### qPCR Plate Sealing Film

- **Material:** The qPCR plate sealing film is composed of a layer of high-transparency PP sealer conforming to USP Class VI standard and medical grade adhesive
- **Thickness of adhesive sealer:** 50  $\mu\text{m}$
- **Temperature tolerance range:** -80°C to 121°C

Innovative adhesives ensure a safe seal without sticking to skin and gloves; Good sealing, low evaporation, prevents cross-contamination of samples between wells; No autofluorescence, suitable for fluorescent quantitative PCR.

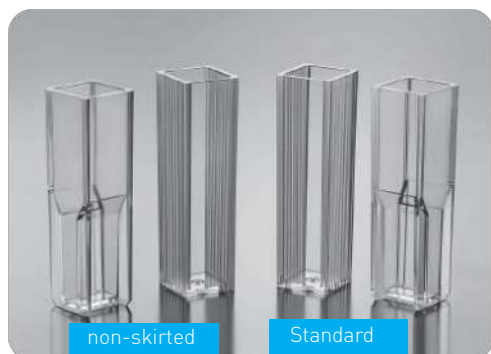
### Ordering information

Product Code	Type	Specification (Length mm*Width mm)	Sterile	Qty. Per Box	Qty. Per Case
PLAJPCRD00001A	PCR	137.5*82	N	100	1000
PLAJPCRD01001A	PCR	137.5*82	Y	100	1000
PLAJPCRD00003A	qPCR	140*80	N	100	1000
PLAJPCRD01003A	qPCR	140*80	Y	100	1000

Recommended storage conditions: 10°C-27°C, 40%-60% relative humidity



## Cuvettes



Cuvettes are a common consumable in spectral laboratory analysis. The GVS cuvettes are made of transparent polymer, polystyrene (PS), for its good chemical compatibility, and can be used for optical determination of most polar organic solutions, weak acidic solutions and weak alkaline solutions.

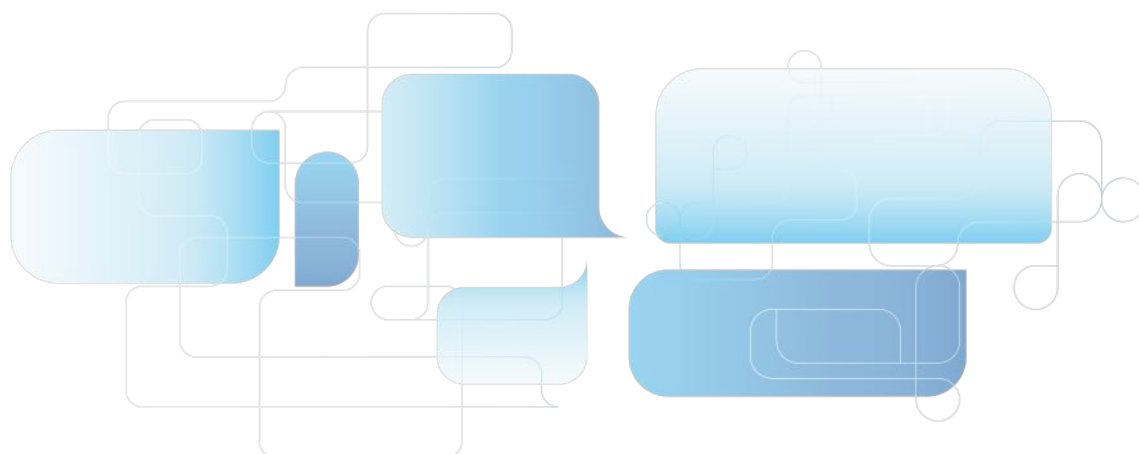
**Materials:** Polystyrene (GPPS), conforming to USP Class VI standards

### Features

- Available as standard type and semi-micro type (spectral range: 400 nm to 800nm, optical path: 10 mm)
- Made of high-quality optical plastic with good chemical compatibility
- Thanks to precision optical processing technology, the optical performance error of the light transmission surface is  $\leq 0.3\%$
- Recessed window reduces the risk of scratches during use. Matte surface provides an ideal labelling and operating area
- The semi-micro cuvette is marked with a light path arrow to ensure the consistency of projection direction

### Ordering information

Product Code	Type	Volume (mL)	Recommended Working Capacity (mL)	Optical Path (mm)	Optical Windows (piece)	Sterile	Qty. Per Box	Qty. Per Case
PLAJCUVE10015A	Semi-micro	1.5	1-2.5	10	2	N	100	1000
PLAJCUVE10045A	Standard	4.50	3-4	10	2	N	100	1000



# Centrifuge Tube Stands

The centrifuge tube stands are suitable for 2.0 mL, 15 mL and 50 mL conical-bottom centrifuge tubes. They can be used in combination with conical centrifuge tubes in the laboratory.

- **Materials:** Polypropylene (PP), conforming to USP Class VI standards



### Features

- The holes are designed for both 2.0 mL standard micro centrifuge tubes and 15 mL and 50 mL conical centrifuge tubes.
- The multi-hole design of the tube stand allows for accommodation of three 2.0 mL micro centrifuge tubes, three 15 mL centrifuge tubes and one 50 mL centrifuge tube.
- Can be cleaned for re-use
- The product is designed in the shape of a round table, making it extremely stable
- Working temperature range:-80°C–121°C
- Sterilized and non-sterilized available, sterilized by irradiation to SAL 10<sup>-6</sup>
- DNase/RNase-free, non-pyrogenic

### Ordering information

Product Code	Product Description	Sterile	Qty.Per Bag	Qty. Per Case
PLAJ320191001A	7 holes, suitable for 2.0 mL microcentri- fuge tube and 15 mL, 50 mL conical centrifuge tubes	N	1	50
PLAJ320192001A		Y	1	50
PLAJ320191002A		N	5	50
PLAJ320192002A		Y	5	50

## Freezing Box

Cross-Linked Polyethylene Foam with a Solid State Core, in combination with a -80 °C freezer, will provide alcohol-free freezing at the rate of -1 °C /minute that is ideal for cryopreservation of most cells and cell lines

- For 12 standard 1.0 mL to 2.0 mL cryogenic vials.
- Ease to use, freezing profiles are consistent and reproducible.
- Alcohol and fluid-free freezing, lowest cost of use than alcohol-based devices.
- High cell recovery and cell viability.
- Exposed vial tops when lid is open for quick, organized removal of frozen samples.



### Ordering information

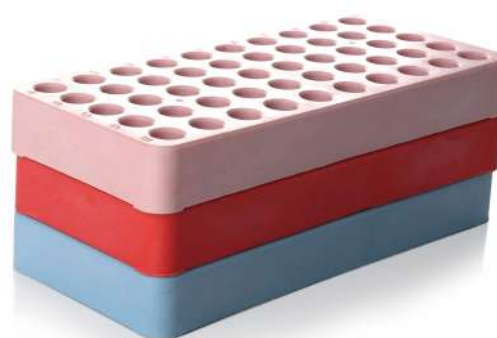
Product Code	Material	Packing
PLAC2510X1702A	PE	1pc/box, 12pcs/carton

## Cryo Vial Rack

This workstation rack accommodates both round bottom and self-standing cryogenic tubes. The self-standing tubes lock into the rack for easily one-handed opening and closing of caps.

- Dimension: 208(L)x93(W)x25(H)mm
- Each position is identified with an alphanumeric index

Product Code	Color	Packing
PLAC2510X1501X02A	Blue	1pc/bag, 50pcs/carton
PLAC2510X1501X13A	Red	1pc/bag, 50pcs/carton
PLAC2510X1501X08A	Green	1pc/bag, 50pcs/carton
PLAC2510X1501X09A	Purple	1pc/bag, 50pcs/carton
PLAC2510X1501X12A	Pink	1pc/bag, 50pcs/carton



## Cryo Vial Rack



Designed for storing 1.0~10ml cryogenic vials above the ultra-low temperature -273°C

- Aluminum Block Material
- Autoclavable and resistant to universal chemicals
- Maintains temperature through direct contact with ice, dry ice, water, liquid nitrogen
- High durability and non-deformation

Product Code	Place Layout	DIM. (MM)	Color	Packing
PLAC4050X4513A	5x7	135x100x36	Blue	1pc/inner box, 20pcs/carton

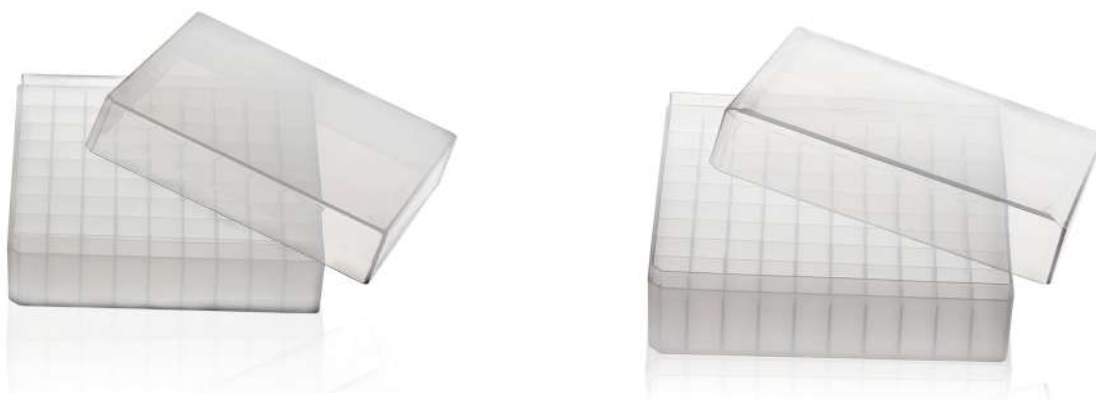


## Cell Freezing Container

Designed for storing 1.8ml cryotubes within temperature ranges of -196°C to 121°C

- **Material:** PP
- **Packing:** 1pc/polybag, 50pcs/carton

### Box, bottom & lid separated



#### Ordering information

Product Code	Place	Place Layout
PLAC2510X1101A	81	9x9
PLAC2510X1102A	100	10x10

### Box, with hinged-lid



#### Ordering information

Product code	Color	Place	Place Layout
PLAC2510X1104X02A	Blue	100	10 x 10
PLAC2510X1104X17A	Yellow	100	10 x 10
PLAC2510X1104A	Neutral	100	10 x 10

## Cryogenic Storage Box

- Printed numerical grid for easy identification
- Transparent lid for viewing contents
- Each box features one angled corners to guarantee proper alignment of the grid
- Autoclavable
- Boxes have vent holes for drainage and rapid freezing
- Fits in stainless steel freezer racks



### Ordering information

Product code	Description	For cryogenic tube	Packing
PLAC2510X1106A	81-place (9*9)	1-2ml, external thread	1pc/bag, 100pcs/carton
PLAC2510X1107A	100-place (10*10)	1-2ml, internal thread	1pc/bag, 100pcs/carton

## Ice Bucket



Suitable for use with ice, dry ice, dry ice alcohol slurries and liquid nitrogen within temperature ranges of -196°C to 93°C

- Made of EVA Foam, non-toxic and tasteless
- High durability and excellent insulation
- Chemical resistant and inert to moisture, odors, acetone and dry ice
- Secure handling and transport with molded handles
- Different dimension and color are optional



### Large

Packing: 1pc/inner box, 12pcs/carton

### Ordering information

Product Code	Dimension(MM) (TopxBottomxHeight)	Color
PLAC2513X0001X17A	255x160x175	Yellow
PLAC2513X0001X13A	255x160x175	Red
PLAC2513X0001X02A	255x160x175	Blue
PLAC2513X0001X08A	255x160x175	Green

### Medium

Packing: 1pc/inner box, 8pcs/carton

### Ordering information

Product Code	Dimension(MM) (TopxBottomxHeight)	Color
PLAC2513X0002X17A	255x190x115	Yellow
PLAC2513X0002X13A	255x190x115	Red
PLAC2513X0002X02A	255x190x115	Blue
PLAC2513X0002X08A	255x190x115	Green

## Freezing Box, Carboard

Designed for the long-term storage of cryogenic vials and centrifuge tubes in freezer rack systems.

Each box has a liquid resistant coating

### Storage Box for 15ml Centrifuge Tubes

Place: 36 <6 × 6>, Dimensions: 150×150×122 mm

For diam.17x120mm (15ml) centrifuge tubes

Product Code	Color	Packing
PLAC2510X1461X16A	White	48pcs/carton
PLAC2510X1462X02A	Blue	48pcs/carton
PLAC2510X1463X13A	Red	48pcs/carton
PLAC2510X1464X17A	Yellow	48pcs/carton
PLAC2510X1465X10A	Orange	48pcs/carton
PLAC2510X1466X08A	Green	48pcs/carton

Product Code	Packing
* PLAC2511X1499A	Replacement grid inserts(6x6), 12pcs/polybag, 40x12 pcs/carton

\*



### Storage Box for 50ml Centrifuge Tubes

Place:16 <4 × 4>, Dimensions: 150x150x122 mm

For diam. 30x115mm (50ml) centrifuge tubes

Product Code	Color	Packing
PLAC2510X1407X16A	White	48pcs/carton
PLAC2510X1408X02A	Blue	48pcs/carton
PLAC2510X1409X13A	Red	48pcs/carton
PLAC2510X1410X17A	Yellow	48pcs/carton
PLAC2510X1411X10A	Orange	48pcs/carton
PLAC2510X1412X08A	Green	48pcs/carton

Product Code	Packing
* PLAC2511X1491A	Replacement grid inserts(4x4), 12pcs/polybag, 40x12 pcs/carton

\*



## Box, with Exchange Holes



With 2 drain Dim. 27x5mm for drainage and rapid freezing

Each box is made of heavy-duty cardboard with white waterproof coating, the suitable working temperature range is -196°C to 121 °C .

Product Code	Place Layout	DIM.(mm)	For Tubes	Packing
PLAC2510X1459A	6 x 6	150x150x122	15ml conical tube	48pcs/carton
PLAC2510X1460A	4 x 4	150x150x122	50ml conical tube	48pcs/carton
PLAC2510X1461A	8 x 8	134x134x51	2" Cryotubes	96pcs/carton
PLAC2510X1462A	9 x 9	134x134x51	2" Cryotubes	96pcs/carton
PLAC2510X1463A	10 x 10	134x134x51	2" Cryotubes	96pcs/carton
PLAC2510X1464A	8 x 8	134x134x76	3" Cryotubes	48pcs/carton
PLAC2510X1465A	9 x 9	134x134x76	3" Cryotubes	48pcs/carton
PLAC2510X1466A	10 x 10	134x134x76	3" Cryotubes	48pcs/carton



## Micro-centrifuge Tubes Rack PP Material

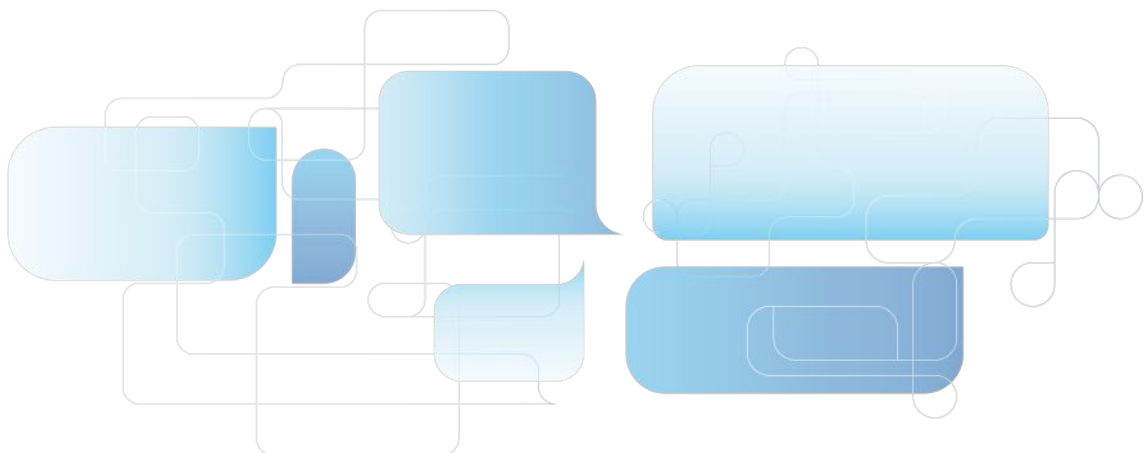
Designed for storing 0.5ml and 1.5ml micro-centrifuge tubes

- Withstand temperature from -70°C to 121°C
- Available with skirted design stackable
- Non-sterile, autoclavable



### Ordering information

Product code	Color	Place	Packing
PLAC5460X2101X10A	Orange	60(5×12)	1pc/bag, 50pcs/carton
PLAC5460X2102X02A	Blue	60(5×12)	1pc/bag, 50pcs/carton
PLAC5460X2103X08A	Green	60(5×12)	1pc/bag, 50pcs/carton
PLAC5460X2104X13A	Red	60(5×12)	1pc/bag, 50pcs/carton
PLAC5460X2105X10A	Orange	96(8×12)	1pc/bag, 50pcs/carton
PLAC5460X2106X02A	Blue	96(8×12)	1pc/bag, 50pcs/carton
PLAC5460X2107X08A	Green	96(8×12)	1pc/bag, 50pcs/carton
PLAC5460X2108X13A	Red	96(8×12)	1pc/bag, 50pcs/carton





## Centrifuge Tube Rack, ABS Material

Designed for holding both 15ml and 50ml centrifuge tubes in one rack

- Dimensions: 209×171×63mm
- Pack in flat from simply assemble
- Hold twenty 50ml and thirty 15ml centrifuge tubes



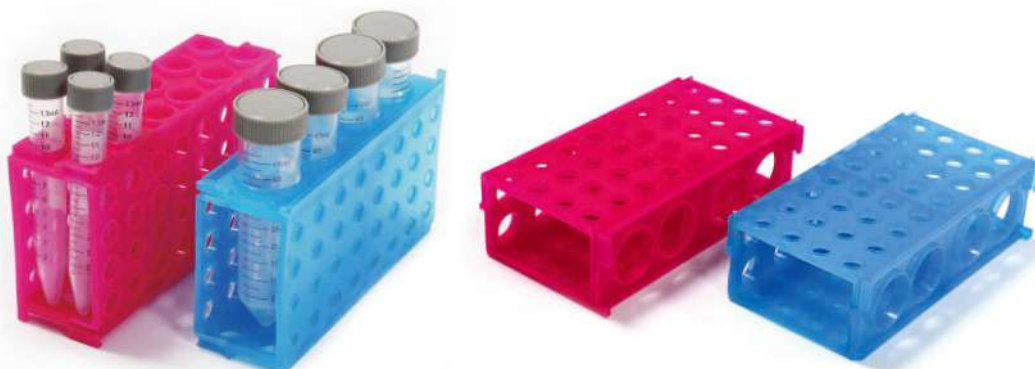
### Ordering information

Product code	Description	Packing
PLAC4050X4303A	Rack, for 15mL and 50mL Centrifuge Tubes, Orange	50pcs/carton
PLAC4050X4304A	Rack, for 15mL and 50mL Centrifuge Tubes, Blue	50pcs/carton

## Centrifuge Tube Rack, PP Material

Designed for holding 5ml, 15ml and 50ml centrifuge tubes in one rack

- Dimensions: 170×95×50mm
- Hold four 50ml, twelve 15ml, thirty-two 5ml centrifuge tubes
- Autoclavable and chemicals-resistant



### Ordering information

Product code	Description	Packing
PLAC4050X4113X13A	Rack, for 5ml, 15ml and 50ml centrifuge tube, Red	50pcs/carton
PLAC4050X4113X02A	Rack, for 5ml, 15ml and 50ml centrifuge tube, Blue	50pcs/carton



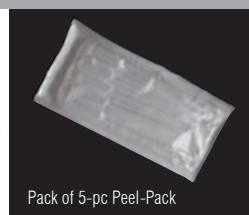
## Plastic Pasteur Pipette

Ideal for transferring and dispensing small amounts of liquid safely and rapidly.

- LDPE material, excellent transparency
- Sizes rang from 0.5 ml to 23ml, with molded graduation or not
- Sterile and non-sterile are available

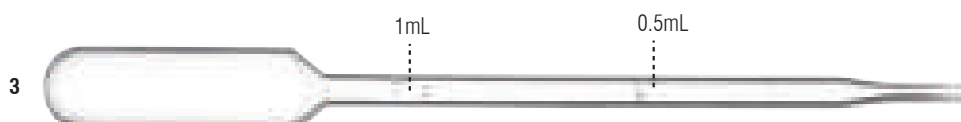
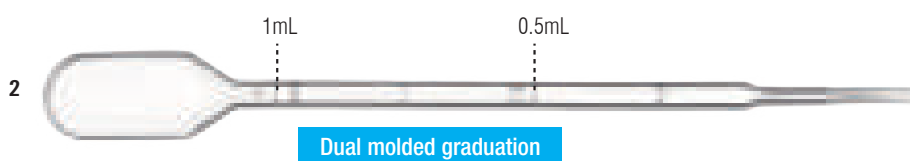


illustrated packing layout



### With Graduation

	Product Code	Length (mm)	Graduation	Overall Vol(ml)	Drops /ml	Sterile	Packing
1	PLAC4320X0611A	116	0.1mL up 0.3 mL	1.5	21	-	10x500pcs/dispenser box /carton
	PLAC4320X0612A	116	0.1mL up 0.3 mL	1.5	21	E.O	Individual flow-pack, 10x100pcs/dispenser box /carton
	PLAC4320X0613A	116	0.1mL up 0.3 mL	1.5	21	E.O	Individual peel-pack, 10x100pcs/dispenser box /carton
	PLAC4320X0614A	116	0.1mL up 0.3 mL	1.5	21	E.O	5pcs/flow pack, 10x400pcs/dispenser box /carton
	PLAC4320X0615A	116	0.1mL up 0.3 mL	1.5	21	E.O	20pcs/polybag, 10x400pcs/dispenser box /carton
	PLAC4320X0616A	116	0.1mL up 0.3 mL	1.5	21	E.O	5pcs/peel pack, 10x400pcs/dispenser box /carton
2	PLAC4320X0311A	140	1/4mL up 1 mL	3	-	-	10x500pcs/dispenser box/carton
	PLAC4320X0312A	140	1/4mL up 1 mL	3	-	E.O	Individual flow-pack, 10x100pcs/dispenser box /carton
	PLAC4320X0313A	140	1/4mL up 1 mL	3	-	E.O	Individual peel-pack, 10x100pcs/dispenser box /carton
	PLAC4320X0314A	140	1/4mL up 1 mL	3	-	E.O	5pcs/flow pack, 10x400pcs/dispenser box /carton
	PLAC4320X0315A	140	1/4mL up 1 mL	3	-	E.O	20pcs/polybag, 10x400pcs/dispenser box /carton
	PLAC4320X0316A	140	1/4mL up 1 mL	3	-	E.O	5pcs/peel pack, 10x400pcs/dispenser box /carton
3	PLAC4320X0111A	145	1/4mL up 1 mL	5	-	-	10x500pcs/dispenser box/carton
	PLAC4320X0112A	145	1/4mL up 1 mL	5	-	E.O	Individual flow-pack, 10x100pcs/dispenser box /carton
	PLAC4320X0113A	145	1/4mL up 1 mL	5	-	E.O	Individual peel-pack, 10x100pcs/dispenser box /carton
	PLAC4320X0114A	145	1/4mL up 1 mL	5	-	E.O	5pcs/flow pack, 10x400pcs/dispenser box /carton
	PLAC4320X0115A	145	1/4mL up 1 mL	5	-	E.O	20pcs/polybag, 10x400pcs/dispenser box /carton
	PLAC4320X0116A	145	1/4mL up 1 mL	5	-	E.O	5pcs/peel pack, 10x400pcs/dispenser box /carton

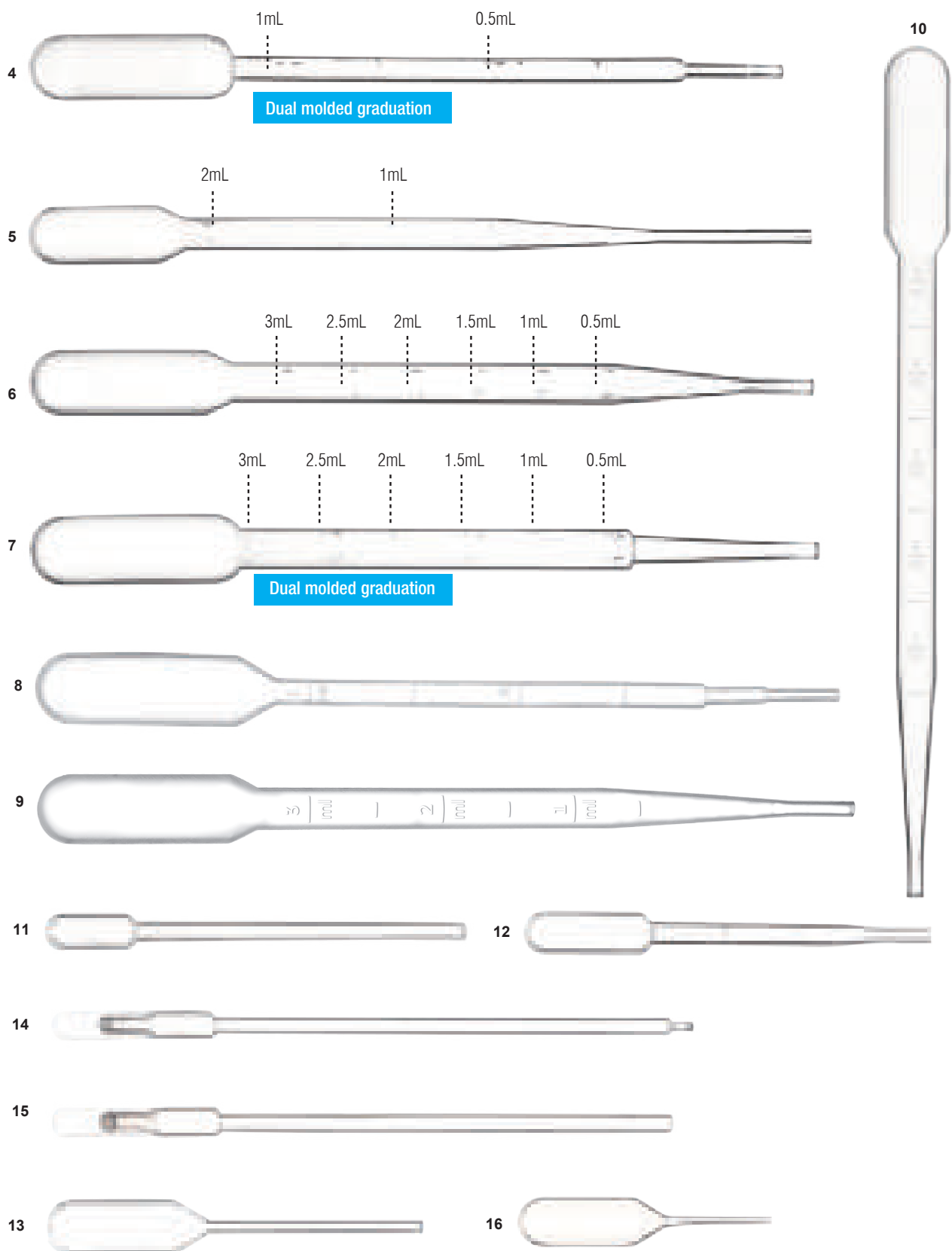


## With Graduation

	Product Code	Length (mm)	Graduation	Overall Vol(ml)	Drops /ml	Sterile	Packing
4	PLAC4320X0211A	150	1/4mL up 1 mL	5	-	-	10x500pcs/dispenser box/carton.
	PLAC4320X0212A	150	1/4mL up 1 mL	5	-	E.O	Individual flow-pack, 10x100pcs/dispenser box /carton
	PLAC4320X0213A	150	1/4mL up 1 mL	5	-	E.O	Individual peel-pack, 10x100pcs/dispenser box /carton
	PLAC4320X0214A	150	1/4mL up 1 mL	5	-	E.O	5pcs/flow pack, 10x400pcs/dispenser box /carton
	PLAC4320X0215A	150	1/4mL up 1 mL	5	-	E.O	20pcs/polybag, 10x400pcs/dispenser box /carton
	PLAC4320X0216A	150	1/4mL up 1 mL	5	-	E.O	5pcs/peel pack, 10x400pcs/dispenser box/carton
5	PLAC4320X0411A	155	1/2mL up 2 mL	5	-	-	10x500pcs/dispenser box/carton.
	PLAC4320X0412A	155	1/2mL up 2 mL	5	-	E.O	Individual flow-pack, 10x100pcs/dispenser box /carton
	PLAC4320X0413A	155	1/2mL up 2 mL	5	-	E.O	Individual peel-pack, 10x100pcs/dispenser box /carton
	PLAC4320X0414A	155	1/2mL up 2 mL	5	-	E.O	5pcs/flow pack, 10x400pcs/dispenser box /carton
	PLAC4320X0415A	155	1/2mL up 2 mL	5	-	E.O	20pcs/polybag, 10x400pcs/dispenser box /carton
	PLAC4320X0416A	155	1/2mL up 2 mL	5	-	E.O	5pcs/peel pack, 10x400pcs/dispenser box/carton
6	PLAC4320X0511A	155	1/2mL up 3 mL	7	-	-	10x500pcs/dispenser box /carton
	PLAC4320X0512A	155	1/2mL up 3 mL	7	-	E.O	Individual flow-pack, 10x100pcs/dispenser box /carton
	PLAC4320X0513A	155	1/2mL up 3 mL	7	-	E.O	Individual peel-pack, 10x100pcs/dispenser box/carton
	PLAC4320X0514A	155	1/2mL up 3 mL	7	-	E.O	5pcs/flow pack, 10x400pcs/dispenser box /carton
	PLAC4320X0515A	155	1/2mL up 3 mL	7	-	E.O	20pcs/polybag, 10x400pcs/dispenser box /carton
	PLAC4320X0516A	155	1/2mL up 3 mL	7	-	E.O	5pcs/peel pack, 10x400pcs/dispenser box /carton
7	PLAC4320X3111A	148	1/2mL up 3mL	7.5	23	-	10x500pcs/dispenser box /carton
	PLAC4320X3112A	148	1/2mL up 3mL	7.5	23	E.O	10xIndividual flow-pack, 100pcs/dispenser box /carton
	PLAC4320X3113A	148	1/2mL up 3mL	7.5	23	E.O	10xIndividual peel-pack, 100pcs/dispenser box /carton
	PLAC4320X3114A	148	1/2mL up 3mL	7.5	23	E.O	5pcs/flow pack, 10x400pcs/dispenser box /carton
	PLAC4320X3115A	148	1/2mL up 3mL	7.5	23	E.O	20pcs/polybag, 10x400pcs/dispenser box /carton
	PLAC4320X3116A	148	1/2mL up 3mL	7.5	23	E.O	5pcs/peel pack, 10x400pcs/dispenser box /carton
8	PLAC4320X3611A	158	1/2mL up 1mL	5.5	-	-	6x500pcs/dispenser box /carton
	PLAC4320X3613A	158	1/2mL up 1mL	5.5	-	E.O	Individual flow-pack, 8x500pcs/dispenser box /carton
9	PLAC4320X3711A	160	1/2mL up 3mL	7	-	-	10x500pcs/dispenser box /carton
10	PLAC4320X3901A	210	1/2mL up 5mL	12	-	-	10x500pcs/dispenser box /carton
	PLAC4320X3902A	210	1/2mL up 5mL	12	-	E.O	10x100pcs/dispenser box /carton

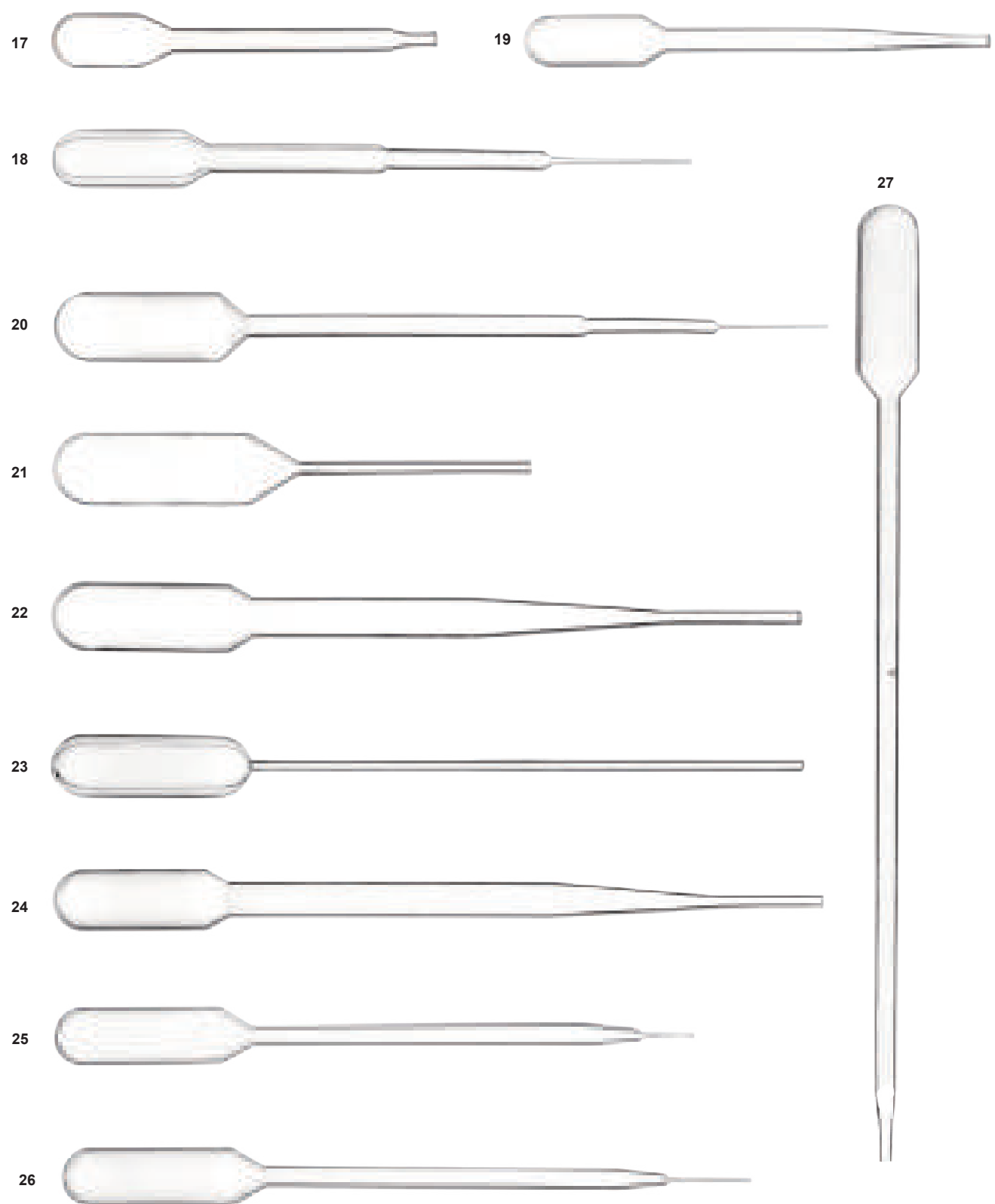
## Without Graduation

	Product Code	Length	Overall Vol(ml)	Drops/ml	Sterile	Packing
11	PLAC4320X3007A	70.5	0.5	15	15	1000pcs/dispenser box, 10x1000pcs/carton
12	PLAC4320X2801A	69	1.0	19	19	1000pcs/dispenser box, 10x1000pcs/carton
13	PLAC4320X0901A	65	1.2	-	-	1000pcs/dispenser box, 10x1000pcs/carton
	PLAC4320X0902A	65	1.2	-	E.O	Individual Flow-pack, 10x100pcs/dispenser box/carton
	PLAC4320X0904A	65	1.2	-	E.O	5pcs/flow pack, 400pcs/dispenser box, 10x400pcs/carton
	PLAC4320X0905A	65	1.2	-	E.O	20pcs/polybag, 400pcs/dispenser box, 10x400pcs/carton
14	PLAC4320X2001A	131	1	-	-	1000pcs/dispenser box, 10x1000pcs/carton
15	PLAC4320X2101A	124	0.8	-	-	1000pcs/dispenser box, 10x1000pcs/carton
16	PLAC4320X2701A	51	1.3	46	-	1000pcs/dispenser box, 10x1000pcs/carton
	PLAC4320X2702A	51	1.3	46	E.O	Individual Flow-pack, 10x100pcs/dispenser box/carton
	PLAC4320X2704A	51	1.3	46	E.O	5pcs/flow pack, 400pcs/dispenser box, 10x400pcs/carton
	PLAC4320X2705A	51	1.3	46	E.O	20pcs/polybag, 800pcs/dispenser box, 10x800pcs/carton



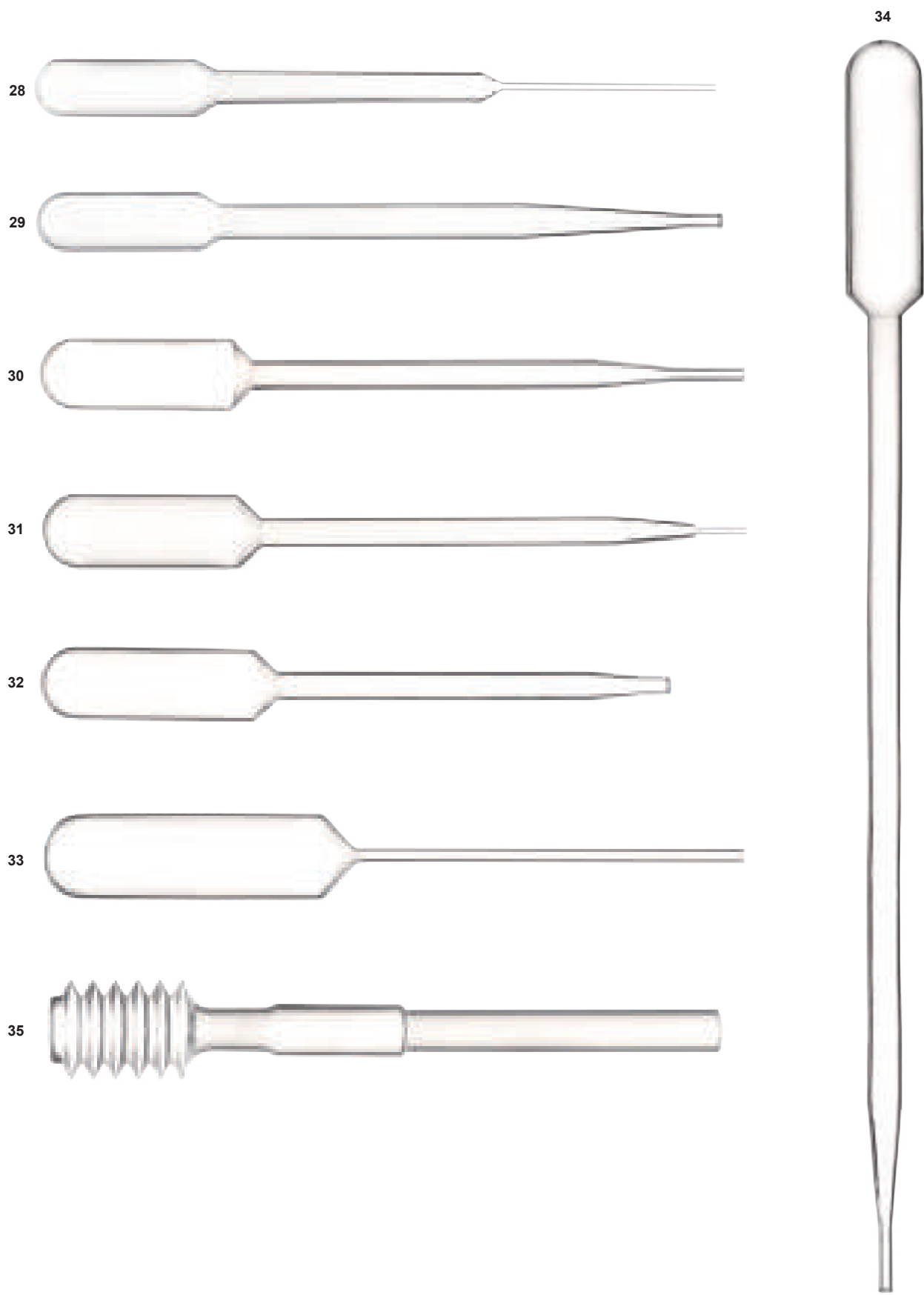
## Without Graduation

	Product Code	Length (mm)	Overall Vol(ml)	Drops/ml	Sterile	Packing
17	PLAC4320X2907A	70	1.6	26	-	1000pcs/dispenser box, 10x1000pcs/carton
18	PLAC4320X2401A	104	1.5	50	-	1000pcs/dispenser box, 10x1000pcs/carton
	PLAC4320X2402A	104	1.5	50	E.O	Individual flow-pack, 100pcs/dispenser box, 10x100pcs/carton
	PLAC4320X2403A	104	1.5	50	E.O	Individual peel-pack, 100pcs/dispenser box, 10x100pcs/carton
	PLAC4320X2404A	104	1.5	50	E.O	5pcs/flow pack, 200pcs/dispenser box, 10x200pcs/carton
	PLAC4320X2405A	104	1.5	50	E.O	20pcs/polybag, 400pcs/dispenser box, 10x400pcs/carton
	PLAC4320X2406A	104	1.5	50	E.O	5pcs/peel pack, 400pcs/dispenser box, 10x400pcs/carton
19	PLAC4320X0701A	87	2	-	-	1000pcs/dispenser box, 10x1000pcs/carton
	PLAC4320X0702A	87	2	-	E.O	Individual flow-pack, 100pcs/dispenser box, 10x100pcs/carton
	PLAC4320X0703A	87	2	-	E.O	Individual peel-pack, 10x100pcs/dispenser box /carton
	PLAC4320X0704A	87	2	-	E.O	5pcs/peel pack, 400pcs/dispenser box, 10x400pcs/carton
	PLAC4320X0705A	87	2	-	E.O	20pcs/polybag, 400pcs/dispenser box, 10x400pcs/carton
	PLAC4320X2501A	153	3.3	50	-	500pcs/dispenser box x 10/carton
20	PLAC4320X2502A	153	3.3	50	E.O	Individual flow-pack, 100pcs/dispenser box, 10x100pcs/carton
	PLAC4320X2503A	153	3.3	50	E.O	Individual peel-pack, 100pcs/dispenser box, 10x100pcs/carton
	PLAC4320X2504A	153	3.3	50	E.O	5pcs/flow pack, 400pcs/dispenser box, 10x400pcs/carton
	PLAC4320X2505A	153	3.3	50	E.O	20pcs/polybag, 400pcs/dispenser box, 10x400pcs/carton
	PLAC4320X2506A	153	3.3	50	E.O	5pcs/peel pack, 400pcs/dispenser box, 10x400pcs/carton
	PLAC4320X0801A	85	4	-	-	10x500pcs/dispenser box /carton
21	PLAC4320X0802A	85	4	-	E.O	Individual flow-pack, 10x100pcs/dispenser box /carton
	PLAC4320X0803A	85	4	-	E.O	Individual peel pack, 10x100pcs/dispenser box /carton
	PLAC4320X0804A	85	4	-	E.O	5pcs/peel pack, 10x400pcs/dispenser box /carton
	PLAC4320X0805A	85	4	-	E.O	20pcs/polybag, 10x400pcs/dispenser box /carton
	PLAC4320X1301A	130	4	25	-	10x500pcs/dispenser box /carton
	PLAC4320X1302A	130	4	25	E.O	Individual flow-pack, 10x100pcs/dispenser box /carton
22	PLAC4320X1303A	130	4	25	E.O	Individual peel-pack, 10x100pcs/dispenser box /carton
	PLAC4320X1304A	130	4	25	E.O	5pcs/flow pack, 10x400pcs/dispenser box /carton
	PLAC4320X1305A	130	4	25	E.O	20pcs/polybag, 10x400pcs/dispenser box/carton
	PLAC4320X1306A	130	4	25	E.O	5pcs/peel pack, 10x400pcs/inner box/carton
	PLAC4320X1201A	155	4.5	25	-	10x500pcs/dispenser box /carton
	PLAC4320X1202A	155	4.5	25	E.O	Individual flow-pack, 10x100pcs/dispenser box /carton
23	PLAC4320X1203A	155	4.5	25	E.O	Individual peel-pack, 10x100pcs/dispenser box /carton
	PLAC4320X1204A	155	4.5	25	E.O	5pcs/flow pack, 10x400pcs/dispenser box/carton
	PLAC4320X1205A	155	4.5	25	E.O	20pcs/polybag, 10x400pcs/dispenser box/carton
	PLAC4320X1206A	155	4.5	25	E.O	5pcs/peel pack, 10x400pcs/dispenser box /carton
	PLAC4320X1401A	154	5	23	-	10x500pcs/dispenser box /carton
	PLAC4320X1402A	154	5	23	E.O	Individual flow-pack, 10x100pcs/dispenser box /carton
24	PLAC4320X1403A	154	5	23	E.O	Individual peel-pack, 10x100pcs/dispenser box /carton
	PLAC4320X1404A	154	5	23	E.O	5pcs/flow pack, 10x400pcs/dispenser box/carton
	PLAC4320X1405A	154	5	23	E.O	20pcs/polybag, 10x400pcs/dispenser box/carton
	PLAC4320X1406A	154	5	23	E.O	5pcs/peel pack, 10x400pcs/dispenser box /carton
	PLAC4320X2201A	149	5.8	55	-	10x500pcs/dispenser box /carton
	PLAC4320X2202A	149	5.8	55	E.O	Individual flow-pack, 10x100pcs/dispenser box /carton
25	PLAC4320X2203A	149	5.8	55	E.O	Individual peel-pack, 10x100pcs/dispenser box /carton
	PLAC4320X2204A	149	5.8	55	E.O	5pcs/flow pack, 200pcs/dispenser box, 10x200pcs/carton
	PLAC4320X2205A	149	5.8	55	E.O	20pcs/polybag, 10x200pcs/dispenser box/carton
	PLAC4320X2206A	149	5.8	55	E.O	5pcs/peel pack, 10x400pcs/dispenser box /carton
	PLAC4320X2601A	156	5.8	50	-	10x500pcs/dispenser box /carton
	PLAC4320X2602A	156	5.8	50	E.O	Individual flow-pack, 10x100pcs/dispenser box /carton
26	PLAC4320X2603A	156	5.8	50	E.O	Individual peel-pack, 10x100pcs/dispenser box /carton
	PLAC4320X2604A	156	5.8	50	E.O	5pcs/flow pack, 10x400pcs/dispenser box/carton
	PLAC4320X2605A	156	5.8	50	E.O	20pcs/polybag, 10x400pcs/dispenser box/carton
	PLAC4320X2606A	156	5.8	50	E.O	5pcs/peel pack, 10x400pcs/dispenser box /carton
	PLAC4320X1801A	226	6	-	-	10x500pcs/dispenser box /carton
	PLAC4320X1802A	226	6	-	E.O	Individual flow-pack, 10x100pcs/dispenser box/carton
27	PLAC4320X1804A	226	6	-	E.O	5pcs/flow pack, 10x400pcs/dispenser box /carton
	PLAC4320X1805A	226	6	-	E.O	20pcs/polybag, 10x400pcs/dispenser box /carton



## Without Graduation

	Product Code	Length (mm)	Overall Vol(ml)	Drops/ml	Sterile	Packing
28	PLAC4320X1701A	155	6.5	-	-	10x500pcs/dispenser box/carton
	PLAC4320X1702A	155	6.5	-	E.O	Individual flow-pack, 10x100pcs/dispenser box /carton
	PLAC4320X1703A	155	6.5	-	E.O	Individual peel-pack, 10x100pcs/dispenser box/carton
	PLAC4320X1704A	155	6.5	-	E.O	5pcs/flow pack, 10x400pcs/dispenser box /carton
	PLAC4320X1705A	155	6.5	-	E.O	20pcs/polybag, 10x400pcs/dispenser box/carton
	PLAC4320X1706A	155	6.5	-	E.O	5pcs/peel pack, 10x400pcs/dispenser box /carton
29	PLAC4320X1001A	156	7.5	20	-	10x500pcs/dispenser box /carton
	PLAC4320X1002A	156	7.5	20	E.O	Individual flow-pack, 10x100pcs/dispenser box/carton
	PLAC4320X1003A	156	7.5	20	E.O	Individual peel-pack, 10x100pcs/dispenser box /carton
	PLAC4320X1004A	156	7.5	20	E.O	5pcs/flow pack, 10x400pcs/dispenser box /carton
	PLAC4320X1005A	156	7.5	20	E.O	20pcs/polybag, 10x400pcs/dispenser box/carton
	PLAC4320X1006A	156	7.5	20	E.O	5pcs/peel pack, 10x400pcs/dispenser box/carton
30	PLAC4320X1101A	152	8	20	-	10x500pcs/dispenser box /carton
	PLAC4320X1102A	152	8	20	E.O	Individual flow-pack, 10x100pcs/dispenser box/carton
	PLAC4320X1103A	152	8	20	E.O	Individual peel-pack, 10x100pcs/dispenser box/carton
	PLAC4320X1104A	152	8	20	E.O	5pcs/flow pack, 10x400pcs/dispenser box /carton
	PLAC4320X1105A	152	8	20	E.O	20pcs/polybag, 10x400pcs/dispenser box /carton
	PLAC4320X1106A	152	8	20	E.O	5pcs/peel pack, 10x400pcs/dispenser box/carton
31	PLAC4320X2301A	147	8.7	45	-	400pcs/dispenser box, 10x400pcs/carton
	PLAC4320X2302A	147	8.7	45	E.O	Individual Flow-Pack, 100pcs/dispenser box, 10x100pcs/carton
	PLAC4320X2303A	147	8.7	45	E.O	Individual peel-pack,100pcs/dispenser box, 10x100pcs/carton
	PLAC4320X2304A	147	8.7	45	E.O	5pcs/flow pack, 200pcs/dispenser box, 10x200pcs/carton
	PLAC4320X2305A	147	8.7	45	E.O	20pcs/polybag, 200pcs/dispenser box, 10x200pcs/carton
	PLAC4320X2306A	147	8.7	45	E.O	5pcs/peel pack, 400pcs/dispenser box, 10x400pcs/carton
32	PLAC4320X1501A	137	9	-	-	10x500pcs/dispenser box /carton
	PLAC4320X1502A	137	9	-	E.O	Individual flow-pack, 10x100pcs/dispenser box /carton
	PLAC4320X1503A	137	9	-	E.O	Individual peel-pack, 10x100pcs/dispenser box/carton
	PLAC4320X1504A	137	9	-	E.O	5pcs/flow pack, 10x400pcs/dispenser box /carton
	PLAC4320X1505A	137	9	-	E.O	20pcs/polybag, 10x400pcs/dispenser box/carton
	PLAC4320X1506A	137	9	-	E.O	5pcs/peel pack, 10x400pcs/dispenser box /carton
33	PLAC4320X1601A	155	15	19	-	10x500pcs/dispenser box /carton
	PLAC4320X1602A	155	15	19	E.O	Individual flow-pack, 10x100pcs/dispenser box /carton
	PLAC4320X1603A	155	15	19	E.O	Individual peel-pack, 200pcs/dispenser box, 10x200pcs/carton
	PLAC4320X1604A	155	15	19	E.O	5pcs/flow pack, 200pcs/dispenser box, 10x200pcs/carton
	PLAC4320X1605A	155	15	19	E.O	20pcs/polybag, 200pcs/dispenser box, 10x200pcs/carton
34	PLAC4320X1901A	300	23	-	-	100pcs/polybag, 10x100pcs/carton
	PLAC4320X1902A	300	23	-	E.O	Individual pack, 1pc/polybag, 600pcs/carton
	PLAC4320X1904A	300	23	-	E.O	5pcs/flow pack, 800pcs/carton
	PLAC4320X1905A	300	23	-	E.O	20pcs/polybag, 40x20pcs/carton
35	PLAC4320X3201A	165			-	10x100pcs/dispenser box /carton





## Collection Plates

GVS Collection Plates are molded from high-purity polypropylene (PP), which is highly stable. The outstanding properties are excellent solvent resistance (including DMSO, ethanol and isopropanol), thermally resistance and low residual. The collection plates are international ANSI/ SBS standards-compliant design with alphabetical marks.



### Features

- Withstand high speed centrifugal force 3000-4000 g
- Tolerant to autoclave at 121 °C for 20 min
- 4.6/3.5/2.2/2.0/1.6/1.0 mL deep well plates and 0.4/0.36 mL microplates are available

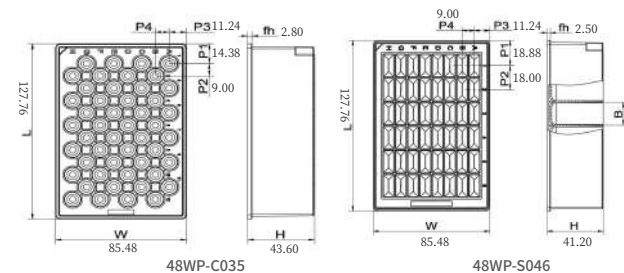
### Ordering information

Product Code	Description	Qty.
COLPLB96W020NA	96-Well Collection Plate, Round Well, 2.0 mL, U-bottom	24 Pcs/Box
COLPLB96W010A	96-Well Collection Plate, Round Well, 1.0 mL, U-bottom	24 Pcs/Box
COLPLB96W004A	96-Well Collection Plate, Round Well, 0.4 mL, U-bottom	10 Pcs/Box
COLPLB96W0036VA	96-Well Collection Plate, Round Well, 0.36 mL, V-bottom	10 Pcs/Box

Product Code	Description	Qty.
COLPLB48W046A	48-Well Collection Plate, Square Well, 4.6 mL, U-bottom	24 Pcs/Box
COLPLB96W022BNA	96-Well Collection Plate, Square Well, 2.2 mL, U-bottom	24 Pcs/Box
COLPLB96W022VNA	96-Well Collection Plate, Square Well, 2.2 mL, V-bottom	24 Pcs/Box
COLPLB96W0161A	96-Well Collection Plate, Square Well, 1.6 mL, U-bottom	30 Pcs/Box
COLPLB96W010NA	96-Well Collection Plate, Square Well, 1.0 mL, U-bottom	30 Pcs/Box
COLPLB384W240VA	384-Well collection plate, Square Well, 0.24 mL	10 Pcs/Box
COLPLB24W070VNA	24-Well Collection Plates, 7mL, V bottom	24/Pack
COLPLB24W1001A	24-Well Collection Plates, 10mL, U bottom	50/Pack

Note: For sterilized collection plates, please contact us.

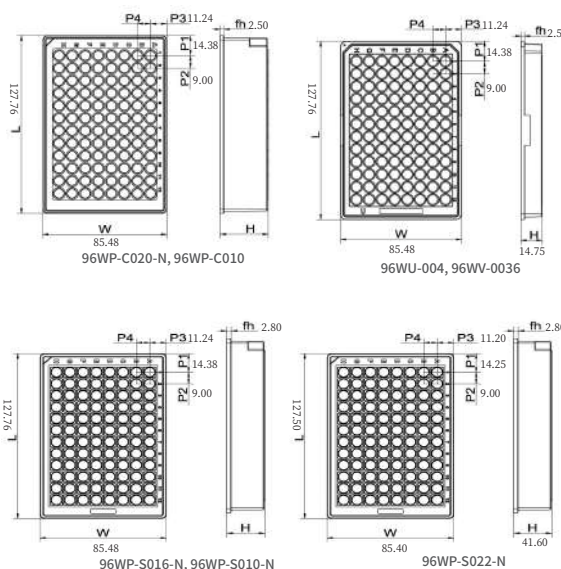
### ALL DIMENSIONS IN MM



Note:

1. The length and width of round well plate of 96WP-C020-N and 96WP-C010 are the same, but the well height is 43.90 mm and 33.00 mm.

2. The length and width of square well plate of 96WP-S016-BN and 96WP-S010-N are the same, but the well height is 31.60 mm and 24.40 mm.





## Silicone Sealing Mats



### Ordering information

Product Code	Description	Qty.
COLPLSEALB96W20A	96-Well Round Capped Silicone Sealing Mats, for Sealing 96- Well Collection Plates (2.0 mL), Pierceable	10 Pcs/PK
COLPLSEALB96W10A	96-Well Round Capped Silicone Sealing Mats, for Sealing 96- Well Collection Plates (1.0/0.4/0.36 mL), Pierceable	10 Pcs/PK
COLPLSEALB96WSA	96-Well Square Capped Silicone Sealing Mats, for Sealing 96- Well Collection Plates (2.2/1.6/1.0 mL)	10 Pcs/PK
COLPLSEALB96WPA	96-Well Square Capped Silicone Sealing Mats, for Sealing 96- Well Collection Plates (2.2/1.6/1.0 mL), Pierceable	10 Pcs/PK
COLPLSEALB96WA	Adhesive Sealing Films, for Sealing Deep Well Plates	500 Pcs/PK

## Reagent Reservoirs



GVS Reagent Reservoirs are available in 8-channel, 12-channel, 96-channel and 384-channel, free of DNase and RNase.

### Ordering Information

Product Code	Description	Qty.
COLPLRB08C022WRA	8-Channel Reagent Reservoirs, 22 mL	10 Pcs/Box
COLPLRB12C015WRA	12-Channel Reagent Reservoirs, 15 mL	10 Pcs/Box
COLPLRB96C195WRA	96-Channel Reagent Reservoirs, 195mL	10 Pcs/Box

## Sterile Sample Bags

**Meet all your collection, storage and transport needs, ensuring the sterility and integrity of your samples for testing**

GVS sterile sampling bags are the ideal choice for collecting, storing, and transporting solid, semi-solid and liquid samples. This product is made from FDA-approved pure polyethylene material, with an average thickness greater than similar products on the market, ensuring higher strength and durability.

GVS sterile sampling bags are produced using extruded polyethylene film tubes, eliminating the need for heat sealing on the sides, with only a tear-off seal at the top and a heat-sealed bottom, thus removing potential hazards associated with side heat sealing. Additionally, the absence of side heat sealing allows users to easily open the bag, facilitating the insertion of various samples.

### Sterility assured

GVS sterile sampling bags are produced using extruded polyethylene film tubes with a temperature range of 220°C to 240°C ensuring that the interior of the finished product reaches a sterile state. Throughout the production process, these bags remain in a closed environment, preventing exposure to the outside, which further guarantees sterility until the moment the user opens the packaging.

To ensure product sterility, we conduct batch sampling

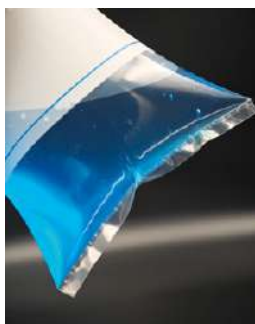


of all raw materials and perform independent testing, including assessments for aerobic and anaerobic bacteria, as well as various colony culture experiments. Only after confirming that the raw materials have undergone comprehensive sterility testing do we proceed to the processing stage. The finished products also undergo multiple stringent sterility testing procedures to ensure the quality and safety of the final product.

## More advantages

- **Easy Tear Design** Utilizes an easy tear structure for quick opening, ensuring user-friendly operation.
- **Secure Bottom Seal** The bottom is sealed using a thermal sealing process to guarantee reliable closure and prevent leakage of contents.
- **Small Handle Design** Allows for quick opening while maintaining the maximum opening angle for easy sample insertion.

- **Diverse Options** Offers various sizes and sealing solutions to accommodate different sampling needs
- **Transparent and Marking Options** Available in transparent bags or versions with writable labels for easy sample observation and information recording.



## Product Application

- Laboratory
- Medical industry
- Environment detection
- Evidence collection
- Food industry
- Agriculture
- Livestock farming
- Daily chemical industry

Aseptic sampling bags are specialized tools designed for the collection, storage, and transportation of biological samples. They are widely used in various fields, including laboratories, healthcare, food, daily chemicals, agriculture, environmental monitoring, and industry. Their main features include excellent sterility and sealing properties, ensuring that cross-contamination and sample degradation are avoided during the collection and transfer process.

### Ordering information

Product Number	Size(mm)	material(μm)	capacity(ml/oz)	packaging
<b>Closed with 2 round wires, transparent, without writing area.</b>			round wire _____ round wire _____	
SBL127076RR70TA	127x76	PE70	60(2)	Cs/1000(2X500)
SBL178076RR70TA	178 x76	PE70	118(4)	Cs/1000(2x500)
SBL190114RR70TA	190x114	PE70	350(12)	Cs/1000(2X500)
SBL229114RR70TA	229x114	PE70	530(18)	Cs/1000(2X500)
SBL304114RR70TA	304x114	PE70	800(27)	Cs/1000(2X500)
SBL381114RR70TA	381 x114	PE70	1050(36)	Cs/1000(2X500)
SBL229140RR90TA	229x140	PE90	710(24)	Cs/1000(2X500)
SBL381140RR90TA	381 x140	PE90	1250(42)	Cs/1000(2x500)
SBL300180RR100TA	300x180	PE100	1650(55)	Cs/1000(4X250)
<b>Closed with 2 round wires, with writing area.</b>			round wire _____ round wire _____	
SBL127076RR70WA	127x76	PE70	60(2)	Cs/1000(2X500)
SBL178076RR70WA	178x76	PE70	118(4)	Cs/1000(2X500)
SBL190114RR70WA	190x114	PE70	350(12)	Cs/1000(2x500)
SBL229114RR70WA	229x114	PE70	530(18)	Cs/1000(2x500)
SBL304114RR70WA	304x114	PE70	800(27)	Cs/1000(2x500)
SBL381114RR70WA	381 x114	PE70	1050(36)	Cs/1000(2X500)
SBL229140RR90WA	229x140	PE90	710(24)	Cs/1000(2X500)
SBL381140RR90WA	381 x140	PE90	1250(42)	Cs/1000(2X500)
SBL300180RR100WA	300x180	PE100	1650(55)	Cs/1000(4X250)
<b>Closed with 1 round &amp; 1 flat wire, with writing area</b>			round wire _____ flat wire _____	
SBL229114RF70WA	229x114	PE70	530(18)	Cs/1000(2X500)
SBL229140RF90WA	229x140	PE90	710(24)	Cs/1000(2X500)
SBL300180RF100WA	300x180	PE100	1650(55)	Cs/1000(4X250)
SBL254254RF100WA	254x254	PE100	1780(60)	Cs/1000(4X250)
SBL356254RF100WA	356x254	PE100	3000(100)	Cs/1000(4X250)

## Ordering information

Product Number	Size(mm)	material(μm)	capacity(ml/oz)	packaging
Closed with 1 round & 1 flat wire, transparent, without writing area.			round wire flat wire	
SBL229114RF70TA	229x114	PE70	530(18)	Cs/1000(2X500)
SBL304114RF70TA	304x114	PE70	800(27)	Cs/1000(2X500)
SBL381114RF70TA	381 x114	PE70	1050(36)	Cs/1000(2X500)
SBL229140RF90TA	229x140	PE90	710(24)	Cs/1000(2X500)
SBL381140RF90TA	381x140	PE90	1250(42)	Cs/1000(2X500)
SBL300180RF100TA	300x180	PE100	1650(55)	Cs/1000(4X250)
SBL254254RF100TA	254x254	PE100	1780(60)	Cs/1000(4X250)
SBL305254RF100TA	305x254	PE100	2250(75)	Cs/1000(4X250)
SBL356254RF100TA	356x254	PE100	3000(100)	Cs/1000(4X250)
SBL381254RF100TA	381 x254	PE100	3800(130)	Cs/500(2X250)
SBL406305RF100TA	405x305	PE100	5000(170)	Cs/500(5X100)
SBL457305RF100TA	457x305	PE100	6000(200)	Cs/500(5X100)
SBL508305RF100TA	508x305	PE100	6800(230)	Cs/500(5X100)
SBL508381RF100TA	508x381	PE100	9800(330)	Cs/200(2X100)
SBL610381RF100TA	610x381	PE100	13000(440)	Cs/200(2X100)

## GVS can also meet customers' personalized needs in specific applications

- **Customized sizes and specifications:** Customers can specify the size, thickness of the bags to suit specific uses.
- **Material selection:** Options for different materials, such as polyethylene and nylon, are available to meet requirements for breathability and chemical resistance.
- **Printing logos and designs:** Company logos and relevant information can be printed on sterile sampling bags to enhance brand image and recognition.
- **Compliance with standards:** Customized products will comply with industry standards, ensuring the sterility of materials and production processes.
- **Personalized service:** Consulting and sample confirmation services are provided to ensure the final product meets usage requirements.

## Full-page filter Sterile Sample Bags



### Features

- The outer layer is a reinforced multi-layer composite film
- The middle layer is a full-width filter membrane made of pure polyethylene
- Filter membrane pore size: less than 280 microns.
- Can be used with homogenizers
- Sampling, homogenization, and filtration completed in one step.

## Full-page filter Sterile Sample Bags Ordering information

Product Number	Size(mm)	material(μm)	capacity(ml/oz)	Print	packaging
Closed with 2 round wires, transparent, without writing area.			round wire	_____	
			round wire	_____	
SBLM230150RR100TA	230x150	NY/PE100	700(24)	NO	Cs/1000(2X500)
SBLM300190RR100TA	300x190	NY/PE100	1600(55)	NO	Cs/1000(4X250)
SBLM380190RR100TA	380x190	NY/PE100	2000(69)	NO	Cs/1000(2X250)
SBLM380380RF100TA	380x380	NY/PE100	4000(138)	NO	Cs/1000(5X100)

## Stand-up Sterile Sample Bags



### Features

- Outer layer reinforced multi-layer composite membrane, offering superior durability and protection performance.
- Stand-up design, making sample collection more efficient.
- K-shaped bottom seal, enhancing standing support and ensuring safety during sampling and storage.
- Facilitates better fluid sampling, resulting in smoother operation.
- Writable label area for records, convenient for subsequent data management and tracking.

## Ordering information

Product Number	Size(mm)	material(μm)	capacity(ml/oz)	Print	packaging
Closed with 2 round wires, transparent, without writing area.			round wire	_____	
			round wire	_____	
SBLU185075RR75TA	185x75	NY/PE75	120(4)	NO	Cs/1000 (2x500)
SBLU185095RR75TA	185x95	NY/PE75	207(7)	NO	Cs/1000 (2x500)
SBLU230115RR75TA	230x115	NY/PE75	530(18)	NO	Cs/1000 (2x500)
SBLU230150RR90TA	230x150	NY/PE90	700(24)	NO	Cs/1000(2X500)
SBLU255160RR90TA	255x160	NY/PE90	1050(36)	NO	Cs/1000(4X250)
SBLU300190RR100TA	300x190	NY/PE100	1600(55)	NO	Cs/1000(4X250)
SBLU380150RR100TA	380x150	NY/PE90	1200(42)	NO	Cs/1000(4X250)
SBLU380190RR100TA	380x190	NY/PE100	2000(69)	NO	Cs/500(2X250)
SBLU380380RF100TA	380x380	NY/PE100	4000(138)	NO	Cs/500 (2x250)
Closed with 2 round wires, transparent, with writing area.			round wire	_____	
			round wire	_____	
SBLU185075RR75WA	185x75	NY/PE75	120(4)	Yes	Cs/1000 (2x500)
SBLU185095RR75WA	185x95	NY/PE75	207(7)	Yes	Cs/1000 (2x500)
SBLU230115RR75WA	230x115	NY/PE75	530(18)	Yes	Cs/1000 (2x500)
SBLU230150RR90WA	230x150	NY/PE90	700(24)	Yes	Cs/1000(2X500)
SBLU255160RR90WA	255x160	NY/PE90	1050(36)	Yes	Cs/1000(4X250)
SBLU300190RR100WA	300x190	NY/PE100	1600(55)	Yes	Cs/1000(4X250)
SBLU380150RR100WA	380x150	NY/PE90	1200(42)	Yes	Cs/1000(4X250)
SBLU380190RR100WA	380x190	NY/PE100	2000(69)	Yes	Cs/500(2X250)
SBLU380380RF100WA	380x380	NY/PE100	4000(138)	Yes	Cs/500 (2x250)



## Blender Bags

Suitable for almost all homogenizers available on the market



### Features

- **Aseptic Design**

Subjected to strict aseptic processing to ensure no contamination occurs during sample collection and handling.

- **Transparent Structure**

Typically made from transparent materials, facilitating observation of sample status and monitoring the degree of homogenization.

- **Vacuum Packaging**

Utilizes vacuum packaging to extend shelf life, ensuring the stability and effectiveness of samples.

- **Durable Materials**

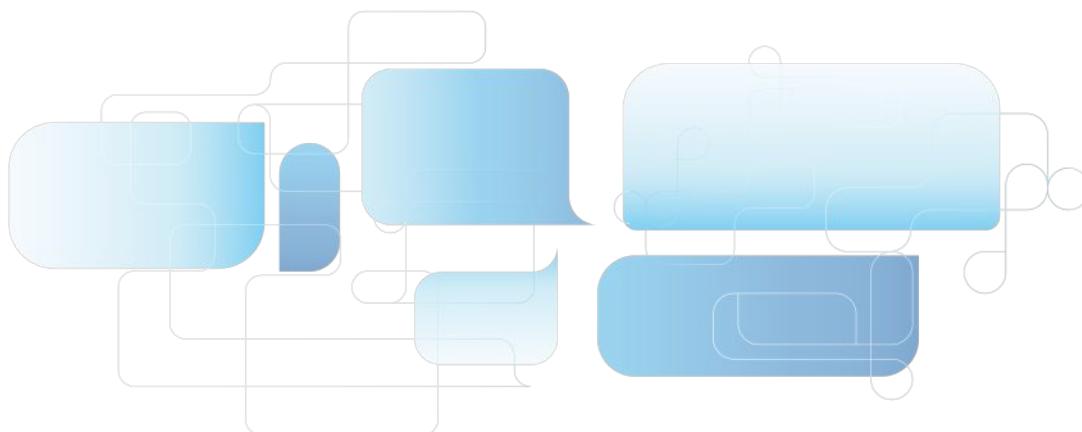
Made from high-toughness and pressure-resistant materials, capable of withstanding the impact and pressure during the homogenization process.

- **Filtration Function**

Offers multiple filtration models to reject impurities, making detection simpler.

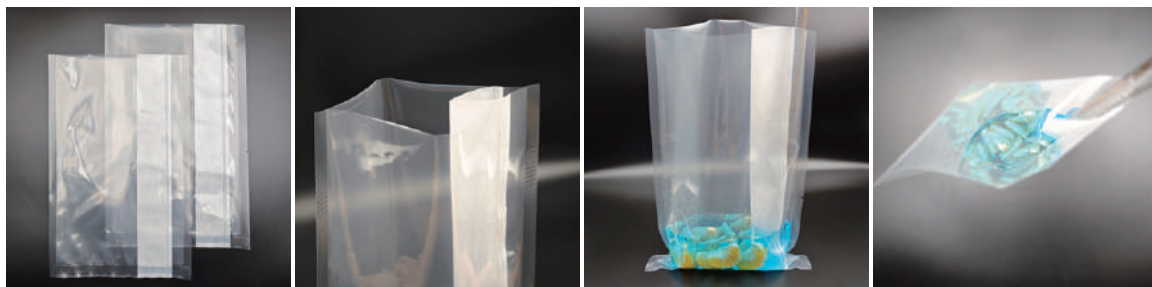
- **Specific Capacities**

Available in various capacities options to meet different experimental and processing needs.



## Blender Bags

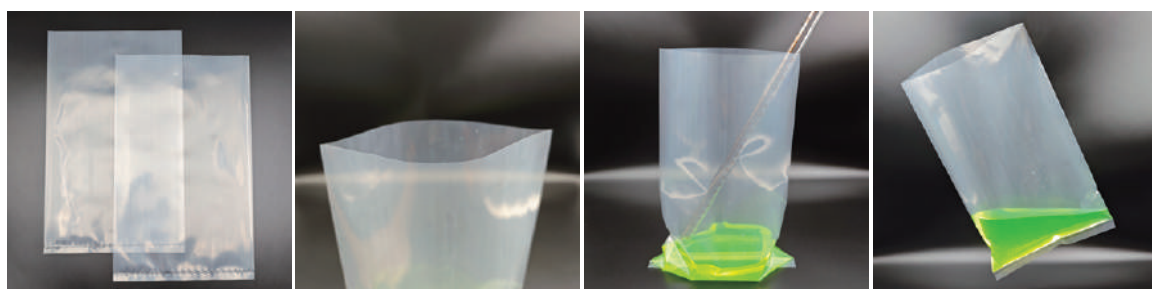
### Lateral filter Blender bags



### Full-page filter Blender bags



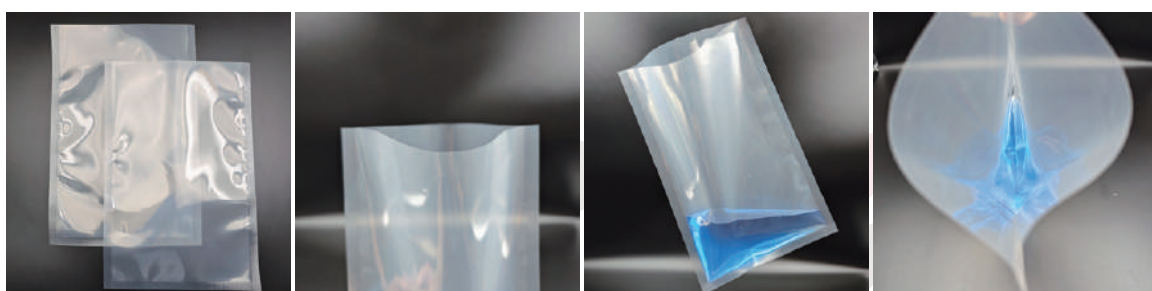
### Non-filter Blender bags



### Full-page filter Blender bags



### Reinforced Blender bags



## Blender Bags

Product Number	Size(mm)	material(μm)	capacity(ml/oz)	Print	packaging
Lateral filter Blender bags (non woven fabric filter)					
BBLFTN30019075TA	300x190	NY/PE75	400	NO	Cs/500(10X50)
BBLFTN30019075WA	300x190	NY/PE75	400	YES	Cs/500(10X50)
Full-page filter Blender bags (non woven fabric filter)					
Non-filter Blender bags					
BBLT30018070TA	300x180	PE70	400	NO	Cs/1000(10X100)
BBLT300180100TA	300x180	PE100	400	NO	Cs/500(100X5)
BBLT300180100WA	300x180	PE100	400	YES	Cs/500(100X5)
BBLT300180120TA	300x180	PE120	400	NO	Cs/500(100X5)
BBLT320175110TA	320x175	PE110	400	NO	Cs/1000(4X250)
BBLT380254100TA	380x254	PE100	2000	NO	Cs/500(10X50)
BBLT500380110TA	500x380	PE110	3200	NO	Cs/400(2X200)
BBLT560380110TA	560x380	PE110	3750	NO	Cs/400(12x200)
Full-page filter Blender bags (PE filter membrane)					
BBLFMP30019075WA	300x190	NY/PE75	400	YES	Cs/500(10X50)
On demand	600x380	NY/PE75	3750	NO	Cs/100(10X10)
Reinforced Blender bags					
BBLS30019075TA	300x190	NY/PE75	400	NO	Cs/500(10x50)
BBLS30019075WA	300x190	NY/PE75	400	YES	Cs/500(10X50)

## Single Zipper Standing Sterile Sampling Bag/Homogenizer Bag



### Features

- **Sterile Design:** Each sampling bag undergoes strict sterilization to ensure a microbe-free sampling process.
- **Sealable Structure with Pressure Strip;** The pressure strip design ensures a secure seal, preventing sample leakage and guaranteeing safe transportation.
- **Upright Design:** The upright structure is stable, making it convenient for sampling, mixing, and weighing, thus enhancing laboratory efficiency.
- **Excellent Homogenization Performance,** Ample space ensures thorough mixing of samples, making it suitable for various types of samples.
- **Wide Applicability:** Suitable for multiple fields, including food, beverages, biotechnology and environmental monitoring.



## Single Zipper Standing Sterile Sampling Bag/Homogenizer Bag

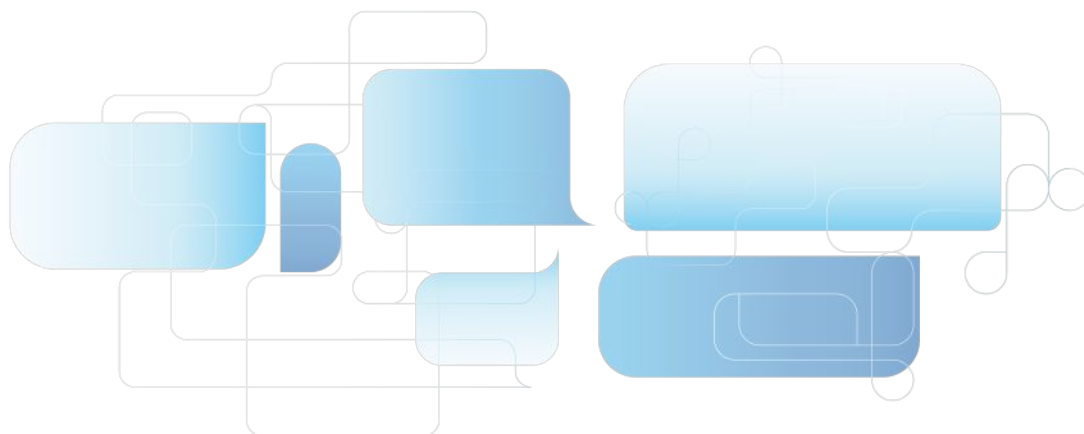
Product Number	Size(mm)	material(μm)	capacity(ml/oz)	packaging
SBLZSU2022WA	220×200	NYPE95	400	Cs/1000 (10×100)
SBLZSU2027WA	270×200	NYPE95	2000	Cs/1000 (10×100)
SBLZSU2032WA	320×200	NYPE95	3750	Cs/1000 (10×100)
SBLZSU2532WA	320×250	NYPE95	400	Cs/500 (10×50)
SBLZSU2540WA	400×250	NYPE95	400	Cs/500 (10×50)
SBLZSU3040WA	400×300	NYPE95	5500	Cs/500 (10×50)
SBLZSU3540WA	400×350	NYPE95	6500	Cs/500 (10×50)

## Double Zipper Leak-Proof Standing Sterile Sampling Bag/Homogenizer Bag



### Features

- Double seal leak prevention: Dual protection completely eliminates the risk of sample leakage
- Strict sterilization: Ensures that the risk of microbial contamination minimizes
- Easy operation: Vertical design facilitates sampling, mixing, and weighing
- Excellent homogenization: Ample space ensures thorough mixing of samples
- Wide applicability; Suitable for various fields including food, beverages, and biotechnology.



## Custom Sterile Liquid Sample Bags

**1.**

Sterile liquid sampling bags are high-performance bags designed for the sterile collection transportation, and storage of liquid samples.

**2.**

Their upright structure and unique twist-cap design ensure the safety and convenience of the samples.

**3.**

The top is equipped with a twist-cap of optional diameter allowing customers to choose different sizes according to their needs to fit various sampling tools.

**4.**

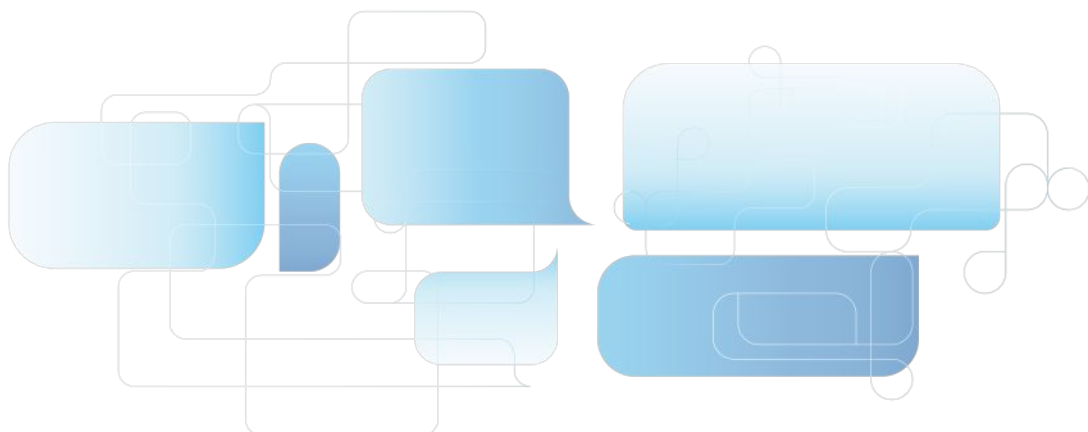
The bag body can be customized with personalized printing according to customer requirements, including company logos and product information, to enhance brand image.

**5.**

High-energy electron accelerator irradiation technology is used for sterilization, ensuring a reliable and long-lasting sterile state, effectively eliminating bacteria and microorganisms.

**6.**

This product is widely used in medical testing, environmental monitoring, the food industry, and other fields, making it an ideal choice for laboratory and on-site sampling.



## Other related custom products



Sterile sampling bags with dry sponge



Sterile sampling bags with compartments for capacity



High-temperature resistant sterilization bags



Cord blood and placenta cell storage bags



Autoclave bag



Sterile sampling bags with spoons



Outer packaging bags for petri dishes



Specimen bags



## WORLDWIDE

### EUROPE

**Italy Office**  
Headquarters  
GVS S.p.A.  
Via Roma 50  
40069 Zola Predosa (BO) - Italy  
Tel. +39 051 6176311  
gvs@gvs.com

**Russia**  
GVS Russia LLC.  
Profsoyuznaya Street, 25-A, office 102  
117418, Moscow  
Russian Federation (Russia)  
Tel. +7 495 0045077  
gvsrussia@gvs.com

**United Kingdom**  
GVS Filter Technology UK  
Vickers Industrial Estate  
Mellishaw Lane, Morecambe  
Lancashire LA3 3EN  
Tel. +44 (0) 1524 847600  
gvsuk@gvs.com

**Romania**  
GVS Microfiltrazione srl  
Sat Ciorani de Sus 1E - Comuna Ciorani  
Prahova România  
Tel. (+40) 244 463044  
gvsro@gvs.com

**Turkey**  
GVS Türkiye  
Nidakule Merdivenköy Mahallesi  
Bora Sokak No:1 Kat:7 - 34732 Istanbul  
Tel. +90 216 504 47 67  
gvsTurkey@gvs.com

### PRODUCT COLLECTION - Labware

Copyright © 2025 GVS ® S.p.A.  
All Right Reserved - Printed in Italy  
Printing History: Version 03032025

### ASIA

**China**  
GVS Technology (Suzhou) Co., Ltd.  
Fengqiao Civil-Run Sci-Tech Park,  
602 Changjiang Road, S.N.D.  
Suzhou, China 215129  
Tel. +86 512 6661 9880  
gvschina@gvs.com

**GVS YIBO Medical Devices Co. Ltd.**  
17, Zhongshan East - Yuyao city,  
315403 Zhejiang Province, China  
Tel. +86 574 6257 5697

**Japan**  
GVS Japan K.K.  
KKD Building 4F, 7-10-12 Nishishinjuku  
Shinjuku-ku, Tokyo 160-0023 Japan  
Tel. +81 3 5937 1447  
gvsjapan@gvs.com

**Korea**  
GVS Korea Ltd  
#315 Bricks Tower  
368 Gyungchun-ro(Gaun-dong),  
Namyangju-si, Gyunggi-do,  
Tel: +82 31 563 9873  
gvsKorea@gvs.com

**India**  
GVS Filter India Pvt Ltd  
Unit No 35 & 36 on First Floor  
Ratna Jyot Industrial Premises Irla Lane,  
Irla Vile Parle, Mumbai 400056, India  
gvsindia@gvs.com

**Malaysia**  
GVS Filtration Sdn.Bhd  
Lot No 10F-2B, 10th Floor, Tower 5 @ PFCC  
Jalan Puteri 1/2, Bandar Puteri  
47100 Puchong, Selangor, Malaysia  
Tel: +60 3 7800 0062  
gvsMalaysia@gvs.com

**Thailand**  
GVS Thailand  
88 Ratchadaphisek Rd,  
Office 10E03 - Khlong Toei,  
Bangkok 10110  
gvsThailand@gvs.com

### AMERICA

**U.S.A.**  
GVS North America  
63 Community Drive  
Sanford, ME 04073 - USA  
Tel. +1 866 7361250  
gvsusa@gvs.com

**GVS Filtration Inc.**  
2150 Industrial Drive  
Findlay, OH. 45840 - USA  
Tel. +1.419.423.9040  
gvsfiltration@gvs.com

2200 W 20th Avenue  
Bloomer, WI 54724 - USA  
Tel. +1.715.568.5944  
gvsfiltration@gvs.com

**Puerto Rico**  
GVS Puerto Rico, LLC  
98 Carr 194 - Fajardo,  
Puerto Rico, 00738-2988, USA  
Tel. +1.787.355.4100  
gvspuertorico@gvs.com

**México**  
GVS Filter Technology de Mexico  
Universal No. 550, Vynmsa Aeropuerto Apodaca  
Industrial Park, Ciudad Apodaca, Nuevo León, C.P.  
66626 - México  
Tel. +52 81 2282 9003  
gvsMex@gvs.com

**Argentina**  
GVS Argentina S.A.  
Avenida Rivadavia 13.332  
1704 Ramos Mejia,  
Buenos Aires - Argentina  
Tel. + 5411 48614750  
lifesciences.ar@gvs.com

**Brazil**  
GVS do Brasil Ltda.  
Rodovia Conego Cyriaco Scaranello Pires 251  
Jardim Chapadão, CEP 13193-580  
Monte Mor (SP) - Brasil  
Tel. +55 19 38797200  
gvs@gvs.com.br